

# Additional papers 1



## Executive Committee

Wed 15 Dec  
2021  
6.30 pm

Council Chamber  
Town Hall  
Redditch

**REDDITCH** BOROUGH COUNCIL

*making  
a  
difference*

[www.redditchbc.gov.uk](http://www.redditchbc.gov.uk)

**If you have any queries on this Agenda please contact  
Jess Bayley-Hill**

**Town Hall, Walter Stranz Square, Redditch, B98 8AH**

**Tel: (01527) 64252 (Ext. 3072)**

**e.mail: [jess.bayley-hill@bromsgroveandredditch.gov.uk](mailto:jess.bayley-hill@bromsgroveandredditch.gov.uk)**



# Executive

**Wednesday, 15th December,  
2021**

**6.30 pm**

**Council Chamber Town Hall**

## Agenda

### Membership:

Cllrs:

Matthew Dormer  
(Chair)  
Gemma Monaco  
(Vice-Chair)  
Joanne Beecham  
Aled Evans  
Peter Fleming

Anthony Lovell  
Nyear Nazir  
Mike Rouse  
Craig Warhurst

## 6. New Cemetery Provision (Pages 1 - 20)

This report will be pre-scrutinised at a meeting of the Overview and Scrutiny Committee due to take place on Monday, 13<sup>th</sup> December 2021. Any recommendations arising from this meeting of the Overview and Scrutiny Committee on the subject of this report will be reported for the Executive Committee's consideration in a supplementary agenda pack.

A copy of the presentation that is due to be delivered at the meeting for this item has been attached to this supplementary pack.

This page is intentionally left blank

# New Cemetery Provision

Mike Birkinshaw AICCM

Bereavement Services Manager & Registrar

# Introduction

- Background inc Cemetery Design
- Burial Options
  - No future provision
  - Reuse Plymouth Road Cemetery
  - Land off Ipsley Church Lane
  - Bordesley Abbey Extension
- Summary

# Background

- Redditch BC operate three cemeteries & four closed church yards
- Plymouth Road Cemetery opened in 1855 & is now closed to new burial space
- Edgioake Lane Cemetery opened in 1885 & has five years of provision remaining
- Abbey Cemetery opened in 1937 & has approximately six months provision remaining

# Background

- Options for new burial provision have been discussed since 2010
- Brooklands Lane site originally investigated
- Further twenty-five sites investigated from 2014 onwards



# Background

- 16 Sites assessed and discounted
- 5 Sites assessed, further investigated and discounted
- 4 Sites assessed, further investigated but not recommended
- 1 Site assessed, further investigated and recommended

# Designs of Cemeteries



60

ON LAYING OUT CEMETERIES.

terrace, or in the reserved gardens, till the beds and borders are nearly full, nor to bury in the paths and roads, till the cemetery is about to be closed as such for ever, we shall take the number of spaces for graves immediately available as 1200. In order that these may return a suitable interest for the money expended, it is evident that more than one interment must be made in each grave, whether the grave be a private or family grave, or a common grave. Every common grave we shall suppose to be 24 ft. deep, which will give four interments, allowing 6 ft. of soil over each. The family graves may either be made in the free soil, or they may be brick graves or vaults, and they may be made of any depth the proprietors may choose. The family graves made in the free soil we shall suppose to be of the same depth and capacity as the common graves; and the brick graves may either be of the same depth and capacity, or, by embedding the coffins in cement, or hermetically sealing each with a flag-stone, the capacity of each grave may be at least doubled. Hence the 1200 graves may give at least 4800, or say 5000, interments; but, as the space allowed for each grave along the borders is more than double that allowed in the interior beds, 1000 interments at least may be added. Whether or not 5000 or 6000 interments will afford a sufficient return for the capital expended, and the necessary annual expense, will depend on the sum charged for each interment, and the number of interments made in a year.

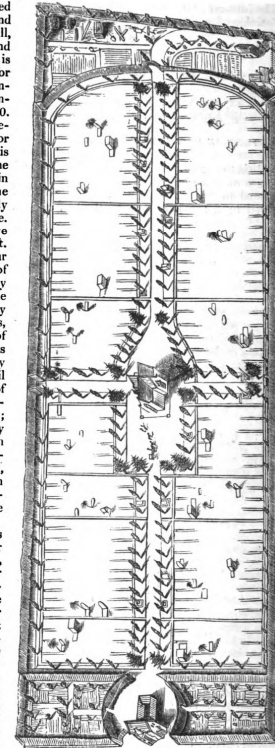


Fig. 40. Isometrical View of the Cambridge Cemetery

Digitized by Google

Original from HARVARD UNIVERSITY

# Designs of Cemeteries



# **Provide no new burial provision**

(Location Plan 1)

- No Statutory obligation to provide burial provision
- Possible two tier bereavement service
- Private provider may consider operating in Borough
- Alternative provision outside Borough

# **Provide no new burial provision**

(Location Plan 1)

- Conflict with Local Plan (4)
- 60% of bereaved families affected
- Limited savings on existing resources

# Reuse Plymouth Road Cemetery

(Location Plan 2)

- Private Bill in Parliament required
- New Southgate Cemetery Bill
- Possible to produce 10 years provision
- More details of times scales and process in Background Paper 1

# Reuse Plymouth Road Cemetery

(Location Plan 2)

- Time to implementation
- Compensation / Objections
- Conflict with Local Plan (4)
- Costs
- Bishops Faculty required to extend site

# Land off Ipsley Church Lane

(Location Plan 3)

- Change of use planning consent gained
- Conditions secure biodiversity and ecology elements
- No conflict with Local Plan (4)



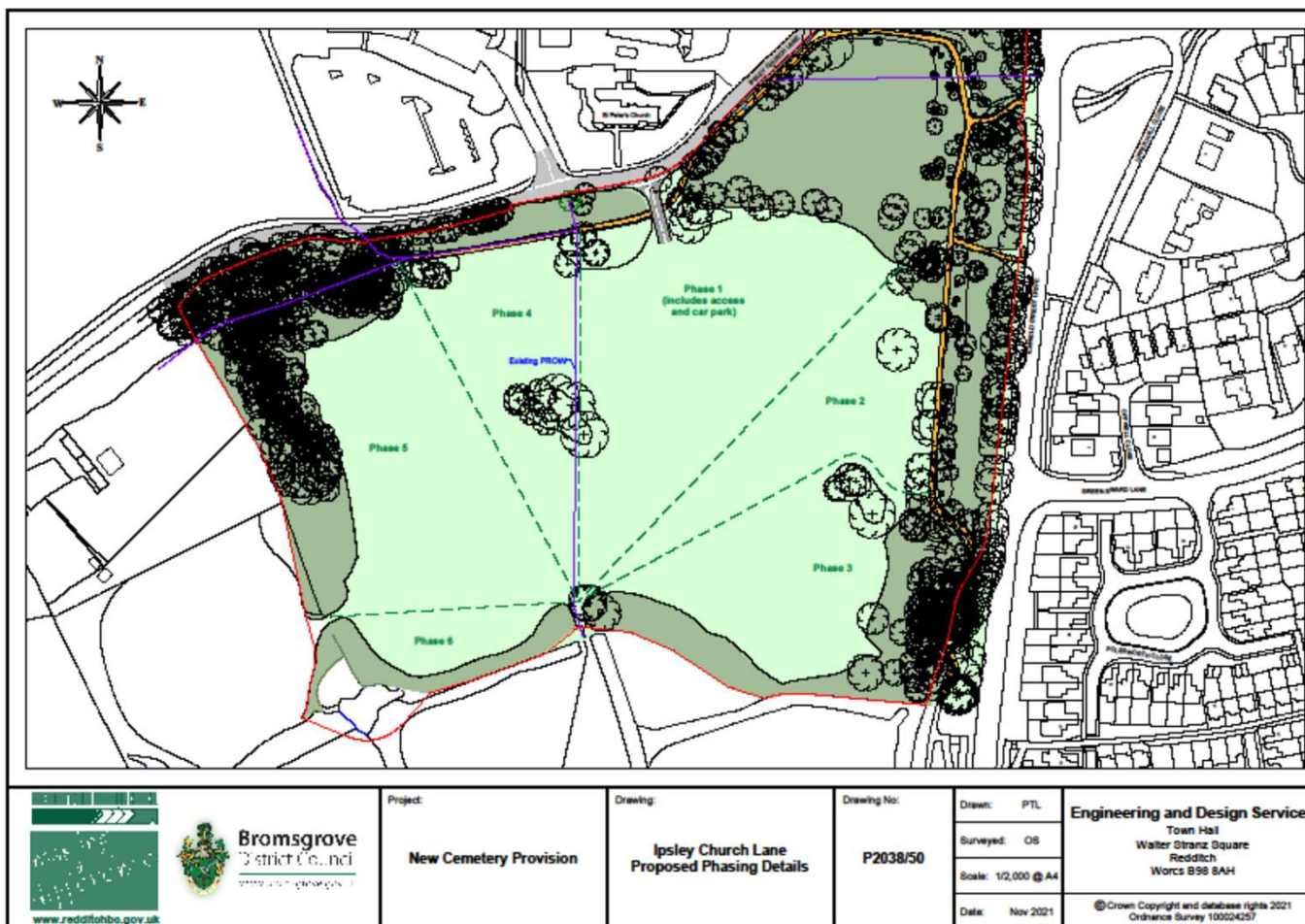
# Land off Ipsley Church Lane

(Location Plan 3)

- Shortest Time to implementation
- Costs
- Creates provision for multi generations of Residents

# Land off Ipsley Church Lane

(Location Plan 3)



# Land off Ipsley Church Lane

(Location Plan 3)

## Redditch Cemetery: Conceptual design



An artists impression of how the cemetery could look



# **Bordesley Abbey Extension**

(Location Plan 4)

- Multiple sites suggested
- No additional testing carried out
- Site to east of Abbey Cemetery is Scheduled Ancient Monument
- Limited provision

# **Bordesley Abbey Extension**

(Location Plan 4)

- Conflict with Local Plan (4)
- Archaeological concerns
- Time to implement

# Summary

- Continue to offer new burial provision
- Use land off Ipsley Church Lane
- Provision a sum of £320,000 for works

# Summary

- Lowest initial set up cost
- Lowest cost to develop
- Shortest time to implement
- Least time without new provision

# New Cemetery Provision

Mike Birkinshaw AICCM

Bereavement Services Manager & Registrar