

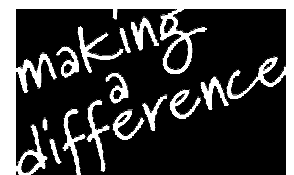


Crime and Disorder Scrutiny Panel

Tuesday, 22nd October,
2013

6.00 pm

Committee Room Two
Town Hall
Redditch



www.redditchbc.gov.uk

Access to Information - Your Rights

The Local Government (Access to Information) Act 1985 widened the rights of press and public to attend Local Authority meetings and to see certain documents. Recently the Freedom of Information Act 2000, has further broadened these rights, and limited exemptions under the 1985 Act.

Your main rights are set out below:-

- Automatic right to attend all Council and Committee meetings unless the business would disclose confidential or “exempt” information.
- Automatic right to inspect agenda and public reports at least five days before the date of the meeting.
- Automatic right to inspect minutes of the Council and its Committees (or summaries of business undertaken in private) for up to six years following a meeting.
- Automatic right to inspect lists of background papers used in the preparation of public reports.
- Access, upon request, to the background papers on which reports are based for a period of up to four years from the date of the meeting.
- Access to a public register stating the names and addresses and electoral areas of all Councillors with details of the membership of all Committees etc.
- A reasonable number of copies of agenda and reports relating to items to be considered in public must be made available to the public attending meetings of the Council and its Committees etc.
- Access to a list specifying those powers which the Council has delegated to its Officers indicating also the titles of the Officers concerned.
- Access to a summary of the rights of the public to attend meetings of the Council and its Committees etc. and to inspect and copy documents.
- In addition, the public now has a right to be present when the Council determines “Key Decisions” unless the business would disclose confidential or “exempt” information.
- Unless otherwise stated, all items of business before the Executive Committee are Key Decisions.
- (Copies of Agenda Lists are published in advance of the meetings on the Council’s Website:
www.redditchbc.gov.uk

If you have any queries on this Agenda or any of the decisions taken or wish to exercise any of the above rights of access to information, please contact

**Jess Bayley and Michael Craggs
Democratic Services Officers**

**Town Hall, Walter Stranz Square, Redditch, B98 8AH
Tel: 01527 64252 (Ext. 3268 / 3267) Fax: (01527) 65216
email: jess.bayley@bromsgroveandredditch.gov.uk /
michael.craggs@bromsgroveandredditch.gov.uk**

Welcome to today's meeting.

Guidance for the Public

Agenda Papers

The **Agenda List** at the front of the Agenda summarises the issues to be discussed and is followed by the Officers' full supporting **Reports**.

Chair

The Chair is responsible for the proper conduct of the meeting. Generally to one side of the Chair is the Committee Support Officer who gives advice on the proper conduct of the meeting and ensures that the debate and the decisions are properly recorded. On the Chair's other side are the relevant Council Officers. The Councillors ("Members") of the Committee occupy the remaining seats around the table.

Running Order

Items will normally be taken in the order printed but, in particular circumstances, the Chair may agree to vary the order.

Refreshments : tea, coffee and water are normally available at meetings - please serve yourself.

Decisions

Decisions at the meeting will be taken by the **Councillors** who are the democratically elected representatives. They are advised by **Officers** who are paid professionals and do not have a vote.

Members of the Public

Members of the public may, by prior arrangement, speak at meetings of the Council or its Committees. Specific procedures exist for Appeals Hearings or for meetings involving Licence or Planning Applications. For further information on this point, please speak to the Committee Support Officer.

Special Arrangements

If you have any particular needs, please contact the Committee Support Officer.

Infra-red devices for the hearing impaired are available on request at the meeting. Other facilities may require prior arrangement.

Further Information

If you require any further information, please contact the Committee Support Officer (see foot of page opposite).

Fire/ Emergency instructions

If the alarm is sounded, please leave the building by the nearest available exit – these are clearly indicated within all the Committee Rooms.

If you discover a fire, inform a member of staff or operate the nearest alarm call point (wall mounted red rectangular box). In the event of the fire alarm sounding, leave the building immediately following the fire exit signs. Officers have been appointed with responsibility to ensure that all visitors are escorted from the building.

Do Not stop to collect personal belongings.

Do Not use lifts.

Do Not re-enter the building until told to do so.

The emergency Assembly Area is on Walter Stranz Square.

Crime and Disorder Scrutiny Panel

Tuesday, 22nd October, 2013

6.00 pm

Committee Room 2 Town Hall

Agenda

Membership:

Cllrs: Andrew Brazier Pattie Hill
 (Chair) Roger Hill
 Andrew Fry
 Adam Griffin

1. Apologies and named substitutes	To receive apologies for absence and details of any Councillor (or co-optee substitute) nominated to attend this meeting in place of a member of this Committee.
2. Declarations of interest and of Party Whip	To invite Councillors to declare any interest they may have in items on the Agenda and any Party Whip.
3. Minutes (Pages 1 - 4)	To confirm the minutes of the previous meeting of the Crime and Disorder Scrutiny Panel as a correct record. (Minutes attached).
4. Future arrangements for policing in Redditch	To receive an overview of the future arrangements for policing in Redditch from the Divisional Superintendent for West Mercia (North Worcestershire) (No documents attached)
5. North Worcestershire Community Safety Partnership update and options for future scrutiny (Pages 5 - 54)	To receive an update report on the progress of North Worcestershire Community Safety Partnership and to consider options for future scrutiny. (Report attached)
6. North Worcestershire Community Safety Partnership minutes (Pages 55 - 70)	To consider the minutes of the North Worcestershire Community Safety Partnership meeting held on 11th June 2013. (Minutes attached)

7. Exclusion of the Press and Public

Should it be necessary, in the opinion of the Borough Director, during the course of the meeting to consider excluding the public from the meeting on the grounds that exempt information is likely to be divulged, it may be necessary to move the following resolution:

“That, under S.100 (A) (4) of the Local Government Act 1972, the public be excluded from the meeting for the following matter(s) on the grounds that it/they involve(s) the likely disclosure of exempt information as defined in the relevant paragraphs (to be specified) of Part 1 of Schedule 12 (A) of the said Act”.

These paragraphs are as follows:

Subject to the “public interest” test, information relating to:

- Para 1 – any individual;
- Para 2 – the identity of any individual;
- Para 3 – financial or business affairs;
- Para 4 – labour relations matters;
- Para 5 – legal professional privilege;
- Para 6 – a notice, order or direction;
- Para 7 – the prevention, investigation or prosecution of crime;

and may need to be considered as ‘exempt’.



Crime and Disorder Scrutiny Panel

Wednesday, 10 April 2013

MINUTES

Present:

Councillor Andrew Brazier (Chair), and Councillors Pattie Hill and Roger Hill

Also Present:

Ken Hazeldene, Chair, North Worcestershire Hate Incident Partnership

Officers:

J Cooper and J Willis

Committee Services Officer:

M Craggs

56. APOLOGIES AND NAMED SUBSTITUTES

Apologies were received from Councillors Joe Baker and Brandon Clayton.

57. DECLARATIONS OF INTEREST AND OF PARTY WHIP

There were no declarations of interest nor of any party whip.

58. MINUTES

RESOLVED that

the minutes of the meeting of the Panel held on Thursday 31st January 2013 be approved as a correct record and signed by the Chair.

.....
Chair

Crime and Disorder Scrutiny Panel

59. NORTH WORCESTERSHIRE COMMUNITY SAFETY PARTNERSHIP PERFORMANCE FRAMEWORK

The Panel received the latest Community Safety Partnership Framework Performance Report which contained year to date totals up to January 2013 for 2011/12 and 2012/13 with the relevant percentage change, both for North Worcestershire collectively, and for the individual districts of Redditch, Bromsgrove, and Wyre Forest. The report contained five recommendations for the North Worcestershire Community Safety Partnership (NWCSP) which had all been accepted.

In particular, Members were referred to the second and fifth recommendations. The second recommendation concerned the updated “perceptions of ASB (Anti-Social Behaviour) as a problem” data as obtained through the Worcestershire Viewpoint survey conducted in November 2012. 216 completed forms had been received for Redditch. Of these, perception of ASB in the area was 14.2%. This had fallen from 19.7% in November 2011.

The Panel felt that perception was often all important in terms of ASB. In particular, Members felt that young people who were innocently congregating together were arguably too often seen as a potential threat. However, Officers referred to work that was being undertaken in Redditch to improve the general perception on young people through projects financed by positive activities funding. Members were very interested in receiving more information on this work at a future meeting whenever it was available.

The Panel also referred to the final recommendation that the NWCSP note that additional analysis had been requested on shoplifting in Redditch in response to rising crime numbers. Officers explained that the increase of sixty offences in Redditch during the previous twelve months would most likely be attributable to one or two prolific offenders who were spiking the figures. Members were reassured therefore that the increase in incidents did not suggest that Redditch in general had a shoplifting problem.

However, action was being taken to reduce shoplifting incidents. In particular, the Business Crime Partnership had been liaising with its equivalent body in Taunton to find out more about the proactive approach taken to tackling shoplifting that had been successful in reducing the number of related incidents in the local area.

Crime and Disorder Scrutiny Panel

Members were reassured that shoplifting was taken very seriously in Redditch and was regarded as a form of theft, and heard that the local Prolific Offender Management Group regularly examined the characteristics of prolific and other priority offenders to help minimise their impact on the community. It was expected that this would include persons committing theft from shops.

Members questioned the suitability of the term 'shoplifting' and suggested that it should be amended to 'theft in shops'. Officers agreed to check the official Home Office offence description.

Officers explained that theft of alcohol could be combated through licensing powers. This could involve the introduction of a licence condition that required all alcohol products to be positioned sensibly in retail outlets, for example, not in close proximity to an entrance/exit.

Finally, the Panel heard that the creation of the NWCSP had led to greater sharing of information and improved general partnership working between the individual districts to help combat crime. For example, Officers in Redditch had contacted their counterparts in Bromsgrove to find out what they had to done to tackle the vandalism of local allotments as this had been a recent problem in the Borough. This was a good example of partnership working.

RESOLVED that

- 1) The Panel receive a report at a forthcoming meeting on the outcomes of positive activities funding projects on the perception of young people in Redditch; and**
- 2) The report be noted.**

60. NORTH WORCESTERSHIRE COMMUNITY SAFETY PARTNERSHIP MINUTES

The Panel received the confirmed minutes of the Shadow North Worcestershire Community Safety Partnership (NWCSP) meeting on 17th December 2012.

Members referred to the presentation on Novel Psychoactive Substances (NPS) that had been delivered by the Drug and Alcohol Action Team (DAAT), and queried whether there should be greater awareness of this. However, some concern was expressed that this

Crime and Disorder Scrutiny Panel

could lead to increased awareness amongst potential users. Therefore it was acknowledged as a difficult issue.

The Panel also referred to the presentation on Community Payback, and expressed their continued support for the scheme which had clearly benefitted the recent offenders and the wider community. However, it was felt that there more opportunities were needed for recent offenders to participate in the scheme locally.

Finally, Members queried whether the definition of hate crime could potentially be widened to include attacks on other sub-groups of society. It was understood that Greater Manchester Police had very recently agreed to record alternative sub-culture as a hate motivation. The Chair of the North Worcestershire Hate Incident Partnership, Ken Hazeldene confirmed that he could refer this onto the Partnership to consider. However, it was commented that recorded incidents of hate crime, as it was currently defined, had reduced in Redditch.

RESOLVED that

the report be noted.

61. REFERRALS

There were no referrals.

62. WORK PROGRAMME

Members earlier agreed to include a presentation on youth projects in Redditch that had been financed by positive activities funding on the Panel's Work Programme.

RESOLVED that

the Work Programme be noted.

The Meeting commenced at 6.30 pm
and closed at 7.25 pm

Elected Member

BRIEFING NOTE

To: Crime and Disorder Scrutiny Panel
 From: Bev Houghton
 Service: Community Safety
 Contact No: 01527 534187

CC: Sue Hanley – Chair of NWCSP & Deputy Chief Executive
 Cllr Rebecca Blake – Portfolio Holder for Community Safety
 Judith Willis – (Acting) Head of Community Services

SUBJECT	North Worcestershire Community Safety Partnership
DATE	22 nd October 2012
PURPOSE	To provide an update on the progress of North Worcestershire Community Safety Partnership.
BACKGROUND	
<p>In November 2011 following a full options appraisal and formal agreement by the relevant Responsible Authorities, the three district CSPs in Redditch, Bromsgrove and Wyre Forest agreed to merge to create a single North Worcestershire CSP. Following development of Terms of Reference for the new CSP and preparation of a formal application to merge, the North Worcestershire CSP operated in shadow form whilst awaiting formal Home Office approval of the new structure.</p> <p>Following the elections of Police and Crime Commissioners (PCC) in November 2012, statutory responsibility for overseeing the merger of the CSP's fell to the Office of the West Mercia PCC. On 24th May 2013, the North Worcestershire CSP Combination Agreement which formally endorsed the North Worcestershire merger was signed by all Community Safety Responsible Authorities and Bill Longmore, the West Mercia PCC. It is believed to be the first Combination Agreement in the country to be agreed and endorsed by a PCC.</p>	
CURRENT POSITION	
<p>Initially in shadow arrangements, North Worcestershire CSP has been operation since July 2012. New Terms of Reference were adopted in September 2012 outlining Membership and operating procedures. (Appendix 1)</p> <p>Since September 2012, a number of changes identified in the Term of Reference have now taken place.</p> <p>As of the 22nd November 2012 and following the election of the West Mercia PCC, the former Responsible Authority member, West Mercia Police Authority ceased to exist. The PCC is not a statutory Responsible Authority in CSPs but the Police Reform and Social Responsibility Act 2011 does placed a duty on CSPs and the PCC to work together to develop local Crime and Disorder Strategies.</p> <p>As of the 31st March, Primary Care Trusts (PCT) also ceased to exist. Redditch and Bromsgrove Clinical Commissioning Group (CCG) and Wyre Forest CCG replaced Worcestershire PCT as a Responsible Authority member of the CSP.</p>	

District Operational Groups are now identified as Safer District Groups and are identified as Safer Bromsgrove Group, Safer Redditch Group and Safer Wyre Forest Group. North Worcestershire Hate Incident Partnership and the Redditch & Bromsgrove Safeguarding Adults Group continue to operate as sub-groups of the CSP and Wyre Forest has now established a district Safeguarding Adults Group based on the Redditch & Bromsgrove model.

NORTH WORCESTERSHIRE CSP PLAN

The CSP still has a requirement to produce a three year rolling plan outlining how the Partnership is going to address key crime and community safety priorities, as identified in its annual Strategic Assessment. North Worcestershire CSP released its Community Safety Partnership Plan for 2013-16 in August of this year (Appendix 2). This was following discussions with the Office of the PCC and the Worcestershire Safer Communities Board to ensure strategic links with the West Mercia Police and Crime Plan (2013-17) and the Worcestershire Community Safety Agreement (2013-14).

The North Worcestershire CSP priorities are:

- To maintain low crime levels and improve public confidence
- Reducing the impact of alcohol and drugs misuse on communities
- Reducing Domestic Abuse and Safeguarding Vulnerable People
- Reducing re-offending
- Reducing Anti Social Behaviour

Within the Partnership Plan there is an outline of key objectives, actions and measures for each priority and these will form the basis of the performance management of the CSP over the lifetime of the plan.

CSP FUNDING 2013/14

Prior to the merger, each district CSP delegated responsibility for its existing budgets to its respective district operational group. This ensured that any funding allocated to individual districts remained solely for the benefit of the local area it had been allocated to.

Following the November 2012 elections, all Community Safety funding streams previously distributed by a district or county basis became the responsibility of the PCC to allocate.

After taking up office, the West Mercia PCC released his first round of Community Safety Funding in January 2013 and North Worcestershire CSPs applications for funding were agreed at the same amounts as previous year's funding as follows:-

Initiative	Amount
North Worcestershire Hate Incident Partnership	£3,000
Community Engagement, Consultation and Communications	£5,000
North Worcestershire Home Security Projects	£6,000
North Worcestershire CSP Analyst	£30,000
Safer Bromsgrove Group*	£25,994
Safer Redditch Group*	£39,810
Safer Wyre Forest Group*	£40,653
Total	£150,457

*District specific funding amounts allocated using the same needs-based formula employed in previous years.

In September 2013, the PCC opened his second year of Community Safety Funding for 2014/15 to allow for early applications. North Worcestershire CSP are currently drafting funding bids up to same amounts as last year to support both North Worcestershire wide and district specific projects and initiatives.

LOCAL DELIVERY – SAFER REDDITCH GROUP

Local delivery of Community Safety projects and initiatives falls under the remit of the Community Safety Operational groups. In Redditch, the Safer Redditch Group meets on a 6 weekly basis to monitor district performance and review local operational delivery against the actions outlined in the Community Safety Partnership Plan. This group is the first point of contact for any local crime and community safety issues or concerns that may require a multi-agency response.

Current Safer Redditch projects and initiatives include:-

The Home Security Project	Provides security advice and improvement to victims of burglary and those fearful of being burgled
The Sanctuary Scheme	Provides security improvements to survivors of Domestic Abuse to assist them to remain and feel safe in their own homes
Forensic Property Marking (SmartWater) Scheme	Distribution of reduced cost SmartWater kits to members of the public, residents associations and community groups. All victims of burglary receive a free Kit.
Metal Theft Project	Project to deter theft of lead flashings from domestic and public buildings using forensic property marking.
Redditch Roadway Arts Project	High profile project to display local artwork on bus shelters, underpasses and shop shutters to reduce graffiti, ASB and fear of crime
Planning Consultation	Officers trained to national policing standards provide crime prevention/community safety feedback on planning applications
National Campaigns and Awareness raising	Provide local campaigns and seasonal initiatives supporting national campaigns such as White Ribbon Campaign, Teenage Domestic Abuse and National Responsible Drinking Christmas Campaigns

Local projects delivered by the NW Hate Incident Partnership include:-

Schools 'Respect' Programme	Delivers community safety workshops and education sessions on Hate Crime and a variety of other community safety subjects in local Middle and High Schools
Hate Incident Reporting Scheme	Provides opportunities for victims, witnesses and third parties to report hate incidents on-line, by telephone or at a number of community reporting centres across the district.
Hate Crime Awareness film and training package	The Hate Incident Partnership has produced a training film and are developing an accompanying manual to increase awareness of hate crime and its effects on individuals and communities.

COMMUNITY REPRESENTATION AND SCRUTINY

Local representation on the North Worcestershire CSP is fulfilled through three positions. Redditch Borough Council's Elected Member representative is the Portfolio Holder for Community Safety, Cllr Rebecca Blake. The Council's Responsible Authority representative and also Chair of the CSP is Sue Hanley, Deputy Chief Executive and the Safer Redditch Group is represented by its Chair, Bev Houghton, Community Safety Manager. Parish Councils are also represented on the CSP by the County Association of Local Councils (CALC).

Scrutiny arrangements for the CSP remain unchanged with local authorities having a statutory duty to scrutinise the work of its local CSP under Section 19 of the Police and Justice Act 2006. This remit is fulfilled by the Crime and Disorder Scrutiny Panel and its reports to the Council's Overview and Scrutiny Committee.

Alongside the relationship the Council has with CSP, there is also a direct role in holding the Police and Crime Commissioner to account through the established West Mercia Police and Crime Panel. Redditch Borough Council's representative on the panel is Community Safety Portfolio Holder, Cllr Rebecca Blake and information about the work of the group can be found at <http://www.worcestershire.gov.uk/cms/democratic-services/committees-and-panels/holder/police-and-crime-panel.aspx>

FURTHER INFORMATION

For further information on the North Worcestershire CSP, the Safer Redditch Group or any associated projects or initiatives please contact:-

Bev Houghton, Community Safety Manager - 01527 64252 ext. 3194
bev.houghton@bromsgroveandredditch.gov.uk

James Cooper, Senior Community Safety Project Officer – 01527 534187
james.cooper@bromsgroveandredditch.gov.uk

AUTHOR

Bev Houghton
Community Safety Manager
01527 64252 ext. 3194

North Worcestershire Community Safety Partnership

TERMS OF REFERENCE AND OPERATING PROTOCOLS

JULY 2012

<u>CONTENTS</u>	<u>PAGE NO</u>
1. Name and Geographical Area	2
2. Requirements of the Crime and Disorder Act (1998) and Subsequent Amendments	2
3. Purpose of the North Worcestershire CSP	2
4. Aims of the North Worcestershire CSP	3
5. Structure of the North Worcestershire CSP	4
6. Review of the Terms of Reference	4
7. Financial Procedures and Protocols	4
8. Operation of the North Worcestershire CSP	5
9. Community Safety Operational Groups	8
10. Performance Management	9
11. Communications	9
APPENDIX 1 - Map of the Geographical Area covered by the North Worcestershire CSP	11
APPENDIX 2 - North Worcestershire CSP Structure Chart	12
APPENDIX 3 - North Worcestershire CSP Draft Communications Strategy and Operating Protocols	13

North Worcestershire Community Safety Partnership

Terms of Reference and Operating Protocols

July 2012

1. Name and Geographical Area

The name of the merged Community Safety Partnership (CSP) for Bromsgrove District, Redditch Borough and Wyre Forest District is the **North Worcestershire Community Safety Partnership**, established in July 2012 to meet the requirements of the Crime and Disorder Act 1998 as amended.

The North Worcestershire Community Safety Partnership (CSP) covers the whole area within Bromsgrove, Redditch and Wyre Forest Councils' administrative boundaries. (Map shown at Appendix 1).

2. Requirements of the Crime and Disorder Act (1998) and Subsequent Amendments

The Crime and Disorder Act (1998), amended by the Police Reform Act (2002), makes it clear that the duty to carry out audits and develop strategies to reduce reoffending, tackle crime and disorder, anti social behaviour, alcohol and substance misuse and any other behaviour which has a negative effect on the local environment rests with **Responsible Authorities (RA)**. These responsible authorities include:

- In multi-tier authority areas the District Council and County Council
- Police
- Police Authority (until 22 November 2012)
- Health (Primary Care Trusts until 31 March 2013 and Clinical Commissioning Groups after this)
- Probation

Other agencies and organisations form the North Worcestershire CSP as either **Co-operating Bodies (CB)** or **Invitees to Participate (IP)** as defined by Section 5 (2) and Section 5 (3) of the Act respectively.

3. Purpose of the North Worcestershire CSP

To provide a strategic and co-operative approach between agencies and communities within North Worcestershire to address local community safety issues and achieves the Partnership's vision of 'Keeping North Worcestershire a safe place to live, work and visit.'

This vision is underpinned by the following:

- To address the wider causes of crime and fear of crime.
- To encourage community cohesion.

- To reduce alcohol related harm.
- To identify opportunities to reduce substance misuse and re-offending.
- To promote a community where domestic abuse and the fear of domestic abuse is not tolerated.
- To promote a community where hate crime is unacceptable and those victims of hate crime are supported.
- To provide effective, strategic leadership generating effective partnership working.
- To deliver measurable outcomes.

4. Aims of the North Worcestershire CSP

The aims of the North Worcestershire CSP are:

- To fulfil the obligations set out in the Crime and Disorder (1998) and subsequent legislative changes.
- To promote integration of Community Safety Plans into mainstream policies and services.
- To agree specific targets for improving Community Safety.
- To review achievements against targets and take appropriate action.
- To consider the annual assessment of Crime and Disorder trends and its impact on Community Safety strategy.
- To promote effective co-ordination of Community Safety activities.
- To promote information sharing and best practice in Community Safety.
- To promote the work of the CSP and its projects in the media and community as appropriate.
- To identify and explore opportunities to attract funding.
- To lead or support bids for funding.
- To promote continuing consultation on Community Safety.

5. Structure of the North Worcestershire

Community Safety in Worcestershire is structured in three tiers, each with its own remit and responsibilities but interrelated in achieving goals. The North Worcestershire CSP is managed strategically by the Worcestershire Safer Communities Board (SCB). Appendix 2 provides a structure chart showing the partnership links and responsibilities.

The three tiers are:

1. The **Safer Communities Board**: provides strategic level leadership and co-ordination of cross cutting community safety activity in Worcestershire.
2. The **North Worcestershire CSP**:
 - Monitors and evaluates the implementation of the Partnership Plan for the districts of Bromsgrove, Redditch and Wyre Forest.
 - Submits bids for external funding to support delivery of the Partnership Plan.
 - Links the work of the CSP to other bodies whenever required.
 - Identifies support required by the CSP to progress the delivery of the Partnership Plan.
3. a) **Community Safety Operational Groups** in Bromsgrove, Redditch and Wyre Forest report directly to the North Worcestershire CSP and are responsible for delivering the actions and outcomes identified by the North Worcestershire Community Safety Partnership Plan. Project Leaders can be appointed by its Chair to head up individual projects as required.
- b) The **North Worcestershire Hate Incident Partnership** (NWHIP) and the **Safeguarding Adults Groups** are responsible for delivering activities that affect the most vulnerable people in our communities. These groups will feed into the local Community Safety Operational Groups.

6. Review of Terms of Reference

The North Worcestershire CSP will regularly monitor and review its Terms of Reference in the light of changing circumstances. In any event, the Terms of Reference will be reviewed formally every two years.

7. Financial Procedures and Protocols

- It shall be the duty of the Chairs of the local Community Safety Operational Groups in partnership with the Community Safety Manager or equivalent to regulate and control any finances allocated to the respective district areas prior to the establishment of the North Worcestershire CSP.

- Any community safety grant awarded following its formal adoption will be allocated by the North Worcestershire CSP.
- Redditch Borough Council and Wyre Forest District Council will act as custodians of North Worcestershire CSP funds which under the Local Government Finance Act and Accounts and Audit regulations will be incorporated into their accounts.
- The Local Authority Community Safety Manager or equivalent shall be responsible for supervising the financial arrangements and reporting on all financial matters.
- All bids and claims for external funding will be approved by the North Worcestershire CSP.
- North Worcestershire CSP will seek to pro-actively commission projects and will establish a methodology for receiving and evaluating funding bids.

8. Operation of the North Worcestershire CSP

Key Responsibilities

- Compliance with statutory requirements of the Crime and Disorder Act (1998), subsequent legislative amendments to the act and any other applicable legislation.
- To ensure close and effective working relationships with the Worcestershire Drug and Alcohol Action Team (DAAT) and the South Worcestershire CSP are maintained and enhanced.
- To be responsible for the development of the Partnership Plan and ensure that sufficient resources are allocated and aligned for delivery of its outcomes.

Criteria for Membership

Organisations should:

- Be a **'responsible authority' (RA)** a **'co-operating body' (CB)** or an **'invitee to participate' (IP)** as defined by the Crime and Disorder Act (1998) or subsequent legislative amendments or have a strategic responsibility for community safety related issues.

The representative from an organisation should be able to:

- Commit human and financial resources and be able to effect organisational change to address blockages, problems and barriers to effective delivery. It is therefore recommended that the level of representation should be at Chief/Senior Officer level.

Membership of the North Worcestershire CSP

The following organisations are members of the North Worcestershire CSP:

- Bromsgrove District Council (RA)
 - Hereford and Worcester Fire and Rescue Service (RA)
 - Redditch Borough Council (RA)
 - West Mercia Police (RA)
 - West Mercia Police Authority (RA) (until 22 November 2012)
 - West Mercia Probation Trust (RA)
 - Worcestershire County Council (RA)
 - Worcestershire Primary Care Trust (RA) (Until 31 March 2013 and Clinical Commissioning Groups after this)
 - Wyre Forest District Council (RA)
 - Bromsgrove and Redditch Magistrates Bench Chair (IP)
 - Chairperson of the Community Safety Operational Group for Bromsgrove (IP)
 - Chairperson of the Community Safety Operational Group for Redditch (IP)
 - Chairperson of the Community Safety Operational Group for Wyre Forest (IP)
 - Chairperson of the North Worcestershire Hate Incident Partnership (IP)
 - Herefordshire and Worcestershire Youth Offending Service (IP)
 - HMP Hewell (IP)
 - Kidderminster Magistrates Bench Chair (IP)
 - Portfolio Holder for Community Safety for Bromsgrove District Council (IP)
 - Portfolio Holder for Community Safety for Redditch Borough Council (IP)
 - Portfolio Holder for Community Safety for Worcestershire County Council (IP)
 - Portfolio Holder for Community Safety for Wyre Forest District Council (IP)
 - Victim Support (IP)
 - Worcestershire County Association of Local Councils (IP)
 - Worcestershire DAAT (IP)
 - Worcestershire Regulatory Services (IP)
 - VCS organisation to be invited (IP)
- Membership of North Worcestershire CSP will consist of one nominee (and a named substitute) from each of the above organisations.
 - Project Managers will be invited to attend as required.
 - The Chairperson may invite other agencies and/or officers as required depending on the nature/content of the meeting.

New Members

- Additional members may join the North Worcestershire CSP on agreement and formal resolution by members.

Meetings

- Meetings will be held on a quarterly basis.

- All members shall have one nominee on the partnership, although they may bring professional advisors to the meeting with the agreement in advance of the Chairperson.
- All members of the partnership are encouraged to aim for 100% attendance at meetings. Substitutes must have sufficient authority to represent/commit resources on behalf of their organisation.

Chairperson and Vice Chairperson

- The partnership will elect a Chairperson and Vice Chairperson who will each have a term of up to two years and stand for re-election at the end of each two year period.
- Eligibility for the role of Chairperson and Vice Chairperson is restricted to the representatives of the Responsible Authorities only.

Decision Making

- North Worcestershire CSP will work to agree all decisions by consensus. However, if this is not possible decisions will be agreed by simple majority. For the purposes of transparency 11 members (six of which must be responsible authorities) will be considered quorate.
- Only one nominee from each organisation will be entitled to vote.

Other Responsibilities

- To identify the training and support needs of members to ensure the necessary skills exist within the partnership to deliver its core functions.
- To monitor performance in relation to local, regional and national targets and ensure this information is available to be reported to the SCB.
- To provide updates to the Local Strategic Partnerships as required and provide representation at its board meetings when requested.
- To represent the North Worcestershire CSP as appropriate at local, regional and national forums.
- To identify opportunities to improve data collection and analysis.

Scrutiny Arrangements

- Under Sections 19 to 20 of the Police and Justice Act (2006) North Worcestershire CSP will be subject to the scrutiny arrangements in place for each of the Local Authorities within its operating area.
- With adequate notice members of the North Worcestershire CSP will make themselves available to the district/county Scrutiny Committee to provide information or answer questions on the work of the CSP in the appropriate area.

Delegation of Responsibilities

The North Worcestershire CSP Chairperson is responsible for:

- Representing the interests of the North Worcestershire CSP at meetings, seminar and other functions.
- Voting for or agreeing to supporting projects that underpin the delivery of the Partnership's Plan and operational priorities.
- Chairing regular quarterly meetings of the Partnership.
- Calling extra-ordinary meetings of the Partnership or the Operational Groups when necessary.
- In the absence of the Chairperson, the Vice Chairperson will assume these responsibilities and be able to represent the North Worcestershire CSP.
- Support Officers can represent the North Worcestershire CSP as needed but cannot assign or reassign funding to projects without prior agreement from the CSP. Neither can they alter or amend plans or outcomes without consulting the Chairperson/Vice Chairperson.
- The Community Safety Managers or equivalent across Bromsgrove, Redditch and Wyre Forest will meet regularly to co-ordinate the North Worcestershire CSP and support the Chairperson of the Partnership in agenda setting and fulfilling his/her responsibilities.
- The Community Safety Managers or equivalent will ensure that the interests of the North Worcestershire CSP and their local Operational Groups are fully represented at meetings and other functions.

9. Community Safety Operational Groups

Key Responsibilities

- To be responsible for the effective delivery of the North Worcestershire Partnership Plan and to report directly to the North Worcestershire CSP and its Chairperson.
- To work with partners to co-ordinate responses to tackle any predicted or emerging issues and to monitor the performance of actions and projects in relation to these responses.

Criteria for Membership

- There is a core of organisations and individuals that may be requested to attend and are selected depending on nature/content of the Operational Group meeting.
- Membership for these groups will vary from district to district depending on the need for that area.

- All Operational Group meetings will include the attendance of representatives from the responsible authorities.
- Each Operational Group will have agreed terms of reference available for submission to the North Worcestershire CSP on request.

Financial Procedures and Protocols

- It shall be the duty of the Chairperson and Community Safety Manager or equivalent to regulate and control the finances allocated to the Operational Group. The Community Safety Managers or equivalent shall be responsible for supervising the financial arrangements and for reporting on all financial matters.
- Redditch Borough Council and Wyre Forest District Council will act as custodian of Partnership funds which, under the Local Government Finance Act and Accounts and Audit regulations, will be incorporated into their accounts.
- All new bids and claims for funding will be approved by the North Worcestershire CSP where relevant.

10. Performance Management

The North Worcestershire CSP will be responsible for ensuring an effective performance management framework is in place in order to monitor and evaluate its work and outcomes.

The North Worcestershire CSP will:

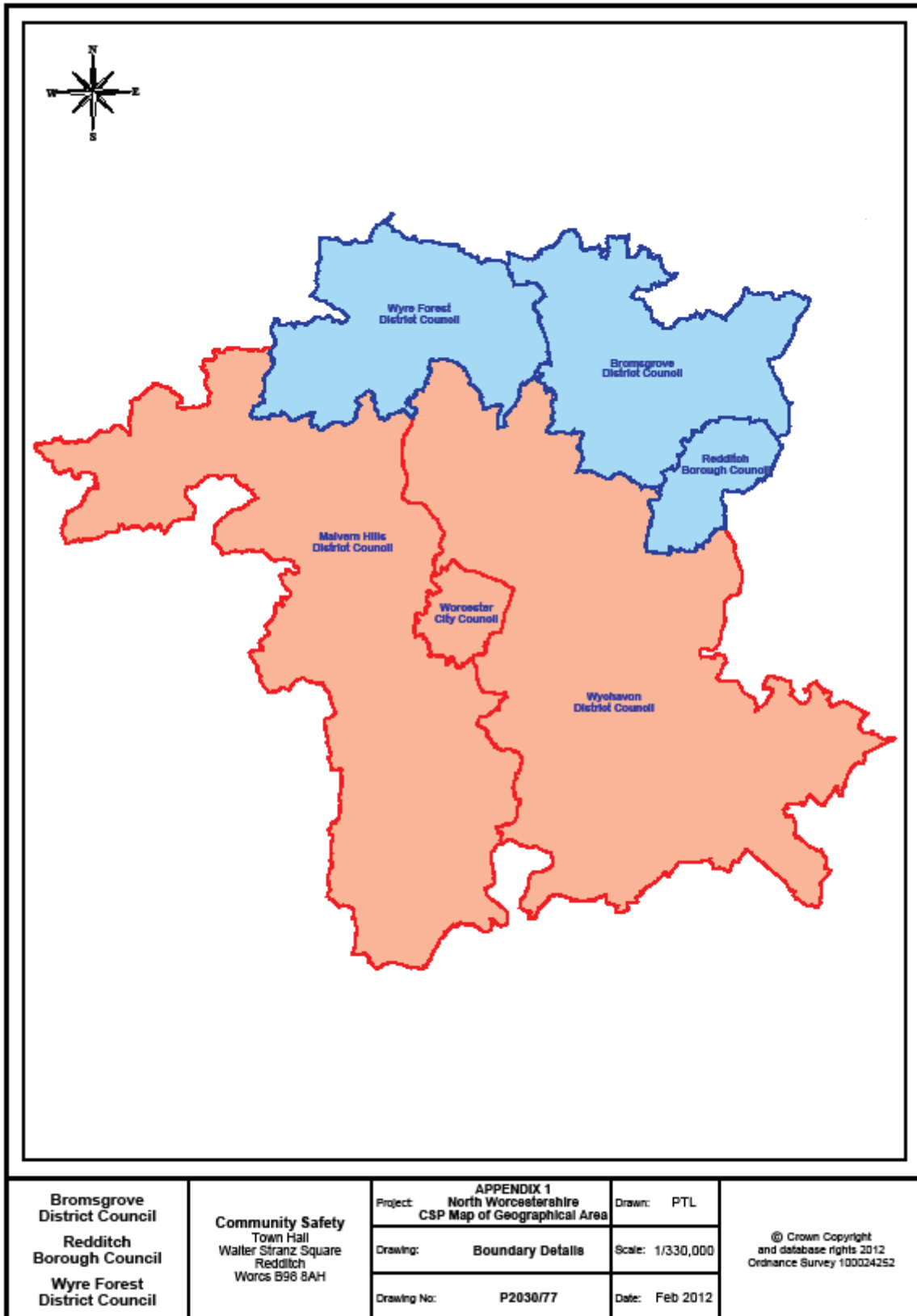
- Oversee the implementation of the North Worcestershire Community Safety Partnership Strategic Assessment.
- Implement, monitor and review the North Worcestershire Community Safety Partnership Plan and assess the delivery of associated projects and milestones.
- Monitor and assess the value for money of community safety activities in North Worcestershire.
- Receive high level performance reports from each of the Operational Groups and actively scrutinise the work of the groups and all associated projects, promoting change and challenging convention where necessary.
- Report the North Worcestershire CSP performance to the Worcestershire SCB via the Policy and Commissioning Group as part of the countywide community safety performance framework.

11. Communications

- A Communications Strategy should provide an effective way of informing the local community and stakeholders of the work of the North Worcestershire CSP and provide consistent messages from its partners.
- Appendix 3 is the North Worcestershire CSP Communications Strategy - Operating Protocols.
- The strategy details the operating protocols for internal and external communications for North Worcestershire, the Operational Groups and branding and marketing of the North Worcestershire CSP.
- Ultimately the Chairperson of the North Worcestershire CSP will be responsible for ensuring that communications are generated and released on behalf of the partnership.

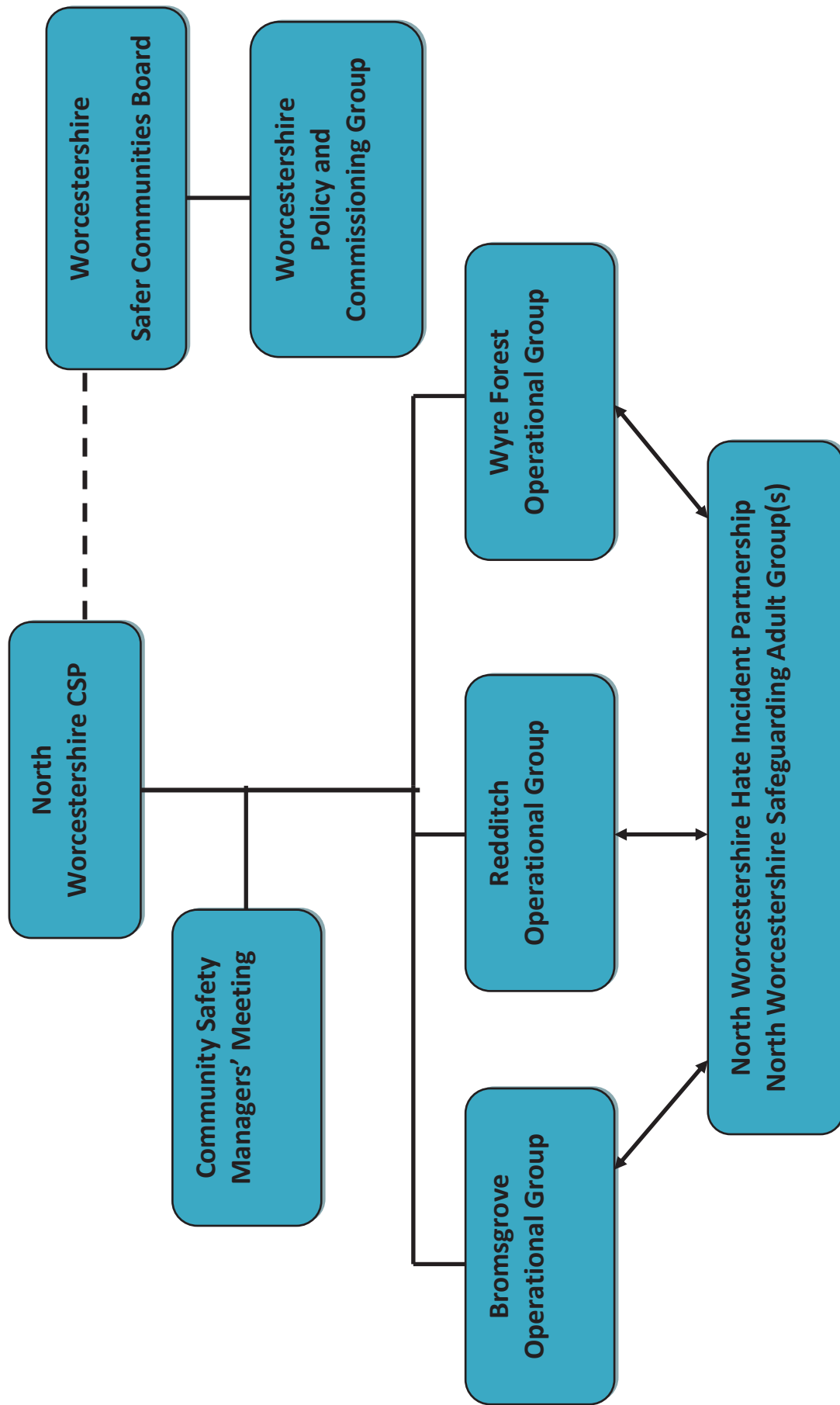
APPENDIX 1

Map of the Geographical Area covered by the North Worcestershire CSP



APPENDIX 2

North Worcestershire CSP Structure Chart



APPENDIX 3

North Worcestershire CSP Communications Strategy - Operating Protocols

Channels of Communication

- It is suggested that the current communications channels (internal and external) available across North Worcestershire are mapped by the Community Safety Managers or equivalent across Bromsgrove, Redditch and Wyre Forest.
- The North Worcestershire CSP will agree the most appropriate communications channels to transmit key messages to its audiences.
- Possible channels include:
 - Publications e.g. newspapers, internal newsletters
 - Annual reports, business plans, research and evaluation reports
 - Media including TV and radio
 - Websites
 - Events
 - Word of mouth, public meetings, presentations, focus groups
 - Marketing materials e.g. leaflets, posters and brochures

Roles and Responsibilities

- In the interest of consistency and professionalism all communications will be co-ordinated through the Community Safety Managers or equivalent in conjunction with the Chairperson of the North Worcestershire CSP and/or the Chairperson of the Operational Groups where appropriate.
- Community Safety Managers or equivalent will ensure that relevant partner agencies are given the opportunity to comment on all communications before general release. Partners will be asked to ensure they comment within a timely manner to ensure the release meets press deadlines.
- Partners will agree to share information and knowledge that may be of mutual benefit.
- Partners will agree to keep each other fully informed of any issues which may affect each other, for example press interest in a particular story.
- Partners will agree to notify each other of any campaigns, publications etc. which may be of mutual interest.

Press Releases

- All North Worcestershire CSP press releases must include a short quote from the Chairperson and where appropriate and beneficial additional quotes should be included from key partners.

- All press releases must be signed off by the Chairperson or the Vice Chairperson in advance of circulation for release.
- The Operational Groups may issue press releases where a project has solely been delivered in their respective district. Where this is the case a press release must include a quote from the North Worcestershire CSP Chairperson and the Operational Group Chairperson. Both parties must have signed off the press release before its circulation.
- A draft copy of the press release should be sent to the Community Safety Managers or equivalent who will liaise with the North Worcestershire CSP Chairperson for endorsement.
- The Community Safety Managers or equivalent will then advise the partner(s) issuing the press release of any comments or additions that the Chairperson may wish to be considered for inclusion.
- Following any required revision, the partner(s) can then forward the press release to the local media, ensuring the Chairperson is advised of any photo-call opportunity.
- Press releases must be issued on North Worcestershire CSP headed paper.
- A copy of the issued press release must be given to the Community Safety Managers or equivalent for file and audit purposes.

Resources

- The North Worcestershire CSP will agree the allocation of pooled resources for joint CSP communications activity. It is anticipated that North Worcestershire CSP projects will be identified at the beginning of the financial year, which will support forward planning of communications related activity.

Branding and Marketing

- The North Worcestershire CSP is developing a logo to be used for all branding related activities. It has also adopted the strap line 'North Worcestershire Community Safety Partnership – Keeping North Worcestershire a safer place to live, work and visit.'
- Operational Groups will use the North Worcestershire CSP logo and/or the strap line 'Safer Bromsgrove/Redditch/Wyre Forest - supported by the North Worcestershire Community Safety Partnership.'

Monitoring and Evaluation

- A review of the communications strategy will be undertaken on an annual basis.
- All communications activities will be collated and reported on a quarterly basis to the North Worcestershire CSP.
- A process to evaluate the effectiveness of communication activities will be developed.



North Worcestershire
Community Safety Partnership

**NORTH WORCESTERSHIRE
COMMUNITY SAFETY PARTNERSHIP
PLAN
2013-16**

Contents

	Page No
Foreword	3
About North Worcestershire	5
North Worcestershire Community Safety Partnership	6
Strategic Assessment	9
North Worcestershire Community Safety Partnership Priorities	10
Action Plans 2013/14	19
Partnership Changes and Challenges	24
Monitoring Progress	25
Resources	25
Section 17 Responsibilities	26
Community Engagement	26
Communications Strategy	27
Partners	30
Contact Us	32

Foreword

It gives me great pleasure to introduce the first Partnership Plan of the newly formed North Worcestershire Community Safety Partnership (CSP).

This North Worcestershire partnership will continue to build on the efforts and achievements of the previous district CSPs and we believe that by coming together on a more formal, statutory basis we have put ourselves in a stronger position to respond to any forthcoming challenges in the arena of community safety and crime reduction.

There has already been significant change to our way of working, for example the dissolution of Police Authorities and the election of Police and Crime Commissioners, the move away from central government control towards localism and significant changes within health services that have created a new CSP responsible authority in Clinical Commissioning Groups.

North Worcestershire CSP is believed to be the first in the country to have officially merged following the signing of a combination agreement by a PCC and this new arrangement means that organisations are better placed to work together to reduce crime, disorder and anti-social behaviour affecting local communities; avoiding duplication, sharing resources and expertise and promoting good practice across the whole of North Worcestershire.

Inevitably this plan has been developed at a time of substantial economic change. Budgets across the public sector continue to reduce dramatically and our partners will need to identify significant savings in the forthcoming years whilst continuing to provide and maintain high quality services that meet the needs of customers and users. Whilst this will no doubt present some challenges, our partnership can take great pride in a successful history of joint working and collaboration.

The foundations of North Worcestershire CSP are built on 3 district partnerships that have a proven track record of identifying and channelling external and mainstream funding toward community safety initiatives. Our partners will continue to work together to improve safety across the area, identifying the most serious crime and community safety problems that affect our communities and allocating resources effectively to solve those issues.

Within this economic context we should never forget the emotional costs of crime, anti-social behaviour, drug and alcohol misuse which are borne by victims, their families and local communities. For example, research suggests that the measurable cost of a single residential burglary offence to the householder and the Criminal Justice System is in the region of £3,500. However, we also know that the impact of that crime on the victim and their family can be a deeply traumatic and life altering experience and that is something that it is impossible to put a price on.

Our planned work for the next three years is based on five priorities, with proposed actions for each set out in greater detail later in this document:

- To maintain low crime levels and improve public confidence
- Reducing the impact of alcohol and drugs misuse on communities

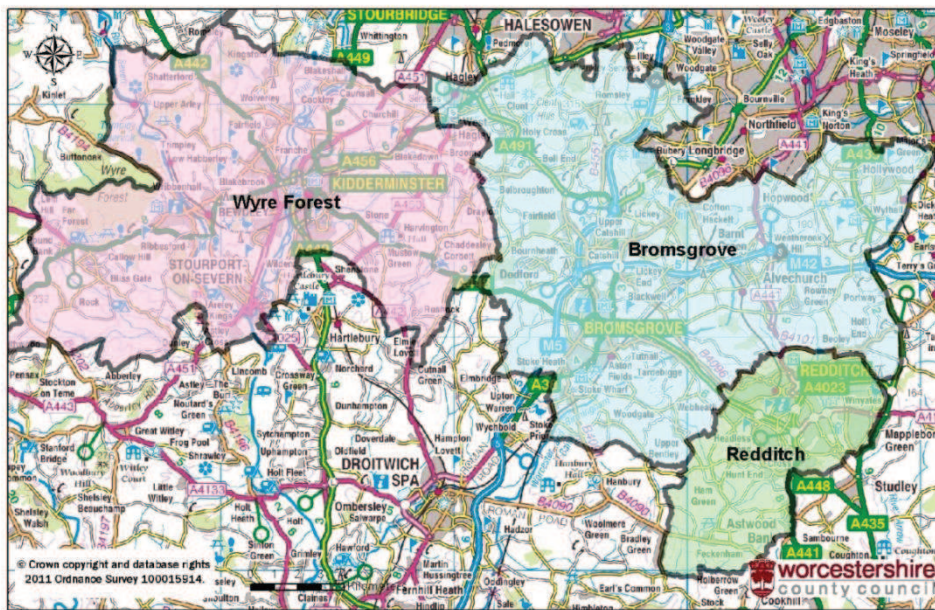
- Reducing Domestic Abuse and Safeguarding Vulnerable People
- Reducing re-offending
- Reducing Anti Social Behaviour

Community Safety Partnerships were introduced in recognition of the fact that the causes of crime, anti-social behaviour, drug and alcohol misuse and environmental disorder are varied and complex. We recognise that the solutions to these problems will require innovation, shared expertise and high levels of co-operation and teamwork. We also recognise that the rich diversity amongst our communities in North Worcestershire may require different approaches and solutions to be applied in different areas to meet the needs of those most at risk but ultimately the outcome achieved will be the same.

A North Worcestershire that is safe, secure and vibrant for all residents, businesses and visitors.

Sue Hanley
Chair, North Worcestershire Community Safety Partnership

About North Worcestershire



Map Of North Worcestershire Showing Individual Districts

Produced by Emma Clark on behalf of the R&I Unit, June 2012

(This information has been taken from a variety of data sources including the ONS, CACI, West Mercia Police, Department of Work & Pensions and the 2011 Census figures.)

North Worcestershire is located in the county of Worcestershire, in the West Midlands region. It comprises Bromsgrove, Redditch and Wyre Forest, with a mix of towns, villages and rural areas covering 178 square miles. The 2011 Census estimates North Worcestershire's population is approximately 275,826, with an estimated 115,997 households. By gender this can be broken down into 49% males and 51% females. The average age of someone living in North Worcestershire is 41.4 years, compared to an average age of 39.4 years in England and Wales.

In North Worcestershire 18% of the population is under 16, 63% are 16-64 and 19% are over 65 years of age. 92.1% of the population is classified as White British. The remaining 7.9% are from ethnic groups other than White British including White Other, Asian, African, Caribbean and Chinese.

Crime and Disorder

North Worcestershire is one of the safest parts of the country to live, work and visit. There has been a significant reduction in crime and anti-social behaviour over the years. However we recognise that there are perceptions that people may not feel reassured that this is necessarily the case. We know that there is always more that can be done to make people feel and be safer and to improve community wellbeing, particularly around supporting and protecting the most vulnerable people in our society.

North Worcestershire Community Safety Partnership

North Worcestershire CSP was formed in April 2013 and brings together and replaces the original CSPs in Bromsgrove, Redditch and Wyre Forest, which had been in place since 1998 as a result of the Crime and Disorder Act. The partnership covers the whole area within Bromsgrove, Redditch and Wyre Forest Councils' administrative boundaries.

The Crime and Disorder Act 1998, amended by the Police Reform Act 2002, makes it a statutory duty for certain organisations (known as responsible authorities) to work in partnership to develop strategies to reduce reoffending, tackle crime and disorder, anti social behaviour, alcohol and substance misuse and any other behaviour, which has a negative effect on the local environment.

The purpose of the North Worcestershire CSP is to provide a strategic and co-ordinated approach between agencies and communities across the area to address local community safety issues. Our vision is: 'Keeping North Worcestershire a safe place to live, work and visit.' This vision is underpinned by the following aims:

- To address the wider causes of crime and fear of crime
- To encourage community cohesion
- To reduce alcohol related harm
- To identify opportunities to reduce substance misuse
- To promote a community where domestic abuse and the fear of domestic abuse is not tolerated
- To promote a community where hate crime is unacceptable and those victims of hate crime are supported
- To provide effective, strategic leadership generating effective partnership working
- To deliver measurable outcomes

Statutory Requirements for CSPs

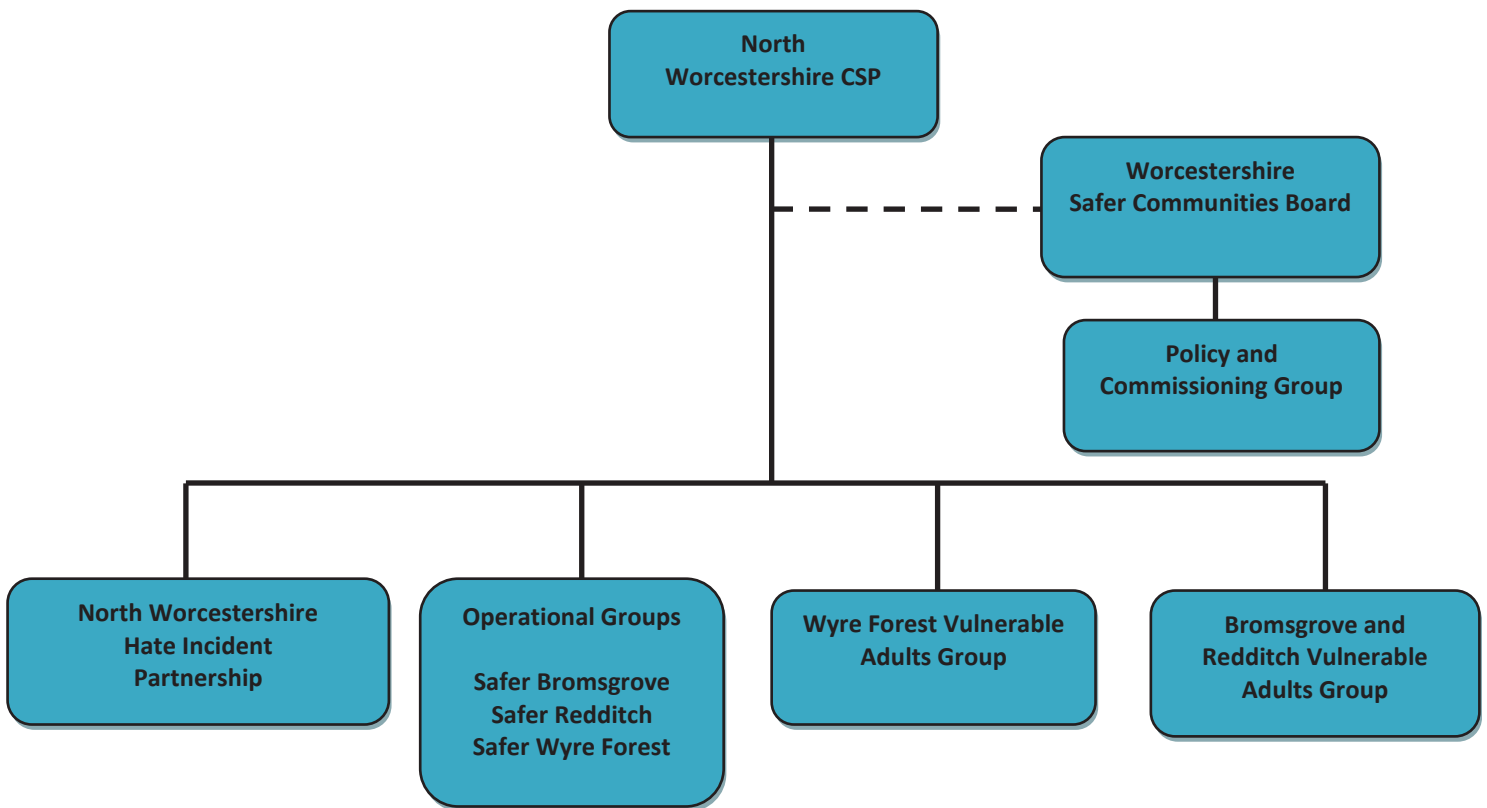
In recent years CSPs have been given much more freedom and flexibility regarding how they operate and manage performance. The statutory duties of CSPs are to:

- Undertake a Strategic Assessment and to produce a three year rolling Partnership Plan, revised annually.
- Hold one or more public meetings on an annual basis, to be attended by all responsible authorities at a senior level.
- Determine whether a Domestic Homicide Review should be conducted. The CSP Chair is responsible to the Home Office regarding this duty.

What is the Partnership Plan?

The plan is a three year document which is refreshed on an annual basis. The plan outlines the Partnership priorities, which are determined by a process called the Community Safety Strategic Assessment. In determining the priorities, the assessment considers a range of data and intelligence from different sources, such as police crime figures, anti social behaviour data and findings from public consultation.

Structure of the NWCSP



Safer Communities Board

In Worcestershire, community safety is strategically co-ordinated through the Safer Communities Board (SCB). The SCB also oversees a number of strategic groups including Domestic Abuse and Sexual Abuse Forums and the Integrated Offender Management (IOM) Strategic Group. North Worcestershire CSP is represented in all levels of the SCB and provides performance monitoring and reports to the SCB Policy and Commissioning Group.

North Worcestershire CSP

North Worcestershire CSP is a strategic group which brings together the responsible authorities and other partners across the area. It is responsible for monitoring and evaluating the implementation of the Partnership Plan, submitting bids for external funding to support delivery of the Partnership Plan, linking the work of the CSP to other bodies wherever required and identifying support required to progress delivery of the Partnership Plan.

North Worcestershire Hate Incident Partnership

The North Worcestershire Hate Incident Partnership aims to tackle all forms of hate crime and targeted harassment across North Worcestershire. The Partnership was established in July 2012 following a merger of Bromsgrove Hate Incident Partnership, Redditch Anti Harassment Partnership and Wyre Forest Hate Incident Partnership. It includes representatives from a number of statutory, voluntary and community organisations including Redditch Borough Council, Bromsgrove District Council, Wyre Forest District Council, Local Registered Social Landlords, West

Mercia Police, West Mercia Probation Trust, Youth Offending Teams and Victim Support.

The Partnership meets regularly to monitor reports received through the Hate Incident Reporting Scheme, discuss harassment cases that have been referred by local agencies and identify appropriate support to victims and witnesses. The Partnership also provides a forum for organisations to share best practice.

District Operational Groups

Delivery on the ground is at the heart of the North Worcestershire CSP and local operational groups known as Safer Bromsgrove, Safer Redditch and Safer Wyre Forest ensure that local issues and concerns remain at the centre of the new Partnership's priorities, projects and campaigns. The groups are responsible for delivering local actions from the Partnership Plan.

They discuss community safety issues brought to their attention and use a problem solving approach to identify effective actions to address these and allocate resources accordingly. They also promote public reassurance and engage with the media on different aspects of local community safety actions.

Vulnerable Adults Groups

Two groups exist in North Worcestershire, one for Bromsgrove and Redditch and one for Wyre Forest. They are co-ordinated by the respective councils for the areas. Multi agency panels come together to look at repeat concerns about an individual's vulnerability and behavioural issues in their local area.

Strategic Assessment

The Strategic Assessment is an analysis of the levels and patterns of crime and disorder and substance misuse in the area and the priorities the CSP should adopt to address those matters. In determining the priorities the CSP has also taken into account the government’s community safety priorities, those of the PCC and the countywide priorities as led by the Safer Communities Board.

	<i>West Mercia Police & Crime Plan Objectives</i>	<i>Worcestershire Community Safety Agreement Priorities</i>	<i>North Worcestershire Strategic Assessment</i>
<i>Priorities</i>	Reduce the volume of violent crime with an emphasis on addressing the harm caused by alcohol through partnership working	Drugs & Alcohol	Common themes identified across the areas are alcohol and the night time economy, young people and alcohol, drinking at home and domestic violence, drug related re-offending and violent crime and domestic abuse linked to drug and alcohol use.
	Reduce the harm caused by drugs with a focus on treatment and targeting those that cause the most harm		
	Work in partnership to protect the most vulnerable people in our society	Domestic Violence and Safeguarding Vulnerable People	Common themes across the areas are alcohol and drug users, young people prone to anti-social behaviour or alcohol/drug use, victims of domestic violence, vulnerable people subjected to targeted harassment, violence and domestic burglary and/or criminal damage.
	Reduce the volume of anti-social Behaviour incidents	Anti-social Behaviour	Common themes across the areas are youth and alcohol related anti-social behaviour, or harassment of vulnerable people. Negative perceptions of anti social behaviour. Operation StaySafe was a North Worcestershire operation to identify young people acting in an anti-social way or using alcohol or drugs. They were removed to a safe place where professionals can refer them and their guardians to the appropriate services
	Bring offenders to account and reducing re-offending	Reducing Re-offending	Linked to main offence types of; shoplifting, assaults, drug offences, and criminal damage. Differences amongst specific areas alter the focus in each district. Key priorities are to identify and understand the local problem in order to effectively target resources at combating the issue and align local needs with Integrated Offender Management aims at a county level
	To meet the needs of the Strategic Policing Requirement - Preventing Violent Extremism	Preventing Violent Extremism	Common theme across all local areas to raise awareness and promote training packages. Tackled according to County level guidance, little geographic variation

North Worcestershire Community Safety Partnership Priorities

Over recent years there has been a significant reduction in crime and disorder across North Worcestershire and in the majority of areas resident perceptions of crime, anti social behaviour and the safety of their local neighbourhood continues to improve. However, there are places in North Worcestershire where crime and the fear of crime are higher than in other locations. In order to build on the significant progress already made by the previous district partnerships, North Worcestershire CSP must continue to prioritise those issues of most concern to our local communities and target resources effectively. The issues that we plan to prioritise during 2013/16 are:

- To maintain low crime levels and improve public confidence
- Reducing the impact of alcohol and drugs misuse on communities
- Reducing Domestic Abuse and Safeguarding Vulnerable People
- Reducing re-offending
- Reducing Anti Social Behaviour

Priority: To maintain low crime levels and improve public confidence

- All crime and disorder whether serious crimes or low level incidents directly or indirectly impacts upon individuals and communities, affects health and wellbeing and can damage people's quality of life.
- Often the fear of crime affects people's well-being as much as their experience of actual crime as this often affected people's ability to play a full and active part in their communities and compromises the independence of vulnerable people.
- Reducing crime and anti-social behaviour requires a careful balance between reducing recorded incidents, encouraging reporting and addressing the negative perceptions of those who believe crime is worse than it really is.
- The Prevent Strategy continues to remain a priority within Worcestershire, the primary focus continues to be around training and awareness raising and ensuring that all partner agencies have access to training packages.

What was achieved in 2012/13?

- Progress continued to be made in reducing the levels of crime and disorder in North Worcestershire.
- Total recorded crime down by 19%, 3514 fewer offences for 2012/13. This continues the downward trend as seen in recent years.
- ASB incidents recorded by West Mercia Police reduced by 11.1%, 1548 fewer incidents for 2012/13.
- Successful delivery of a variety of district specific community safety projects and initiatives through established CSP operational group action plans.

- Effective Home Security Schemes, which support victims of crime and vulnerable people, continue in each district.

Objectives for 2013/14

- Deliver crime prevention initiatives to reduce crime.
- Co-ordinate community safety campaigns in response to key issues; to support crime reduction initiatives and reinforce positive messages about community safety in the area.
- Develop and implement a programme of community consultation and engagement to provide reassurance to communities and address fear of crime and community concerns.
- Prevent violent extremism by providing appropriate training and awareness raising packages to relevant audiences.

Measures 2013/14

- We will measure our success by monitoring and responding accordingly to:
 - Total Recorded Crime
 - Number of Dwelling Burglary offences
 - Number of Non dwelling burglary offences
 - Number of Theft from a motor vehicle offences
 - Number of Theft of a motor vehicle offences
 - Number of Robbery offences
 - Number of Shoplifting offences
 - Number of Prevent training packages delivered
 - Outcomes of the specific projects funded by the partnership
 - We will develop suitable measures regarding public confidence and reassurance

Priority: Reducing the impact of alcohol and drugs misuse on communities

- Drug and alcohol misuse can have negative social, economic, health and community safety impacts affecting users, their families and wider communities.
- Providing effective drug and alcohol treatment is important to support crime prevention and reoffending where substance misuse is an underlying problem.
- The night time economy (NTE), primarily consisting of pubs, night clubs and fast-food outlets is often a focus for alcohol related crime and disorder including violent offences, criminal damage and sexual assaults.
- Binge Drinking and 'Pre-Loading' (drinking at home or in a public place before going out) are drinking practices which can lead to a higher risk of crime or being victimised and also place an increased burden on public services such as policing, enforcement, transport and street cleansing.

What was achieved in 2012/13?

- Supported Street Pastors to be established in Bromsgrove and Wyre Forest.
- Supported and promoted targeted operations and key campaigns around responsible drinking throughout the year.
- Co-ordinated and implemented Redditch Town Centre improvements including improved CCTV, street lighting and landscaping.
- Support provided to local pub watch schemes and licensees associations.
- Welcomed CRI Pathways to Recovery services to North Worcestershire, providing services to reduce harm and promote recovery from substance misuse.

Objectives 2013/14

- Reduce the harmful effects of drugs and alcohol on the night time economy, on young people in public places, and on relationships.
- Continue to work with local Licensee Associations and Worcestershire Regulatory Services and to promote a safe, responsible Night Time Economy across North Worcestershire.
- Continue to work with and support CRI Pathways to Recovery and other local Drug and Alcohol Service providers to promote access to support for those seeking help for substance misuse.
- Promote and support educational campaigns to target proxy sales and other forms of inappropriate supply of alcohol to young people.

Measures 2013/14

- We will measure our success by monitoring and responding accordingly to:
 - The number of alcohol related recorded crimes
 - The number of alcohol related admissions for under 18s
 - The percentage of service users completing a Structured Alcohol Recovery Programme

- The percentage of service users completing a Structured Drug Recovery Programme
- The number of Night Time Economy related crimes occurring within town centre areas between 8pm and 5:59am
- The number of assault without injury offences
- The number of violence against the person with injury offences
- The outcomes of the specific projects funded by the partnership

Priority: Reducing Domestic Abuse and Safeguarding Vulnerable People

- Research shows that certain crimes such as those involving Domestic Abuse or Hate are often hidden crimes that are significantly under-reported for a variety of reasons. The Partnership is committed to ensuring that those people whose voices are not heard but are most in need should be a key focus of our attention.
- In the Government's national strategies to tackle Domestic Abuse and Sexual Violence, and Hate Crime, Community Safety Partnership's have a key role in supporting victims, preventing harm and bringing perpetrators to justice.
- Countywide Domestic Abuse strategies are developed and monitored through Worcestershire Forum against Domestic Abuse and the newly formed Worcestershire Sexual Violence Forum and CSP representation ensures local need and priorities are identified and resources targeted appropriately.
- North Worcestershire is leading the way in its approach to tackling Hate Crime, with its hugely successful Hate Incident Partnership. This dedicated forum has a key role in prevention work, increasing reporting and access to support and also improving operational responses to Hate Crime.

What was achieved in 2012/13?

- A number of successful awareness raising events across North Worcestershire as part of the 16 days of action domestic abuse campaign including a series of 'These Hands are not for Hurting Banners and a men's Heels walk in support of the national White Ribbon campaign.
- Co-ordinated seasonal publicity campaigns around domestic abuse, stalking and sexual violence.
- Successful merger to create North Worcestershire Hate Incident Partnership to support victims and witnesses of Hate Crime and targeted harassment.
- Development and implementation of a school Hate Crime education project providing awareness raising workshops to pupils at a variety of high schools.
- Developed and maintained support for Safeguarding Vulnerable Adults multi-agency groups across the area to monitor and manage complex cases with a high risk of harm to individuals and local communities.

Objectives 2013/14

- Identify individuals who may be vulnerable and assist them in accessing appropriate services.
- Protect vulnerable residents from becoming a victim of crime within their home (including burglary and domestic abuse).
- Reduce the harmful effects of hate crime through the work of the Hate Incident Partnership.
- Provide support to relevant multi agency forums set up to co-ordinate interventions and support for vulnerable and repeat victims, enforcement against offenders and actions in identified problem locations.

Measures 2013/14

- We will measure our success by monitoring and responding accordingly to:
 - The total number of Hate Crimes recorded
 - The number of Disability Hate Crimes recorded
 - The number of Race Hate Crimes recorded
 - The number of Religion Hate Crimes recorded
 - The number of Sexuality Hate Crime recorded
 - The number of Transgender Hate Crimes recorded
 - The number of Hate Crimes reported to the North Worcestershire Hate Incident Partnership
 - The number of crimes with Vulnerable Adult Marker
 - The number of new MARAC cases
 - The number of repeat MARAC cases
 - The percentage of total MARAC cases that were repeats
 - The total number of recorded crimes and incidents given a domestic abuse interest maker or action code
 - The number of recorded crimes defined as domestic abuse related
 - The number of incidents or calls to service defined as domestic abuse related
 - Attrition rates from IDVA service
 - The number of Domestic Violence Prevention Notices issued
 - The outcomes of the specific projects funded by the partnership

Priority: Reducing Re-offending

- A relatively small number of highly prolific offenders are responsible for a disproportionate amount of crime. These criminals cause immense damage to the lives of law-abiding citizens who live near them.
- The National Audit Office has estimated that the social and economic costs of reoffending by those released from short sentences alone are between £7-10 billion a year.
- Reducing Re-offending and Integrated Offender Management is delivered via countywide arrangements. However, the North Worcestershire Community Safety Partnership retains a statutory duty to ensure delivery and as such is part of the strategic group and governance arrangements for Integrated Offender Management.

What was achieved in 2012/13?

- Supported delivery of Worcestershire IOM Conference to raise awareness of IOM practices and support development of a countywide strategy.
- Supported countywide work into developing a needs assessment framework for IOM and embedding the work of the ODOC (One Day One Conversation - prolific and other priority offenders/integrated offender management operational teams).
- Supported IOM co-location in Redditch and Wyre Forest of police, probation and Pathways to Recovery.
- Maintained and developed strong links with Neighbourhood Watch Scheme including distribution and promotion of forensic property marking kits and other crime prevention tools.
- Co-ordinated multi-agency campaigns in response to emerging burglary “hot-spots” and seasonal risk factors. e.g., open windows during the summer period and pre-Christmas alerts to reduce prolific acquisitive crime.

Objectives 2013/14

- Identify and reduce the re-offending of those that cause the most harm in communities through Integrated Offender Management (IOM) processes.
- Maintain and develop “target hardening” services for vulnerable households and continue support for vehicle security messages across the area to reduce opportunities for prolific acquisitive crime.
- Ensure offenders are seen to contribute to the work of the CSPs through targeted community payback.

Measures 2013/14

- We will measure our success by monitoring and responding accordingly to:
 - The number of arrests IOM cohort (statutory)
 - The number of arrests IOM cohort (non-statutory)
 - The number of charges IOM cohort (statutory)
 - The number of charges IOM cohort (non statutory)
 - The number of community payback hours completed

Priority: Reducing Anti Social Behaviour

- Anti-social behaviour is identified in all consultations as an aspect of crime and disorder that causes great concern to local residents and it also places a significant burden on public resources.
- ASB can include behaviour such as excessive noise, graffiti, abandoned cars and threatening behaviour which can leave people feeling intimidated, angry or frightened. North Worcestershire CSP works with all its partners to reduce levels of ASB so that its residents can maintain a good quality of life.
- Although there have been significant reductions in ASB reported to the police, it is suggested that there is a certain amount that remains unreported.
- Results from November 2012 Viewpoint Survey show Perceptions of ASB as a problem at 18.9%. This is a slight deterioration compared to results from November 2011 at 16.9%. Consideration needs to be given to reducing any gap between perceptions and actual issues and targeting those areas where under-reporting may exist.

What was achieved in 2012/13?

- Through Operation StaySafe, identified and promoted referral and intervention processes to reduce the number of young people who are repeatedly involved in antisocial behaviour.
- Supported and promoted a variety of projects, initiatives and events to reduce youth related ASB, such as restorative resolutions, substance misuse referrals, diversionary and preventative workshops in schools and youth clubs.
- Co-ordinated and promoted enforcement and education activity through multi agency forums to target locations where alcohol related anti social behaviour is a problem.
- Provided support via multi agency forums for countywide processes to re-structure delivery of Positive Activities, Early Help and Stronger Families services across Worcestershire.

Objectives 2013/14

- Reduce the harm caused to individuals and communities by anti-social behaviour.
- Tackle youth related anti-social behaviour by supporting the provision of targeted and non-targeted positive activities.
- Protect repeat victims of anti-social behaviour.
- Recognise the positive contributions young people make to their local communities.

Measures 2013/14

- We will measure our success by monitoring and responding accordingly to:
 - The total number of ASB incidents recorded
 - The number of ASB environmental incidents recorded
 - The number of ASB nuisance incidents recorded
 - The number of ASB personal incidents recorded

- The number of Youth ASB incidents recorded
- The number of Alcohol ASB incidents recorded
- The percentage of residents who perceive ASB to be a problem in their area
- The outcomes of the specific projects funded by the partnership

Action Plans 2013/14

Priority: To maintain low crime levels and improve public confidence			
Objectives:			
<ul style="list-style-type: none"> ▪ Deliver crime prevention initiatives to reduce crime. ▪ Co-ordinate community safety campaigns in response to key issues; to support crime reduction initiatives and reinforce positive messages about community safety in the area. ▪ Develop and implement a programme of community consultation and engagement to provide reassurance to communities and address fear of crime and community concerns. ▪ Prevent violent extremism by providing appropriate training and awareness raising packages to relevant audiences. 			
Action	Responsibility	Target Date	Resources
Develop and implement a range of partnership actions to improve confidence and change negative perceptions	Operational Groups	March 2014	PCC Grant Partner contributions Officer time
Continue to develop and keep updated the NWCSF website	Community Safety Teams	March 2014	PCC Grant Partner contributions Officer time
Promote activities to advise the public on crime prevention by delivering campaigns in response to trends	Operational Groups	March 2014	PCC Grant Partner contributions Officer time
Support the implementation of the recommendations from the Counter Terrorism Local Profiles	Worcestershire Prevent Group	March 2014	Officer time

Priority: Reducing the impact of alcohol and drugs misuse on communities			
Objectives:			
<ul style="list-style-type: none"> ▪ Reduce the harmful effects of drugs and alcohol on the night time economy, on young people in public places, and on relationships. ▪ Continue to work with local Licensee Associations and Worcestershire Regulatory Services and to promote a safe, responsible Night Time Economy across North Worcestershire. ▪ Continue to work with and support CRI Pathways to Recovery and other local Drug and Alcohol Service providers to promote access to support for those seeking help for substance misuse. ▪ Promote and support educational campaigns to target proxy sales and other forms of inappropriate supply of alcohol to young people. 			
Action	Responsibility	Target Date	Resources
Continue to support Street Pastors in local areas	Operational Groups	March 2014	Officer time
Develop and implement a range of partnership activities to address alcohol related crime and disorder linking in with countywide strategies	Operational Groups	March 2014	PCC Grant Partner contributions Officer time
Promote activities to advise the public on crime prevention by delivering campaigns in response to trends	NWCSP Board Operational Groups	March 2014	PCC Grant Partner contributions Officer time
Work in partnership and continue to engage with organisations that can have a positive impact on the night time economy	NWCSP Board Operational Groups	March 2014	PCC Grant Partner contributions Officer time
Work in partnership and support organisations that work to reduce the harm caused by substance misuse, including Novel Psychoactive Substances	NWCSP Board Operational Groups	March 2014	PCC Grant Partner contributions Officer time

Priority: Reducing Domestic Abuse and Safeguarding Vulnerable People			
Objectives:			
<ul style="list-style-type: none"> ▪ Identify individuals who may be vulnerable and assist them in accessing appropriate services. ▪ Protect vulnerable residents from becoming a victim of crime within their home (including burglary and domestic abuse). ▪ Reduce the harmful effects of hate crime through the work of the Hate Incident Partnership. ▪ Provide support to relevant multi agency forums set up to co-ordinate interventions and support for vulnerable and repeat victims, enforcement against offenders and actions in identified problem locations. 			
Action	Responsibility	Target Date	Resources
Continue to play an active role in the Worcestershire Domestic Abuse and Sexual Violence Forums and implement relevant actions at a local level	NWCSP Board Operational Groups	March 2014	PCC Grant Partner contributions Officer time
Develop and implement a range of partnership activities to address alcohol related crime and disorder linking in with countywide strategies	Operational Groups	March 2014	PCC Grant Partner contributions Officer time
Continue to support and develop the Vulnerable Adults Groups	NWCSP Board Wyre Forest District Council Redditch Borough Council	March 2014	Officer time
Continue to support and promote the Hate Incident Partnership	NWHIP	March 2014	PCC Grant Partner contributions Officer time
Continue to operate Home Security Scheme and Sanctuary Projects and look at where potential efficiencies and savings can be made across North Worcestershire	Operational Groups	March 2014	PCC Grant Partner contributions Officer time

Priority: Reducing Anti Social Behaviour			
Objectives:			
<ul style="list-style-type: none"> ▪ Reduce the harm caused to individuals and communities by anti-social behaviour. ▪ Tackle youth related anti-social behaviour by supporting the provision of targeted and non-targeted positive activities. ▪ Protect repeat victims of anti-social behaviour. ▪ Recognise the positive contributions young people make to their local communities. 			
Action	Responsibility	Target Date	Resources
Develop and implement a range of Partnership Activities to address ASB	Operational Groups	March 2014	PCC Grant Partner contributions Officer time
Develop and implement a range of activities regarding perceptions of ASB	Operational Groups	March 2014	PCC Grant Partner contributions Officer time
Identify and tackle ASB hotspots in order to conduct targeted initiatives	Operational Groups	March 2014	PCC Grant Partner contributions Officer time
Support the development of Early Help and Stronger Families Programmes	NWCSP	March 2014	Officer time
Continue to work with youth provision organisations including both statutory and voluntary sectors	Operational Groups	March 2014	Officer time PCC Grant

Priority: Reducing Re-offending

Objectives:

- Identify and reduce the re-offending of those that cause the most harm in communities through Integrated Offender Management (IOM) processes.
- Maintain and develop “target hardening” services for vulnerable households and continue support for vehicle security messages across the area to reduce opportunities for prolific acquisitive crime.
- Ensure offenders are seen to contribute to the work of the CSPs through targeted community payback.

Action	Responsibility	Target Date	Resources
Continue to develop and promote local crime prevention projects and initiatives	Operational Groups	March 2014	Officer time PCC Grant
To consider developing mechanisms to enable the community to access community payback	NWCSP	March 2014	Officer time
Support the delivery of IOM and associated activities through participation in the IOM Strategic Group	NWCSP	March 2014	Officer time

Partnership Changes and Challenges

Police and Crime Commissioner

In late 2012 the West Mercia Police Authority was decommissioned and replaced by a new Police and Crime Commissioner (PCC), who was elected in November 2012. The PCC is directly accountable to voters every four years and is scrutinised by a panel made up of other elected and independent members (Police Crime Panel). The PCC has statutory duties for holding the Chief Constable to account for the delivery of efficient and effective service through the setting of a five year Police and Crime Plan, and oversees value for money and performance. The PCC is not a responsible authority within the partnership but there is a reciprocal duty for the CSP and PCC to co-operate. The partnership will work closely with the PCC, his office and other partners across the West Mercia region to achieve this duty.

We have seen a significant change in the way funding is allocated, as funding that was previously allocated to CSPs has been transferred to the PCC. This year we have been successful in our bids to the PCC for the same levels of funding that we received in 2012/13. For future year's funding the bidding process will be more challenging as the funding will not be ring-fenced and is likely to be available to more than just CSPs to bid for, as was the case this year. In 2013/14 it is important that we evaluate everything that we do and continue to demonstrate our effectiveness and value for money.

Significant changes for Partners

There have been a number of significant changes within each of our partner organisations due to amendments in legislation, budget reductions and changes in resources. In 2012 a West Mercia Youth Offending Service was launched, it is managed on a day-to-day basis by West Mercia Probation Trust.

Significant changes are also on the horizon for probation services across England and Wales, with the government having published the consultation paper 'Transforming Rehabilitation' which describes proposals for reforming the delivery of offender services in the community.

West Mercia Police has formed a strategic alliance with Warwickshire Police, which looks to ensure that police services are delivered in an efficient and effective way; these arrangements are continuing to be developed and implemented.

Changes to Public Health

On 1 April 2013, Clinical Commissioning Groups became responsible authorities, replacing the former Primary Care Trust. There are two CCGs in North Worcestershire, Redditch and Bromsgrove CCG and Wyre Forest CCG

The Worcestershire Health and Wellbeing Board (HWBB) became a statutory body from 1 April. The Board's strategy and Public Health Outcomes Framework has clear links to the community safety and criminal justice agenda, which through our representation on the Safer Communities Board we will work to support their achievement.

Under the Health and Social Care Act 2012, from 1 April 2013, Public Health functions became the responsibility of the top tier Local Authority and transferred to Worcestershire County Council. A new Health and Wellbeing Team, located

within the newly created Adult Services and Health directorate, has been set up at Worcestershire County Council which will deliver community safety functions including the continued co-ordination of the Safer Communities Board.

This year we have also seen changes within the drugs and alcohol arena with Worcestershire’s Drug and Alcohol Action Team being disbanded and the functions being absorbed within the Adult Services and Health directorate.

Monitoring progress

Measures of success help us monitor and track progress against targets and stated outcomes for each area. The action plans in this document describe the work planned to achieve outcomes. While the action plans presented only provide brief descriptions of the work planned, they are backed up by processes which monitor outputs, targets, milestones and timescales, and who is responsible for individual actions. Progress on key performance indicators related to the work in the Plan is reported to the NWCSF and the Safer Communities Board through the Policy and Commissioning Group.

The partnership will receive regular scrutiny from the Overview and Scrutiny Committees established within each of the district and borough councils. The purpose of the committees is to review, scrutinise and make reports or recommendations to the responsible authorities of the CSP. These committees enable councils to hold the responsible authorities to account for local action and local public spending. They are a requirement for councils under the Local Government and Public Involvement in Health Act 2007.

Resources

The North Worcestershire CSP has been awarded a grant from the PCC to deliver its plan. The funding will be used as outlined below and is for a one year period:

Initiative	Amount
North Worcestershire Hate Incident Partnership	£3,000
Community Engagement, Consultation and Communications	£5,000
North Worcestershire Home Security Projects	£6,000
North Worcestershire CSP Analyst	£30,000
Safer Bromsgrove Tasking Group	£25,994
Safer Redditch Tasking Group	£39,810
Safer Wyre Forest Tasking Group	£40,653
Total	£150,457

Section 17 Responsibilities

Community Safety Partnerships were established under the Crime and Disorder Act 1998 and Section 17 of this act is aimed at making the vital work of reducing crime a focus across the wide range of local services that authorities provide, putting community safety at the heart of local decision-making.

Section 17 states that:

“Without prejudice to any other obligations imposed upon it, it shall be the duty of each authority to exercise its various functions with due regard to the likely effect of the exercise of those functions on, and the need to do all it reasonably can to prevent crime and disorder in its area.”

This recognises that each of the responsible authorities provides a wide and varied range of services and functions within the community. As the level and impact of crime can be influenced by the decisions and actions taken in the day-to-day activities of these local bodies, the act places a duty on these authorities to do all they can to reasonably prevent crime, disorder and anti-social behaviour in their area.

With changes to grant provision, reducing resources and competing priorities, Section 17 can provide a welcome opportunity for key partners to review core functions and service provision and ensure that community safety is embedded as a core aim in every service delivered. Innovative and creative use of mainstream budgets to meet multiple aims that include crime and disorder reduction and prevention can directly benefit organisations, the Partnership and local communities by reducing duplicated effort and cost, whilst improving public services to create safer neighbourhoods.

Community Engagement

The partnership will continually seek to improve its engagement with the community. The partnership will publicise its work and raise awareness about the role of the partnership. We are committed to actively engaging our communities and responding to concerns, working together to resolve issues.

Communications Strategy

Channels of Communication

- It is suggested that the current communications channels (internal and external) available across North Worcestershire are mapped by the Community Safety Managers or equivalent across Bromsgrove, Redditch and Wyre Forest.
- The North Worcestershire CSP will agree the most appropriate communications channels to transmit key messages to its audiences.
- Possible channels include:
 - Publications e.g. newspapers, internal newsletters
 - Annual reports, business plans, research and evaluation reports
 - Media including TV and radio
 - Websites
 - Events
 - Word of mouth, public meetings, presentations, focus groups
 - Marketing materials e.g. leaflets, posters and brochures

Roles and Responsibilities

- In the interest of consistency and professionalism all communications will be co-ordinated through the Community Safety Managers, or equivalent, in conjunction with the Chairperson of the North Worcestershire CSP and/or the Chairperson of the Operational Groups, where appropriate.
- Community Safety Managers, or equivalent, will ensure that relevant partner agencies are given the opportunity to comment on all communications before general release. Partners will be asked to ensure they comment within a timely manner to ensure the release meets press deadlines.
- Partners will agree to share information and knowledge that may be of mutual benefit.
- Partners will agree to keep each other fully informed of any issues which may affect each other, for example press interest in a particular story.
- Partners will agree to notify each other of any campaigns, publications etc. which may be of mutual interest.

Press Releases

North Worcestershire

- All North Worcestershire CSP press releases must include a short quote from the Chairperson and, where appropriate and beneficial, additional quotes should be included from key partners. The NWCSP logo should be used in conjunction with the lead agency's logo or branding.
- All press releases must be signed off by the Chairperson or the Vice Chairperson in advance of circulation for release.

- A draft copy of the press release should be sent to the Community Safety Managers, or equivalent, who will liaise with the North Worcestershire CSP Chairperson for endorsement.
- The Community Safety Managers, or equivalent, will then advise the partner(s) issuing the press release of any comments or additions that the Chairperson may wish to be considered for inclusion.
- Following any required revision, the partner(s) can then forward the press release to the local media, ensuring the Chairperson is advised of any photo-call opportunity.
- Press releases must be issued on North Worcestershire CSP headed paper.
- A copy of the issued press release must be given to the Community Safety Managers, or equivalent, for file and adult purposes.

District wide

- The Operational Groups may issue press releases where a project has solely been delivered in their respective district. Where this is the case a press release must include a quote from the North Worcestershire CSP Chairperson and the Operational Group Chairperson. Both parties must have signed off the press release before its circulation. The 'Safer Bromsgrove/Redditch/Wyre Forest' logos should be used in conjunction with the NWCSF logo/branding.
- All press releases must be signed off by the Chairperson or the Vice Chairperson in advance of circulation for release.
- A draft copy of the press release should be sent to the Community Safety Managers or equivalent who will liaise with the North Worcestershire CSP Chairperson and Operational Group Chairperson for endorsement.
- The Community Safety Managers or equivalent will then advise the partner(s) issuing the press release of any comments or additions that the Chairperson may wish to be considered for inclusion.
- Following any required revision, the partner(s) can then forward the press release to the local media, ensuring the Chairperson(s) are advised of any photo-call opportunity.
- Press releases must be issued on North Worcestershire CSP headed paper.
- A copy of the issued press release must be given to the Community Safety Managers or equivalent for file and adult purposes

Resources

- The North Worcestershire CSP will agree the allocation of pooled resources for joint CSP communications activity. It is anticipated that North Worcestershire CSP projects will be identified at the beginning of the financial year, which will support forward planning of communications related activity.

Branding and Marketing

- The North Worcestershire CSP has developed a logo to be used for all branding related activities.
- Operational Groups will use the North Worcestershire CSP logo in conjunction with the Safer Bromsgrove/Redditch/Wyre Forest logo, as appropriate.

Monitoring and Evaluation

- A review of the communications strategy will be undertaken on an annual basis.
- All communications activities will be collated and reported on a quarterly basis to the North Worcestershire CSP.
- A process to evaluate the effectiveness of communication activities will be developed.

Logos

North Worcestershire



Operational Groups



Partners

This section lists the organisations that are members of the NWCSP. Please follow the links for more information.

Responsible Authorities

Bromsgrove District Council	www.bromsgrove.gov.uk
Hereford and Worcester Fire and Rescue Authority	http://www.hwfire.org.uk
Redditch and Bromsgrove Clinical Commissioning Group	http://www.redditchandbromsgroveccg.nhs.uk
Redditch Borough Council	www.redditchbc.gov.uk
West Mercia Police	www.westmercia.police.uk
West Mercia Probation Trust	www.westmerciaprobation.org.uk
Worcestershire County Council	www.worcestershire.gov.uk
Wyre Forest Clinical Commissioning Group	http://www.wyreforestccg.nhs.uk
Wyre Forest District Council	www.wyreforestdc.gov.uk

Co-opted or Invited to Participate

Magistrates Bench Chairs - Bromsgrove and Redditch, Kidderminster	www.justice.gov.uk
Chairs of the Operational Groups	See www.nwcsp.org
Chair of the North Worcestershire Hate Incident Partnership	See www.nwcsp.org
West Mercia Youth Offending Service	
HMP Hewell	www.justice.gov.uk
Portfolio Holders for Community Safety at Bromsgrove, Redditch and Wyre Forest Councils	www.bromsgrove.gov.uk www.redditchbc.gov.uk www.wyreforestdc.gov.uk
Victim Support	www.victimsupport.org.uk
Worcestershire County Association of Local Councils	www.worcscalc.org.uk
Worcestershire Regulatory Services	www.worcsregservices.gov.uk

Contact Us

Website

www.nwcsp.org

Postal Address

Chair of NWCSP
c/o Redditch Borough Council
Redditch Town Hall
Redditch
Worcestershire
B98 9AH

By virtue of paragraph(s) 7 of Part 1 of Schedule 12A
of the Local Government Act 1972.

Document is Restricted

