



Crime and Disorder Scrutiny Panel

Wednesday, 22nd
March, 2017
6.30 pm

Committee Room Two
Town Hall
Redditch



www.redditchbc.gov.uk

If you have any queries on this Agenda or any of the decisions taken or wish to exercise any of the above rights of access to information, please contact

**Jess Bayley
Democratic Services Officer**

**Town Hall, Walter Stranz Square, Redditch, B98 8AH
Tel: 01527 64252 (Ext. 3268) Fax: (01527) 65216
e.mail: jess.bayley@bromsgroveandredditch.gov.uk /**



Crime and Disorder Scrutiny

Panel

Wednesday, 22nd March, 2017

6.30 pm

Committee Room 2 Town Hall

Agenda

Membership:

Cllrs: Matthew Dormer (Chair) Paul Swansborough
 Wanda King Nina Wood-Ford
 Jane Potter

<p>1. Apologies and named substitutes</p>	<p>To receive apologies for absence and details of any Councillor nominated to attend this meeting in place of a member of this Committee.</p>
<p>2. Declarations of interest and of Party Whip</p>	<p>To invite Councillors to declare any Disclosable Pecuniary Interests or Other Disclosable Interests they may have in items on the agenda, and to confirm the nature of those interests, and any Party Whip.</p>
<p>3. Minutes (Pages 1 - 6)</p>	<p>To confirm the minutes of the previous meeting of the Crime and Disorder Scrutiny Panel as a correct record. (Minutes attached). (No Specific Ward Relevance)</p>
<p>4. North Worcestershire Community Safety Partnership - Update Report (Pages 7 - 20) Judith Willis, Head of Community Services</p>	<p>To consider an update on the work of the North Worcestershire Community Safety Partnership in the Borough of Redditch. (Report attached) (No Specific Ward Relevance)</p>
<p>5. Work Programme (Pages 21 - 22)</p>	<p>To consider the content of the Panel's Work Programme. (Work programme attached) (No Specific Ward Relevance)</p>

Crime and Disorder Scrutiny

Panel

Wednesday, 22nd March, 2017

6. Exclusion of the Press and Public

Should it be necessary, in the opinion of the Borough Director, during the course of the meeting to consider excluding the public from the meeting on the grounds that exempt information is likely to be divulged, it may be necessary to move the following resolution:

“That, under S.100 (A) (4) of the Local Government Act 1972, the public be excluded from the meeting for the following matter(s) on the grounds that it/they involve(s) the likely disclosure of exempt information as defined in the relevant paragraphs (to be specified) of Part 1 of Schedule 12 (A) of the said Act”.

These paragraphs are as follows:

Subject to the “public interest” test, information relating to:

- Para 1 – any individual;
- Para 2 – the identity of any individual;
- Para 3 – financial or business affairs;
- Para 4 – labour relations matters;
- Para 5 – legal professional privilege;
- Para 6 – a notice, order or direction;
- Para 7 – the prevention, investigation or prosecution of crime;

and may need to be considered as ‘exempt’.



Crime and Disorder Scrutiny Panel

Wednesday, 16 September
2015

MINUTES

Present:

Councillor Gareth Prosser (Chair), and Councillors Jane Potter, Paul Swansborough and Nina Wood-Ford

Also Present:

Councillor Yvonne Smith (Portfolio holder for Community Safety and Regulatory Services)

Officers:

Bev Houghton and Judith Willis

Democratic Services Officer:

Jess Bayley

1. APOLOGIES AND NAMED SUBSTITUTES

There were no apologies for absence.

2. DECLARATIONS OF INTEREST AND OF PARTY WHIP

There were no declarations of interest nor of any party whip.

3. MINUTES

RESOLVED that

the minutes of the meeting of the Crime and Disorder Scrutiny Panel held on Wednesday 29th October 2014 be approved as a correct record and signed by the Chair.

4. NORTH WORCESTERSHIRE COMMUNITY SAFETY PARTNERSHIP - UPDATE REPORT

Officers presented a briefing note updating Members on the work of the North Worcestershire Community Safety Partnership (NWCSP)

.....
Chair

Crime and Disorder

Scrutiny

Panel

Wednesday, 16 September 2015

in the last 12 months. During the presentation of this report the following key points were highlighted for Members' consideration:

- A review of Community Safety Partnership arrangements in Worcestershire was being undertaken. The aim of the review was to determine whether responsibilities and lines of accountability were clear.
- The review would also provide an opportunity to assess how resilient partners were and the potential for the partnership to adapt in a changing legislative environment.
- The contents of the NWCSP plan had been updated at the latest meeting of the Partnership Board that day and a copy of the new plan would be circulated for the consideration of relevant partners.
- In previous years the NWCSP had to apply to the West Mercia Police and Crime Commissioner (PCC) for grant funding. However, partnerships in Worcestershire were working with the Office of the PCC to develop a new commissioning model which would influence future funding settlements.
- An initial presentation from the Office of the PCC to the partnership board had addressed the approach that they would be adopting to commissioning which would focus on the evidence basis for funding projects.
- A number of multi-occupied block security schemes had been delivered in various locations such as Winyates district centre. Officers were aiming to deliver further security schemes in Auxerre House and in the three storey flats in Batchley in due course.
- The alley-gates that had been installed on Unicorn Hill had helped to deter anti-social behaviour as intended and had been welcomed by local businesses.
- The Redditch Roadway Arts project had had a number of successful outcomes. The works undertaken for this project needed to be delivered in appropriate weather conditions and therefore the work was mainly seasonal.
- A number of specialist watch systems exist in the Borough such as Pub Watch and Shop Watch and through the Business and Rural Crime plan other systems such as Farm Watch and Horse Watch, to protect horses and expensive equine equipment, were being explored with the aim of working with specific communities to help to reduce crime.
- There had been significant interest amongst staff in participating in Introduction to Crime Prevention Training. As these sessions had been oversubscribed the Community Safety team was aiming to deliver further sessions in 2016.
- There continued to be under reporting of hate crimes. In some cases this was because people were not always aware that an

Crime and Disorder

Scrutiny

Panel

Wednesday, 16 September 2015

incident was a hate crime though in other cases victims did not feel comfortable reporting hate crimes.

- Funding had been provided for events to be run as part of Hate Crime Awareness Week. Elected Members and partners would be invited to attend an event at Hindlip Hall as part of this event and transport would be provided to enable invitees to attend.
- The Worcestershire Safe Places Scheme, involving provision of safe locations, such as the Town Hall, to vulnerable and distressed people, had already been introduced in Redditch, Worcester City and Wyre Forest. The scheme would be extended across the rest of the county in 2016.

The following additional points were discussed by Members during consideration of this item:

- Arrangements for reporting the outcomes of meetings of the West Mercia Police and Crime Panel to Members in Redditch. Councillor Smith, as the Council's representative on the Panel, explained that she reported back to the Executive Committee and Council as and when appropriate.
- The reasons why the review of community safety partnerships in the county had been launched at this time. Officers explained that the NWCSPP was the first partnership to be shared between areas and it had always been intended that a review would take place to assess the outcomes of partnership working across three district areas. Members requested a copy of the review once this had been finalised so that they could assess the outcomes of the exercise.
- The allocation of funding for the CCTV systems across the three districts. Officers clarified that the funding was allocated in equal shares. In the first year this funding had had to be used for capital expenditure but in the second year it was proposed that the funds be used to support revenue costs.
- The location of CCTV cameras in the Borough was also discussed. Members were advised that there were CCTV cameras in a variety of locations across the Borough, though some in the town centre were operated by the Kingfisher Shopping Centre.
- The monitoring system for the CCTV team, who managed operations for Redditch, Bromsgrove and Wyre Forest.
- The provision of crime prevention design advice for planning applications by the Community Safety Officers. Officers confirmed that at present the team did not charge to provide this advice to developers though this was something that could potentially be introduced in future.
- The ability of the Council to recoup costs involved in undertaking improvement works on derelict buildings. In the case of St

Crime and Disorder

Scrutiny

Panel

Wednesday, 16 September 2015

Gregory's Church in Winyates Members were advised that the Council would recover these costs as part of the sale of the property.

- The changes to the bus route operating on Far Moor Lane meant that one of the bus shelters installed as part of the Redditch Roadway Arts project on that road was no longer in use. To ensure that this asset was utilised Members requested that Officers investigate the potential to relocate this bus shelter so that it could be used once again by passengers.
- Members expressed an interest in the profile of business and rural crime in Redditch that was in the process of being developed. Questions were raised as to when this profile would be finalised and the findings made available for the consideration of interested partners including elected Members.
- The Panel also expressed an interest in the revised advice sheet on unauthorised encampments that was in the process of being developed and requested that the contents be circulated for Members' consideration once finalised.
- The focus of the Rural Watch website. Officers explained that the website was intended to be a communications tool for people living in isolated communities and would provide information about how to protect properties and disseminate information about burglaries in rural areas.
- The potential for elected Members to receive basic crime prevention training once training has been delivered to relevant Council Officers.
- The funding used to deliver security schemes in multi-occupied blocks. Officers advised that the majority of schemes in Council blocks were funded through the Housing Revenue Account (HRA), although the security scheme in Winyates had been financed using funds from the Area of Highest Needs project.
- The complex issues involved in introducing security schemes on blocks containing both Council housing and owner occupied properties. Members noted that there were specific needs for security enhancement works on some of these buildings and it was suggested that further investigation of this matter could have a beneficial impact on the quality of life for residents living in these properties.
- The process used to monitor the effectiveness of Community Safety projects. Members were advised that the outcomes of specific projects were monitored. In the long-term the monitoring process would be enhanced once a new data analyst could be recruited into the Community Safety team as this officer could access useful data.
- The support provided by the NWCSP to the local lesbian, gay, bisexual and transgender (LGB&T) community. Officers explained that support was provided to the LGB&T community

Crime and Disorder

Scrutiny

Panel

Wednesday, 16 September 2015

through the work of the North Worcestershire Hate Incident Partnership and a member of the Council's Community Safety team attended meetings of the Worcestershire LGB&T Hate Crime Forum.

- The involvement of community safety in any future development work within the district centres. Members were assured that the Community Safety team would be consulted as and when any developments occurred.

Following these discussions it was

RESOLVED that

subject to noting Members' comments as detailed in the preamble above, the report be noted.

The Meeting commenced at 7.00 pm
and closed at 8.19 pm



Elected Member BRIEFING NOTE

To: Crime and Disorder Scrutiny Panel From: Bev Houghton
Dept: Community Safety
Tel: Ext No: 3194

CC: Cllr Yvonne Smith – Portfolio Holder for Community Services
Sue Hanley – Deputy Chief Executive
Judith Willis – Head of Community Services

North Worcestershire Community Safety Partnership 2016/17

1. Summary

1.1 This report provides an update on the progress of the North Worcestershire Community Safety Partnership (NWCSP) during 2016/17.

2. Background

2.1 NWCSP has been in existence since May 2013, following the merger of the three district CSPs in Bromsgrove, Redditch and Wyre Forest. The community safety teams have continued to remain with the respective local authorities.

2.2 Local representation on NWCSP is fulfilled through a number of positions. Redditch Borough Council's Elected Member representative is the Portfolio Holder for Community Safety & Regulatory Services, Councillor Yvonne Smith. Sue Hanley, Deputy Chief Executive is the Council's Responsible Authority representative and is also Chair of NWCSP. The Community Safety Manager provides support to NWCSP and is also Chair of the Safer Redditch Group.

2.3 Scrutiny arrangements for the CSP currently remain unchanged with local authorities having a statutory duty to scrutinise the work of its local CSP, under Section 19 of the Police and Justice Act 2006.

2.4 Alongside the relationship the Council has with the CSP, there is also a direct role in holding the West Mercia Police and Crime Commissioner (PCC) to account through the West Mercia Police and Crime Panel (PCP). Redditch Borough Council's representative on the PCP is the Portfolio Holder for Community Safety, Councillor Yvonne Smith.

3. Current Position

3.1 Partnership Structure

District Operational Groups are identified as Safer District Groups and are known as Safer Bromsgrove Group, Safer Redditch Group and Safer Wyre

Forest Group. There are also a number of other sub-groups as illustrated below.

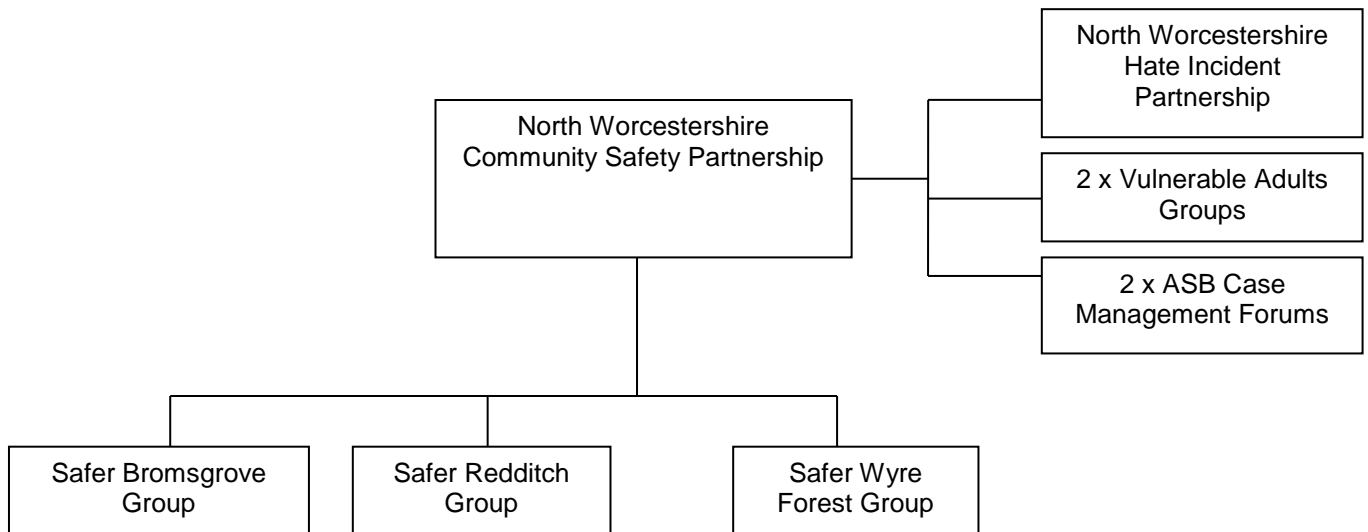


Diagram 1: Structure of the North Worcestershire Community Safety Partnership

3.2 Strategic Assessment and Partnership Plan

NWCSP has a statutory duty to produce a three year rolling plan outlining how the Partnership intends to address key crime and community safety priorities, as identified through its annual Strategic Assessment. A list of the statutory and invited partners is available at **Appendix One**.

The Strategic Assessment gathers research, evidence and intelligence from national and regional sources, as well as drawing on professional expertise of those working locally. It is designed to be a point of reference and guidance to resource community safety initiatives among partner agencies across the area.

The Strategic Assessment is currently being developed ahead of a refreshed Partnership Plan being produced for 2017-20. The draft Strategic Assessment has already identified priorities for the partnership to focus on and these were agreed in December 2016. They are:

- I. Reducing Violence and abuse: including sexual offending and domestic abuse (to include Child Sexual Exploitation (CSE))
- II. Reducing Theft and Acquisitive crime: including shoplifting, thefts and burglaries
- III. Reducing Anti-Social Behaviour, Damage and Nuisance: including criminal damage, environmental issues and deliberate fires/arson
- IV. Protecting vulnerable communities: including harassment and threatening behaviour
- V. Reducing Offending and Drug and Alcohol Misuse are cross cutting themes which impact on all priorities

The Strategic Assessment will provide detailed analysis on each of these priorities, identifying locations, victims and offenders and the Partnership Plan will detail how the Community Safety Partnership will tackle its priorities. The Plan will include details on what outcomes the Partnership wishes to achieve, and the clear actions that will be undertaken in each district and across North Worcestershire, including how performance will be measured.

3.3 John Campion, West Mercia Police and Crime Commissioner

John Campion was elected as the Police and Crime Commissioner for West Mercia on 5th May 2016. The PCC has a duty to co-operate with CSPs to reduce crime and disorder and there is a reciprocal duty on CSPs to collaborate with the PCC. The PCC and the CSP must have regard to each other's priorities within their respective plans. The PCC's Safer West Mercia Plan was published in October 2016 and his vision will be reflected in the NWCSP Partnership Plan, which the partnership will contribute to delivering at a local level. The PCC's vision is focused on four key areas:

- I. Building a More Secure West Mercia: CSE, domestic abuse, vulnerable people, sexual offences, ASB, drugs and alcohol, reducing reoffending, road safety
- II. Reassuring West Mercia's Communities: feeling safe as well as being safe, engaging with the public, protecting from cyber-crime, making voices heard around rural crime
- III. Putting Victims and Witnesses First
- IV. Reforming West Mercia

Tracey Onslow was appointed as Deputy Police and Crime Commissioner in July 2016. Her role is to represent the PCC in communities across West Mercia. Her portfolio includes cyber, rural and business crime, victims' services and commissioning. CSPs will be working closely with the Deputy PCC as the commissioning model is developed and put into operation. To assist with the development, CSPs have been advised that the Deputy PCC is undertaking a review of CSP funding with a focus on outcomes.

3.4 Grant Funding from the PCC 2017/18

CSPs in West Mercia have been advised of their respective funding allocations for 2017/18 but were still asked to apply to the PCC with details of how each CSP would like to use their allocation. On 7th February 2017, an extraordinary meeting of the NWCSP was held to agree which projects and areas of work partners would wish money to be allocated to. The funding available is based on previous year's allocations and the table attached at **Appendix Two** shows projects that NWCSP has agreed to deliver using their funding allocation. It should be noted that this funding is only for financial year 2017/18 and NWCSP will be advised in March if its applications have been agreed.

On behalf of the three Local Authorities, the NWCSP is also making an application to the PCC for funding towards CCTV. This is for a capital contribution to modernise the CCTV infrastructure to Internet Protocol Recording alongside the cameras. This is separate to NWCSP's funding allocation.

3.5 Future funding from the PCC

As stated at 3.3, the Deputy PCC will be conducting a review of CSP funding ahead of a new outcomes-based commissioning framework that will be implemented in April 2018. The CSP is awaiting detailed information regarding the framework but it is understood that it will help CSPs and the PCC to further its understanding of local need, crime patterns and trends. It will enable the PCC to commission projects and services alongside the CSPs delivery; that focuses on need, address gaps in provision and meet outcomes.

3.6 Local Delivery, Key Projects and Progress

Local delivery of community safety projects and initiatives falls under the remit of the Community Safety Operational Groups. The Safer Redditch Group meets on a 6 weekly basis to monitor district performance and review local operational delivery. This group is the first point of contact for any local crime and community safety issues or concerns that may require a multi-agency response.

Progress of grant funded projects is reported to the PCC and at the end of the financial year there is a requirement to provide a comprehensive report to the PCC reviewing all projects funded in 2016/17. This will include a breakdown of expenditure and demonstrate the difference the projects have made. This report can be shared with Members once it has been endorsed by NWCSP. This report will now provide an update on some of the key funded projects.

Emerging Local Issues

Most recently, Safer Redditch has received a request for support in tackling increasing ASB by youths congregating in Matchborough Centre. Ward Member, Cllr Juliet Brunner, had already established a local working group of residents and businesses who had been affected by this issue. Safer Redditch was asked to discuss this problem at the group and this led to an ASB data and analysis profile being presented at the Jan 2017 meeting. As a result of the subsequent discussion, the group agreed to allocate £10,000 to targeted youth diversionary interventions and projects, specifically aimed at reducing the levels of Youth ASB in the area. Local Positive Activities Youth work providers will be commissioned to design and implement appropriate projects to seek to divert and prevent further disorder in the area.

Redditch & Bromsgrove Schools Respect Programme

The Respect programme continues to be successful providing whole day awareness sessions as part of school drop down days, it also provides bespoke classroom sessions on a number of subjects such as recognising and reporting hate crime, understanding healthy relationships and domestic abuse, the dangers of substance misuse and promoting respect and community responsibility. The project also provides one to one mentoring sessions to individual students who are felt to be at risk of becoming involved in crime and ASB or are at risk of becoming victims of crime.

Last school year (Sept 15 to July 16) the project saw 1445 students receive community safety information during PHSE lessons and drop down days across Redditch and Bromsgrove. 104 students were referred for 1 to 1 support through therapeutic mentoring sessions and 78 students received information via targeted small group workshops. 29 students took part in the nationally recognised CRUSH Programme, a young people's Domestic Abuse awareness course created and accredited by Women's Aid.

Redditch Travel Ambassadors Project

The project is working with 15 HOW College students from Redditch, who have a disability and travel independently on public transport. Their experiences of using public transport are being recorded and evaluated over a 12 month period. Their recommendations will then be used to work with travel companies to develop a better experience for disabled people using public transport. The project delivers a monthly group community safety awareness session alongside a one to one weekly mentoring session with each of the participants where their thoughts and experiences of public transport are recorded. This information will then be used to write training materials for bus companies and to help influence permanent service changes by public transport providers. The Travel Ambassadors will then be supported to take this educational work into the community working with different groups.

Safe Place Scheme

The Safe Place Scheme is a CSP funded scheme which was set up by Our Way Self Advocacy in Wyre Forest in 2014 and has now been rolled out across Worcestershire. It offers vulnerable people a safe place to go if they have a problem or concern when out and about in the town centres. All Safe Places are identified by a Safe Place sticker and staff receive training so that they are able to give reassurance and help people contact appropriate support, if needed. A directory of the Safe Places in Redditch and across the county is available at www.ourway.org.uk/safe-place-scheme/ and there is now a free Safe Place Scheme app available for mobile phones. Downloads of "My Town Worcestershire" from the App Store, will show you your nearest "Safe Place" and can guide you to it through Google Maps.

Community Safety teams in Worcestershire are working in partnership with West Mercia Police and Our Way Self Advocacy to support, develop and maintain the scheme across the county. A Redditch Community Safety Project Officer was instrumental in supporting the roll out of the scheme across the county and led on the development of the Mobile Phone App.

Hate Crime Awareness Week 2016

As part of the national Hate Crime Awareness Week in October and using funding provided by the PCC, North Worcestershire Hate Incident Partnership organised a number of community engagement events across the districts. In Redditch, an awareness stand was held in the Kingfisher Town Centre and a Street Theatre Company was commissioned to engage with residents through a number of thought provoking performances. Over 250 information bags were handed out. Residents felt comfortable approaching the stand and engaging with performers and staff to find out more about hate crime and, in some instances, people also offered their own personal experiences of how

they had been a victimised and how services could be improved. Information was displayed in public areas across town Hall Reception and press releases were sent to the local papers. The events were also promoted via relevant Twitter and Facebook pages.

Home Security Project and Sanctuary Scheme

Community Safety Project Officers have helped to support residents affected by domestic burglary and survivors of domestic abuse by providing home security information, security tools and where necessary capital works to increase the security of their properties. These actions helped burglary victims and domestic abuse survivors to stay in their own homes, providing valuable reassurance and increased feelings of safety and security for vulnerable residents at a traumatic time in their lives. 415 people received home security guidance and information and 17 people received target hardening works to their properties between April 2016 and Dec 2016.

Community Engagement

Over the year, Safer Redditch Project Officers have attended a number of events in order to speak to local residents, provide crime prevention advice and raise awareness of campaigns. Project Officers estimated that they had spoken to over 740 people at various events, for example talking to students at HOW College, attending Older People's forums, Neighbourhood Watch events, White Ribbon campaign stands and Christmas crime prevention events. Purse bells, chains and cables; personal attack alarms and shed alarms remain popular items and are useful as methods of engagement to encourage residents to discuss personal and home security.

ASB Case Management Group

The Redditch and Bromsgrove ASB Case Management Group was established in July 2016. The Group assesses repeat victims of ASB, considers persistent offenders and locations of concern, putting appropriate actions into place. The Group is chaired by West Mercia Police's North Worcestershire Harm Hub Sergeant and has multi-agency membership including RBC Housing Services and five local housing associations alongside Drug and Alcohol Service providers and Family Support. High risk victims of ASB have their risk management plans discussed at the Group and partners offer additional support, where appropriate.

3.7 Crime and Anti-Social Behaviour Data

In the new Partnership Plan, NWCSP will be assessed on its performance by how it achieves its desired outcomes. CSPs are moving away from the traditional method of considering police recorded crime and ASB data as performance indicators and are moving more toward focusing on delivering agreed partnership outcomes and improving mainstream provision. This is partly being driven by the PCC and his outcomes-based commissioning framework that is currently in development. This is a different way of assessing the work of CSPs and the Research and Information Officer will be instrumental in assisting partners to ensure performance measurement and evaluation are carried out in the best way to evidence that partnership activities are making a difference.

Currently levels of crime and disorder across North Worcestershire are presented using a limited range of data sources (police recorded crime, anti-social behaviour incidents, deliberate fire data) and this information is used at a range of groups at varying geographical and decision-making levels.

Appendix Three shows year to date figures for total recorded crime, key crime types and anti-social behaviour. Year to date data for all recorded crime in Redditch currently illustrates a 13% increase or 570 more offences, compared to the same period last year. This percentage increase in total recorded crime is at similar levels as North Worcestershire as a whole. Bromsgrove has seen an 8% increase and in Wyre Forest it is an 11% increase in total recorded crime. The North Worcestershire CSP met on 8th March and these figures were discussed in further detail.

4. Recommendation

- 4.1 That progress made by the North Worcestershire CSP be noted.

5. Appendices

Appendix One: NWCSP Membership List

Appendix Two: Table of Funding Requests made by NWCSP to the PCC 2017/18

Appendix Three: North Worcestershire Crime and ASB Data (Apr16 - Jan17)

6. Background Papers

North Worcestershire Community Safety Partnership Plan 2013/16 (refreshed 2015/16)

West Mercia PCC's Safer West Mercia Plan 2017/21

Officer Contact Details:

Name: Bev Houghton

Title: Community Safety Manager

Tel: 01527 534187

Email: bev.houghton@bromsgroveandredditch.gov.uk

Appendix One - Membership

Organisations should:

- Be a 'responsible authority' (RA) a 'co-operating body' (CB) or an 'invitee to participate' (IP) as defined by the Crime and Disorder Act (1998) or subsequent legislative amendments or have a strategic responsibility for community safety related issues.
 - Bromsgrove District Council (RA)
 - Chairperson of the Community Safety Operational Group for Bromsgrove (IP)
 - Chairperson of the Community Safety Operational Group for Redditch (IP)
 - Chairperson of the Community Safety Operational Group for Wyre Forest (IP)
 - Chairperson of the North Worcestershire Hate Incident Partnership (IP)
 - Hereford and Worcester Fire & Rescue Authority (RA)
 - HMP Hewell (IP)
 - Magistrates Bench Chairs (IP)
 - National Probation Service (RA)
 - Portfolio Holder for Community Safety for Bromsgrove District Council (IP)
 - Portfolio Holder for Community Safety for Redditch Borough Council (IP)
 - Portfolio Holder for Community Safety for Worcestershire County Council (IP)
 - Portfolio Holder for Community Safety for Wyre Forest District Council (IP)
 - Redditch and Bromsgrove Clinical Commissioning Group (RA)
 - Redditch Borough Council (RA)
 - Victim Support (IP)
 - Warwickshire and West Mercia Community Rehabilitation Company (RA)
 - West Mercia Police (RA)
 - West Mercia Police and Crime Commissioner (CB)
 - West Mercia Youth Offending Service (IP)
 - Worcestershire County Association of Local Councils (IP)
 - Worcestershire County Council (RA)
 - Worcestershire Regulatory Service (IP)
 - Wyre Forest Clinical Commissioning Group (RA)
 - Wyre Forest District Council (RA)

Appendix Two - Table of Funding Requests made by NWCSP to the PCC 2017/18

Priority	Initiative	Activity	Amount
Violence and abuse Theft and Acquisitive crime Protecting vulnerable communities Anti Social Behaviour, Damage and Nuisance Reducing Offending and Drug and Alcohol Misuse	Research and Information Officer	<p>Development of data collection strategies and protocols/data sharing agreements with partners and in order to create analytical products to support senior decision makers within the CSP.</p> <p>Development, maintenance and analysis of a robust evidence base of quantitative and qualitative data to inform the production, delivery, monitoring and evaluation of the Community Safety Partnership's priorities, plans and activities</p> <p>Assisting with the statutory obligations of the CSP including production of the CSP Strategic Assessment, partnership plan and strategies to reduce reoffending, tackling domestic abuse and reducing anti social behaviour.</p> <p>Continually analysing crime trends across the CSP, highlighting key trends and recommendations through reports, documents and presentations.</p>	£35,000

Priority	Initiative	Activity	Amount
Violence and abuse Theft and Acquisitive crime Protecting vulnerable communities Anti Social Behaviour, Damage and Nuisance Reducing Offending and Drug and Alcohol Misuse	Safer Bromsgrove Safer Redditch Safer Wyre Forest	This funding is flexible to allow the Safer Groups to take a proactive and responsive approach to delivering the Partnership Plan throughout the year. Examples of projects the Safer Groups will deliver: <ul style="list-style-type: none"> - Alcohol/substance misuse campaigns - Community Ambassadors - Community safety events and engagement opportunities - Crime prevention/ personal safety information, tools, equipment - Domestic Abuse Projects - Hate Crime Awareness Week - Hate Incident Reporting Scheme - Home Security Schemes - Personal safety campaigns - Safe Place Scheme - School Mentoring Scheme - Town centre based activities - day and night time economy - Website, social media and communications - Youth ASB diversionary projects 	£30,595 £44,406 £45,249
Reducing Offending	Interventions and services to be determined by the Worcestershire Reducing Offending Strategy Group	Activities will be focused on developing services across Worcestershire.	£40,700
Reducing Offending	North Worcestershire One Day One Conversation Activities	Work to address offenders needs within North Worcestershire to support them from reoffending, examples include rent deposits, clothing for job interviews, short term 1-2-1 support.	£4,000
Total			£199,250

Appendix Three – North Worcestershire Crime and ASB Data April 2016 - January 2017

	North Worcestershire				Bromsgrove District				Redditch Borough				Wyre Forest District			
	PREV YTD (Apr-Jan) 2015/16	YTD (Apr-Jan) 2016/17	Change	% Change	PREV YTD (Apr-Jan) 2015/16	YTD (Apr-Jan) 2016/17	Change	% Change	PREV YTD (Apr-Jan) 2015/16	YTD (Apr-Jan) 2016/17	Change	% Change	PREV YTD (Apr-Jan) 2015/16	YTD (Apr-Jan) 2016/17	Change	% Change
Total Recorded Crime	14,640	16,219	1,579	11%	4215	4552	337	8%	4560	5130	570	13%	5865	6537	672	11%
All Other Theft Offences	1,557	1,653	96	6%	473	536	63	13%	493	473	-20	-4%	591	644	53	9%
Bicycle Theft	146	135	-11	-8%	38	31	-7	-18%	46	47	1	2%	62	57	-5	-8%
Burglary Other	929	1,051	122	13%	323	335	12	4%	208	223	15	7%	398	493	95	24%
Criminal Damage & Arson	1,837	1,889	52	3%	475	505	30	6%	618	626	8	1%	744	758	14	2%
Domestic Burglary	609	749	140	23%	243	323	80	33%	171	188	17	10%	195	238	43	22%
Other Crimes Against Society	1,512	1,716	204	13%	513	536	23	4%	460	553	93	20%	539	627	88	16%
Other Sexual Offences	289	379	90	31%	63	88	25	40%	116	145	29	25%	110	146	36	33%
Business Robbery	12	28	16	133%	8	11	3	38%	1	9	8	800%	3	8	5	167%
Personal Robbery	86	137	51	59%	24	36	12	50%	32	55	23	72%	30	46	16	53%
Rape	171	218	47	27%	40	47	7	18%	68	82	14	21%	63	89	26	41%
Shoplifting	1,260	1,371	111	9%	206	295	89	43%	380	482	102	27%	674	594	-80	-12%
Theft from Person	112	143	31	28%	21	31	10	48%	46	58	12	26%	45	54	9	20%
Vehicle Offences	1,822	1,568	-254	-14%	799	563	-236	-30%	405	296	-109	-27%	618	709	91	15%
Violence With Injury	1,779	2,046	267	15%	413	499	86	21%	587	721	134	23%	779	826	47	6%
Violence Without Injury	2,519	3,136	617	24%	576	716	140	24%	929	1172	243	26%	1014	1248	234	23%
VAP With Injury - Alcohol Related	667	774	107	16%	132	160	28	21%	215	283	68	32%	320	331	11	3%
VAP With Injury - Drug Related	84	105	21	25%	16	21	5	31%	18	36	18	100%	50	48	-2	-4%
VAP With Injury- Domestic Abuse Related	637	660	23	4%	130	148	18	14%	220	240	20	9%	287	272	-15	-5%
Rape- Domestic Abuse Related	39	51	12	31%	10	9	-1	-10%	20	20	0	0%	9	22	13	144%
Other Sexual Offences- Domestic Abuse Related	19	12	-7	-37%	7	3	-4	-57%	8	4	-4	-50%	4	5	1	25%
Hate Offences & Crimed Incidents	216	291	75	35%	47	49	2	4%	95	154	59	62%	74	88	14	19%
Business Crime	2,717	2,881	164	6%	N/A	833	N/A	N/A	N/A	872	N/A	N/A	N/A	1176	N/A	N/A
ASB Incidents	8,658	8,935	277	3%	2131	2118	-13	-1%	2983	3029	46	2%	3544	3788	244	7%

RAG Assessment Coding
 Red= an increase of 10% or more
 Amber = an increase of between 1% and 9.9%
 Green = no change or a decrease

Crime and Disorder Scrutiny

22nd March 2017

Panel

WORK PROGRAMME

Date	Item	Lead Officer
22 nd March 2017	North Worcestershire Community Safety Partnership - Update Report	Head of Community Services
27 th September 2017	Anti-Social Behaviour in Redditch – Work of the Partnership (Report)	Head of Community Services
28 th March 2018	To be determined	

