

Elected Member BRIEFING NOTE

To: Crime and Disorder Scrutiny Panel
From: Bev Houghton
Dept: Community Safety
Tel: Ext No: 3194

CC: Cllr Joe Baker – Portfolio Holder for Community Services
Sue Hanley – Deputy Chief Executive
Judith Willis – Head of Community Services

North Worcestershire Community Safety Partnership 2017/18

1. Summary

1.1 This report provides an update on the progress of the North Worcestershire Community Safety Partnership (NWCSP) during 2016/17.

2. Background

2.1 NWCSP has been in existence since May 2013 and delivers the statutory community safety requirements for the three district areas of Bromsgrove, Redditch and Wyre Forest.

2.2 Local representation on NWCSP is fulfilled through a number of positions. Redditch Borough Council's Elected Member representative is the Portfolio Holder for Community Services, Councillor Joe Baker. Sue Hanley, Deputy Chief Executive is the Council's Responsible Authority representative and is also Chair of NWCSP. The Community Safety Manager, Bev Houghton manages the Council's community safety team, provides officer support to NWCSP and is also Chair of the Safer Redditch Group.

2.3 Scrutiny arrangements for the CSP remain unchanged with local authorities having a statutory duty to scrutinise the work of its local CSP, under Section 19 of the Police and Justice Act 2006.

2.4 Alongside the relationship the Council has with the CSP, there is also a direct role in holding the West Mercia Police and Crime Commissioner (PCC) to account through the West Mercia Police and Crime Panel (PCP). Redditch Borough Council's representative on the PCP is the Portfolio Holder for Community Services, Councillor Joe Baker.

3. Current Position

3.1 Partnership Structure

Local operational activity is delivered via the Safer District Groups, as Safer Bromsgrove, Safer Redditch and Safer Wyre Forest.

There are also a number of other partnership sub-groups as illustrated below.

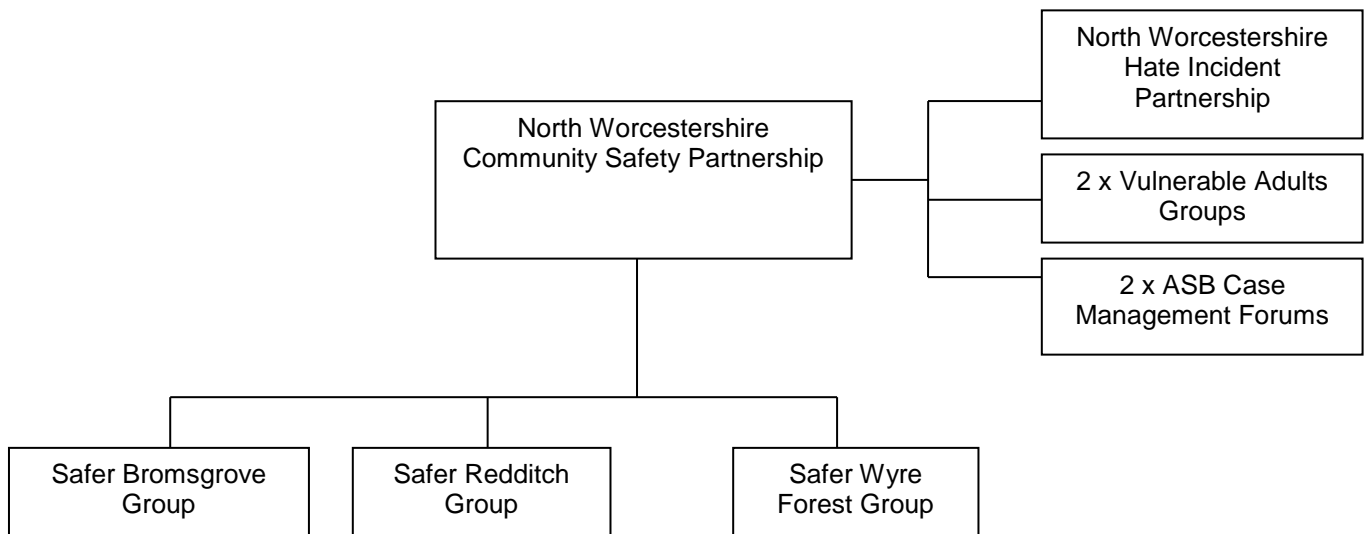


Diagram 1: Structure of the North Worcestershire Community Safety Partnership

3.2 Strategic Assessment and Partnership Plan

NWCSP has a statutory duty to produce a three year rolling plan outlining how the Partnership intends to address key crime and community safety priorities, as identified through its annual Strategic Assessment.

In December 2016, NWCSP agreed its strategic priorities for 2017-20 as:-

- I. Reducing Violence and Abuse: including sexual offending, domestic abuse and Child Sexual Exploitation (CSE)
- II. Reducing Theft and Acquisitive Crime: including shoplifting, thefts and burglaries
- III. Reducing Anti-Social Behaviour, Damage and Nuisance: including criminal damage, environmental issues and deliberate fires

Protecting vulnerable communities from being specifically targeted by crime and ASB (including hate crime, harassment and threatening behaviour) is a cross cutting theme which impacts on all three CSP priorities.

Reducing Re-offending and Drug and Alcohol Misuse are also cross cutting themes which impact on all three CSP priorities

3.3 John Campion, West Mercia Police and Crime Commissioner

John Campion was elected as the Police and Crime Commissioner (PCC) for West Mercia on 5th May 2016. The PCC has a duty to co-operate with CSPs to reduce crime and disorder and there is a reciprocal duty on CSPs to collaborate with the PCC. The PCC and the CSP must have regard to each other's priorities within their respective plans. The PCC's Safer West Mercia Plan was published in October 2016 and his vision is reflected within the NWCSP Strategic Priorities.

Tracey Onslow, appointed as Deputy Police and Crime Commissioner in July 2016, has a brief to represent the PCC in communities across West Mercia. Her portfolio includes cyber, rural and business crime; victims' services and commissioning. CSPs have been advised that the PCCs commissioning model is still in development and a key area being considered is a review of funding provided to CSPs. The review focuses on funding provided to CSPs for analytical support, CCTV funding and funding for reducing re-offending activities. Outcomes of the review into these particular areas of community safety funding are expected toward the end of September 2017.

3.4 Grant Funding from the PCC 2017/18

Although CSPs in West Mercia had been advised of their respective grant allocations for 2017/18 based on previous levels of funding, partnerships were asked to apply to the PCC providing details of how CSPs would like to use their allocations.

Following the NWCSF grant submission in Feb 2017, the PCC rejected a number of the funding requests put forward and also made some suggestions of projects that he would like to see delivered. This was a significant change to how CSP funding had previously been allocated and reflects the PCCs move to a commissioning model for CSPs rather than the allocation of a grant.

The funding amount originally ring fenced for NWCSF initiatives totalled £155,950; however the final amount of funding provided to NWCSF for community safety activities in 2017-18 was £139,950. The table below details the projects that NWCSF has agreed to deliver using their funding allocation.

NWCSF Funding Allocation – 2017-18

Project Name	Allocated Amount
NWCSF Research & Information Officer	£35,000
Bromsgrove Town Centre Management Group	£10,000
Bromsgrove Youth ASB Outreach Services	£8,000
Bromsgrove Young Citizens Challenge/Crucial Crew	£2,000
Redditch Town Centre NTE Improvements	£10,000
Redditch Youth ASB Outreach Activities	£8,000
Redditch Young Citizens Challenge/Crucial Crew	£4,000
Team Wyre Forest	£10,000
Wyre Forest Youth ASB Outreach activities	£4,000
Wyre Forest Community Ambassadors and Citizenship Event	£4,000
Wyre Forest Young Citizens Challenge/Crucial Crew	£4,000
North Worcestershire Personal Safety Campaigns:-	
Sexual Violence Campaign	£2,000
Protect Your Property Campaign	£1,250
No Rogue Trader Campaign	£4,000
CSE Awareness Campaign	£2,000
Cyber Crime Awareness Campaign	£1,000

North Worcestershire – Domestic Abuse/Sanctuary Schemes	£10,000
North Worcestershire Hate Crime Awareness	£9,000
North Worcestershire Street Pastors	£11,000
Total	£139,250

By invitation from the PCC and on behalf of the three District Councils, NWCSP also submitted an application to the PCC for funding towards CCTV improvements. This application was also submitted in Feb 2017, for a capital contribution to modernise the CCTV infrastructure and would be separate funding to NWCSP's annual grant allocation. The CSP has been advised that decisions regarding CCTV funding applications have been put on hold whilst the PCC conducts a 'review' of CCTV provision across West Mercia. The PCC aims to have more information available on the outcome of his review and the status of the funding applications in September 2017.

Progress of all grant funded projects is reported to the PCC and at the end of the financial year there is a requirement to provide a comprehensive report to the PCC reviewing all project activity, outputs and outcomes. The 2016/17 final report to the PCC is available on request.

3.5 PCC Grants to Voluntary Sector Organisations

Alongside providing funding to CSP's across West Mercia, the PCC also provided grants to a number of voluntary sector organisations via a separate application process. This funding was directed toward larger voluntary sector organisations working across wider geographical areas. The table at **Appendix One** shows the list of PCC funded voluntary and community organisations that include North Worcestershire in their area of delivery. The CSP is making links with these organisations, and vice versa to ensure that duplication is minimised and all opportunities for closer working are explored.

3.6 District Delivery, Key Projects and Progress

The Safer Redditch Group meets on a 6 weekly basis to monitor district delivery and review local operational activity on behalf of the CSP. This group is the first point of contact for any district crime and community safety issues or concerns that may require a multi-agency response.

Below is an update on a number of current community safety/crime reduction projects that have been delivered from April 2017 to the current date:-

Shoplifting Problem Profile

Crime and ASB data presented at Safer Redditch identified that shoplifting was one of the most frequent offences recorded by the police. As the police data only provided a "snap shot" of these offences, the Community Safety Project officer carried out a comprehensive survey of stores within the Town Centre to find out more information.

A total of 68 stores were visited and initial findings indicate that there is significant under reporting of shoplifting by the stores affected. This is an ongoing project which will later include further surveys to gather information from outlying shops such as retail parks and supermarkets.

The surveys were delivered to stores in the week commencing 17th July and were introduced to store managers with an explanation of the plans for the project. The stores were given a two week period in which to complete the questionnaire before them being collected in the week commencing 31st July.

In order to capture maximum information, store managers where available, were “interviewed” upon collection of the surveys to clarify their findings and a significant amount of additional qualitative detail was captured at that point. Although time consuming, this was beneficial in terms of the additional information that otherwise would not have been captured.

Out of the 69 surveys delivered, 40 were completed and 19 were not; of the completed surveys, 7 stores stated that they had no issues with thefts and 23 shops were not members of BARC with and some unaware of its existence. BARC is a ‘Shop Watch’ type group called Businesses against Redditch Crime and for a monthly fee shops sign up to share information and expertise about retail crime and members also receive shop watch radios. A meeting has been arranged with the Town Centre manager and the Kingfisher Centre Security manager to discuss these findings further.

The Shoplifting project is at the Scanning and Analysis stage in the SARA problem solving model adopted by the CSP, with Responses and Assessment to follow in due course. Once the surveys have been fully analysed, a strategy of responses to reduce the number of thefts will be progressed and PCC funding has already been allocated to support crime reduction activities in the Town Centre.

In the meantime, the Police have agreed to bring forward their high profile Christmas foot patrols in and around the Town Centre to October to coincide with Christmas goods being displayed in stores. Crime data indicates that October is a peak month for shoplifting offences.

Nominated Neighbour Scheme

Concerns were raised with Community Safety Project Officers following a number of doorstep crimes reported in Redditch and Bromsgrove; these included an elderly resident in Redditch who was tricked into withdrawing £8,000 by thieves pretending to carry out work at the resident’s property. In response to this issue Project Officers are piloting a Nominated Neighbour scheme.

The scheme works by identifying a Nominated Neighbour of a resident referred as vulnerable, where the neighbour is available to check the identity of any cold callers to vulnerable resident’s address. The cold caller will be directed by a pre-printed card to the nominated neighbour’s address, for their identity and purpose of visit to be confirmed thereby removing the need for the vulnerable resident to open the door. A window sticker will also be in place advising any callers that their identity will be checked, providing another deterrent to any would be offenders.

An information pack has been produced and the scheme will be launched in October. Funding has been allocated to this area of work at the request of the PCC and the scheme is initially being piloted in Redditch and Bromsgrove. In

addition to press and media releases, visits to various older person forums and groups across Redditch and Bromsgrove are being arranged in order to promote the scheme.

ASB in Matchborough

Since Jan 2017 Community Safety Project Officers have worked with Cllr Brunner, the local Resident and Business Task Group and the Safer Neighbourhood Team to address the ASB issues in the area.

Crime risk surveys have been carried out in the Shopping Centre, at Christchurch and Noah's Ark Nursery. Environmental changes and landscaping works have been carried out and further, more long term capital works are planned to improve the whole area and reduce the likelihood of ASB.

With regard to direct work with the young people engaging in the ASB in Matchborough Centre, West Mercia Police have led on providing sporting diversionary activities alongside the Sports Partnership and more recently Redditch United Football Club. The Police SNT was also successful in securing internal funding to support Hair and Beauty training for young people in the area.

Safer Redditch had previously allocated 10K from its reserves to support youth crime/ASB reduction initiatives in the area. In order to avoid duplication of diversionary activity already underway, it was proposed that the funding be used to pilot a detached youth work project to attempt to engage with the harder to reach young people in the local community.

A commissioning proposal was circulated to all local Positive Activities Providers but unfortunately, none felt they were in a position to deliver the brief. A further meeting has been scheduled to work with local providers to identify the best way to respond to youth related ASB issues in neighbourhoods. This meeting will be supported by the County Council's Youth Services Commissioning Manager to identify opportunities for future commissioning in the long term.

An alternative project has been identified, using the Safer Redditch funding, which will see specific work carried out with the young women in area. Due to the absence of key officers from the SNT, this Girls Work project will now take place later in the autumn. The police have advised that fortunately the ASB problems predicted to take place over the summer holiday did not arise and there is now time to plan a more long term sustainable project.

In the development of this project, a new volunteer has been identified who is keen to support the work with young women. This female volunteer is now 27 but in her teenage years engaged in ASB to the extent that she was issued with a Criminal ASB Order (CRASBO). This local resident now volunteers at a community youth club and is very keen to get involved in supporting the young women identified in Matchborough to deter them from following a similar path to her.

ASB in Other Areas

The Redditch Community Safety Project Officer has supported local communities experiencing ASB in a number of Redditch Districts including:-

Winyates Shopping Centre and the Craft Centre:

The Project Officer met with shop keepers and residents to discuss their concerns and carried out crime risk surveys, to identify ways to improve the environment and reduce opportunities to commit ASB. A telephone kiosk that had been identified as being used by drug dealers has been decommissioned. The kiosk was encouraging groups of people to congregate, which in turn was causing fear of crime in the community. Local residents have advised that the situation has improved and further, more long term works are planned to improve security in the area and reduce opportunities for ASB.

Oakenshaw:

Following reports from a concerned resident, the Project Officer liaised with neighbours and the Police regarding groups of youths congregating and alleged drug dealing in a residential area. The Project Officer wrote to every resident in the surrounding area asking for more information about the problems and the Police have increased patrols. Residents have advised that the situation has improved and the teams continue to monitor the location.

Disused Railway Tunnel – Southcrest:

Following reports from several concerned parents advising that young people were accessing the disused railway tunnel, the Project Officer conducted a site visit. The location presented a risk of serious injury and also revealed a hidden fly tipping problem. A crime risk survey was completed and Highways England removed the rubbish and secured the tunnel prior to the school summer holidays.

Astwood Bank:

After an increase in community concern regarding incidents of ASB and evidence of drug dealing in a local park and wooded area, the Project Officer liaised with residents and the Police and completed a crime risk survey. Capital works to install secure fencing and lighting has been requested, which will assist in reducing opportunities for criminal activity and ASB.

Mount Pleasant:

A concerned resident visited the Town Hall to raise issues about large numbers of adults congregating and consuming alcohol in a residential street, at various times of day and night. The Project Officer conducted a site visit and wrote to every resident in the street to request feedback and ensure that all reports could be captured. Officers are awaiting responses from other residents and the situation is being monitored.

Following a dispute at a separate address, the Project Officer has provided advice and assistance to a family who felt intimidated by their neighbour. Window alarms have been fitted and crime prevention advice has improved security at the property and improved the well-being of the family.

Redditch Town Centre:

In addition to the shoplifting issue, there have been a number of ASB/crime incidents involving “homeless” adults who have been using various sites to beg, sleep rough and use drugs. A number of crime risk surveys have been carried out and environmental changes made to reduce opportunities for drug taking and ASB. For example, the removal of a large number of shrubs at the side of Hughes Electrical Store, where over 300 used syringes were discovered at the rear of the building. As a result of the crime risk survey being completed, Hughes agreed to pay RBC to remove the litter and shrubs. This has opened up sight lines and removed the opportunity for criminal and ASB activity in busy Town Centre location. Similar work has been carried out at the Palace Theatre car park and around Hemmings Entry.

Bentley Close:

The Neighbourhood Watch coordinator for the close contacted the Community Safety Team to request landscaping work in an area where ASB had been reported as an issue for the residents. The environmental works were carried out and a note of appreciation was received from the Neighbourhood Watch co-ordinator on behalf of the residents.

Bordesley:

An abandoned house in the area is attracting a large number of ASB incidents, with multiple calls for service to the Police and Fire Service. The Project Officer has co-ordinated activity between partners and following a joint meeting Local Government legislation is to be used to force remedial works to be carried out. This will prevent opportunities for ASB and reduce the risk of injury at the site.

Lodge Park:

A home security survey was carried out for a family who were having youths/intruders in their rear garden causing them significant distress and anxiety. The Project Officer fitted alarms to the windows and recommended a number of works to make the property more secure.

Bromsgrove Road:

The Project Officer has been assisting residents who have had a long running dispute with a neighbour who is constantly lighting bonfires in their garden, following a request from a Ward Member for assistance. The Project Officer has liaised with the relevant partner agencies, who have taken action and residents have advised that the situation has improved. The residents have forwarded an email of thanks to the team for their assistance.

Batchley:

The Project Officer has carried out a home security survey following an incident where a lit object was thrown through a first floor window. The resident is a single mother with a young child and was extremely distressed by the incident. The fire service also carried out independent home safety check and smoke alarms were fitted at the property.

St David's House, Batchley:

The Project Officer has liaised with staff and residents following issues of ASB and in particular a nearby alleyway with old iron gates. Crime risk advice has recommended removal of the gates and the project is ongoing.

Phillips Terrace:

The Project Officer has met with residents in the sheltered scheme who have been experiencing ASB. A crime risk survey has been completed and letters have been sent to other residents by Locality Team to gather more information. The project is ongoing.

Home Security / Domestic Abuse Sanctuary Scheme

Crime risk surveys have been carried out in Abbeydale, Smallwood, Matchborough, Winyates, Headless Cross, Mount Pleasant and Oakenshaw. Many of the properties have had children present so additional time and sensitivity has been taken to provide appropriate reassurance.

Redditch & Bromsgrove Schools Respect Programme

The Respect programme continues to be successful providing whole day awareness sessions as part of school drop down days, it also provides bespoke classroom sessions on a number of subjects such as recognising and reporting hate crime, understanding healthy relationships and domestic abuse, the dangers of substance misuse and promoting respect and community responsibility. The project also provides one to one mentoring sessions to individual students who are felt to be at risk of becoming involved in crime and ASB or are at risk of becoming victims of crime.

Last school year (Sept 16 – July 17) the project saw 625 students receive community safety information during PHSE lessons and whole school Drop Down Days across Redditch and Bromsgrove. 97 students were referred for one to one support through therapeutic mentoring sessions and 44 students received information via targeted small group workshops.

38 students took part in the nationally recognised CRUSH Programme, a young people's Domestic Abuse awareness course created and accredited by Women's Aid. Numbers for the project across the board were lower this year due to the Community Safety Project Officer accredited to deliver many of the sessions being on maternity leave during the year.

Redditch Travel Ambassadors Project

Initially the project worked with 15 HOW College students from Redditch, who have a disability and travel independently on public transport. Their experiences of using public transport were recorded and evaluated over a 12 month period. Some of the students did not feel able to continue with the project for a variety of reasons and 10 young people have now completed the programme.

Their recommendations will now be used to work with travel companies to develop a better experience for disabled people using public transport. The project delivered monthly group community safety awareness sessions, alongside one to one weekly mentoring with each of the participants where

their thoughts and experiences of public transport were recorded. This information will be used to write training materials for bus companies and to help influence permanent service changes by public transport providers. The remaining Travel Ambassadors will now be supported to take this educational work into the community working with other support and advocacy groups.

Safe Place Scheme

The Safe Place Scheme is a CSP funded project which was set up by Our Way Self Advocacy in Wyre Forest in 2014 and has now been rolled out across Worcestershire. It offers vulnerable people a safe place to go if they have a problem or concern when out and about in district town centres. All Safe Places are identified by a Safe Place sticker and employees/volunteers receive training so that they are able to give reassurance and help people contact appropriate support, if needed.

A directory of the Safe Places in Redditch and across the county is available at www.ourway.org.uk/safe-place-scheme/ and there is a free Safe Place Scheme app available for mobile phones. Downloads of "My Town Worcestershire" from the App Store, will show you your nearest "Safe Place" and can guide you to it through Google Maps.

Community Safety teams in Worcestershire are working in partnership with West Mercia Police and Our Way Self Advocacy to support, develop and maintain the scheme across the county. A Redditch Community Safety Project Officer is instrumental in supporting Our Way Advocacy to co-ordinate the scheme and led on the development of the Safe Place Mobile Phone App. In the first quarter of the app being launched, there were 217 downloads.

Hate Crime Awareness Week 2017

As in previous years, the Partnership has allocated some of its PCC funding to host a number of events across Hate Crime Awareness week from 16th to 20th October 2017. North Worcestershire Hate Incident Partnership (HIP) has organised a number of community engagement events across the three districts.

In Redditch, an awareness stand will be held in the Kingfisher Town Centre on the 18th October and a Street Theatre Company has been commissioned to engage with residents using a number of thought provoking performances. The HIP will also be holding a re-launch event on the 20th October. The event will see the introduction of a new Chair, revised protocols and new terms of reference.

This year, the HIP has also made funds available to local community groups to host their own events during hate crime awareness week.

Young Citizens Challenge

The Young Citizen's Challenge is a weeklong event that engages with pupils in Year 6 from schools across Redditch and Bromsgrove. The event is held at Bromsgrove Police & Fire Station and pupils take part in workshop sessions with community safety partners during the day, such as Fire Service, Western Power, Road Safety, West Mercia Police, the Community Safety team and

SARA. 1000 pupils took part in the project in May 2017 and received key Community Safety messages.

Community Engagement

Project Officers have attended a number of community events at Arrow Valley Lake, Morton Stanley Park, Sidemoor and Charford during the summer. Further community engagements were carried out at Redditch College and to various community groups to promote the Nominated Neighbour Scheme.

3.7 Crime and Anti-Social Behaviour Data

In the new Partnership Plan, NWCSP will be assessed on its performance by how it achieves its desired outcomes. CSPs are moving away from the traditional method of considering police recorded crime and ASB data as performance indicators and are moving more toward focusing on delivering agreed partnership outcomes and improving mainstream provision. This is partly being driven by the PCC and his outcomes-based commissioning framework that is currently in development. This is a different way of assessing the work of CSPs and the Research and Information Officer will be instrumental in assisting partners to ensure performance measurement and evaluation are carried out in the best way to evidence that partnership activities are making a difference.

Currently levels of crime and disorder across North Worcestershire are presented using a limited range of data sources (police recorded crime, anti-social behaviour incidents, deliberate fire data) and this information is used at a range of groups at varying geographical and decision-making levels.

Appendix Two shows year to date figures for total recorded crime, key crime types and anti-social behaviour from April to July 2017. The North Worcestershire CSP met on 6th September and these figures were discussed in further detail.

4. Recommendation

- 4.1 That the report from North Worcestershire CSP be noted.

5. Appendices

Appendix One: West Mercia PCC Grants to Voluntary Organisations (NW)

Appendix Two: North Worcestershire Crime and ASB Data (Apr17 - July17)

6. Background Papers

- North Worcestershire Community Safety Partnership Plan 2017/20 (Draft)
- West Mercia PCC's Safer West Mercia Plan 2017/21

Officer Contact Details:

Name: Bev Houghton

Title: Community Safety Manager

Tel: 01527 534187

Email: bev.houghton@bromsgroveandredditch.gov.uk