



Redditch Crime & Disorder Scrutiny Panel

Anti-Social Behaviour Overview

Bev Houghton

Community Safety Manager

North Worcestershire Community Safety Partnership

Tel: 01527 534187

Email: bev.houghton@bromsgroveandredditch.gov.uk



Overview

- How do we:
 - Define Anti-Social Behaviour?
 - Measure it?
- What patterns can we observe?
 - Incident types
 - Seasonal
 - Geographical
 - Neighbourhood
- How can we find out more?



Defining ASB

- Home Office, 2014
 - “Behaviour likely to cause harassment, alarm or distress to any person. This will apply for example where the ASB has occurred in a public place... and where the behaviour does not affect the housing management functions of a social landlord or people in their homes.” (p22)
 - “Conduct capable of causing nuisance or annoyance to a person in relation to that person’s occupation of residential premises or the conduct is capable of causing housing-related nuisance or annoyance to any person.” (p22)
 - “..activities carried out, or likely to be carried out, in a public place: have had, or are likely to have, a detrimental effect on the quality of life of those in the locality; is, or is likely to be, persistent or continuing in nature; and is, or is likely to be, unreasonable.” (p47)



Defining ASB

- Redditch Borough Council, Anti-Social Behaviour Statement of Policy & Procedures
 - “Anti-Social Behaviour covers any behaviour by an individual or group which makes another person or group feel harassed, alarmed, threatened or distressed.”
 - “It includes a variety of behaviour that can blight the quality of community life and is based on individual perception.”
 - “Anti-Social Behaviour may constitute a nuisance and annoyance, harassment or criminal activity.”



Measuring ASB

- Police National Incident Recording Standard
 - Nuisance – “causes trouble ...to the local community in general”
 - Personal – “... deliberately targeted at an individual or group...”
 - Environmental – “...have an impact on their surroundings...”
- Registered Social Housing Providers
 - “ASB or Nuisance Report Forms”



Incident types

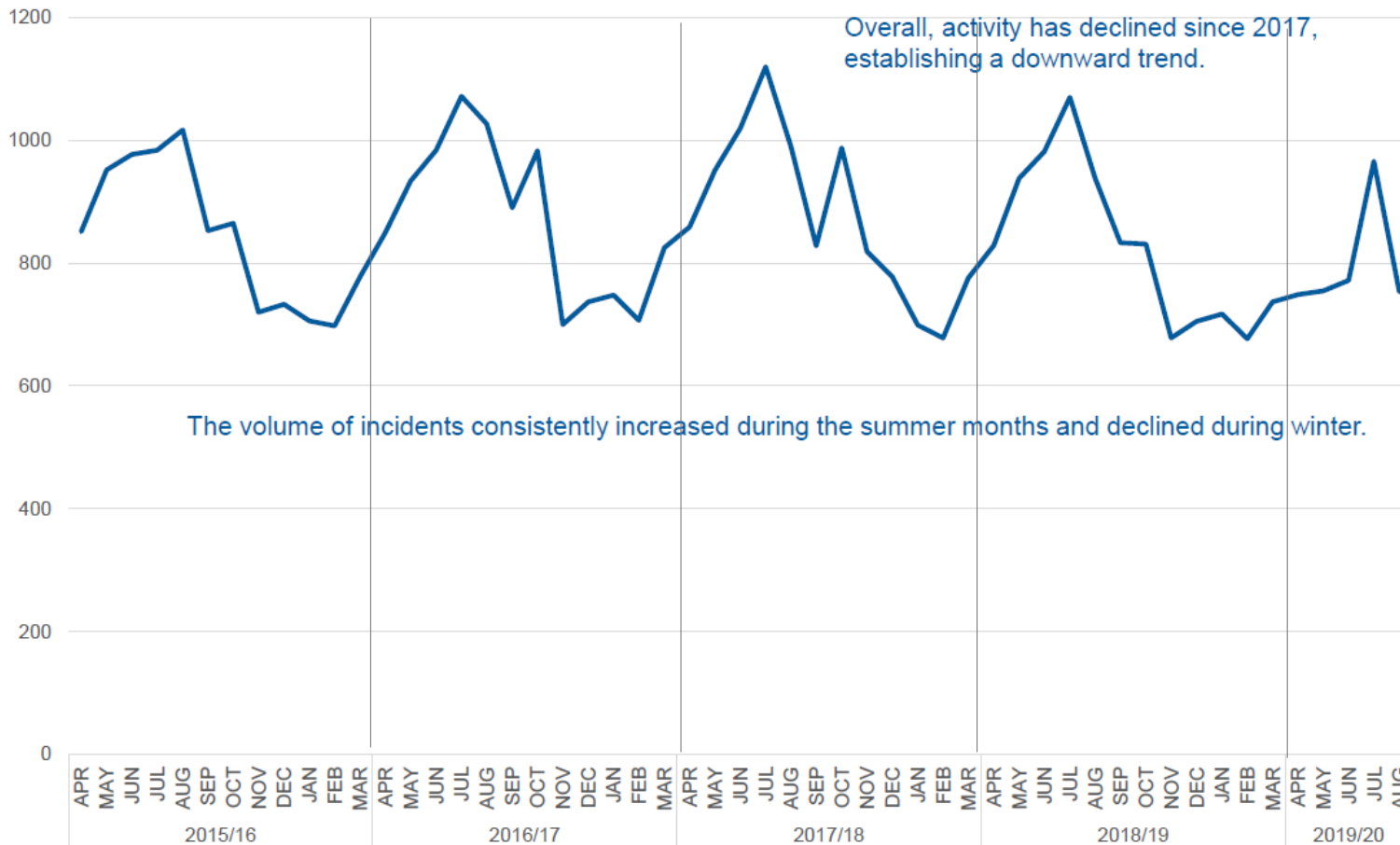
Antisocial Behaviour in North Worcestershire between 1 April 2017 to 31 March 2019

Key Word description of incident	2017 - 2019	2018 - 2019	Mean	Mean Percentage
Other	5426	5320	5373	53%
Youth related	1715	1294	1505	15%
Neighbour Dispute	1396	1447	1422	14%
Threats/ Harassment	1096	1018	1057	10%
Fights/ Arguments	593	641	617	6%
Parking	162	120	141	1%
Begging	114	36	75	1%

Seasonal Patterns



Antisocial Behaviour in North Worcestershire between 1 April 2015 to 28 August 2019





Redditch Ward Patterns

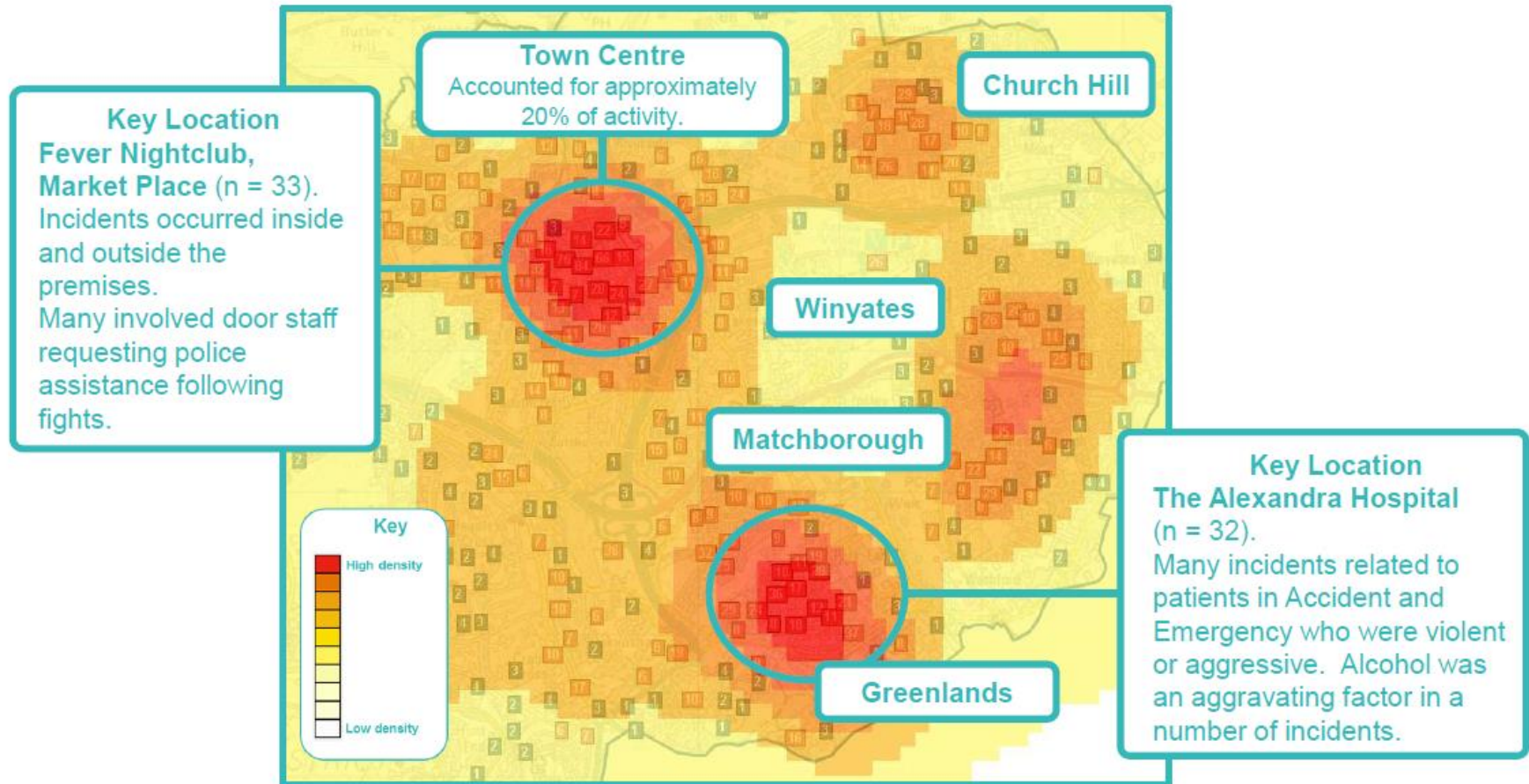
Antisocial Behaviour in Redditch between 1 April 2017 to 31 March 2019

Ward	2017 - 2018	2018 - 2019	Difference	Percentage
Abbey	603	562	-41	-7%
Astwood Bank and Feckenham	87	84	-3	-3%
Batchley and Brockhill	391	309	-82	-21%
Central	286	269	-17	-6%
Church Hill	280	298	18	6%
Crabbs Cross	91	107	16	18%
Greenlands	572	550	-22	-4%
Headless Cross and Oakenshaw	223	267	44	20%
Lodge Park	200	207	7	4%
Matchborough	286	203	-83	-29%
West	100	91	-9	-9%
Winyates	349	256	-93	-27%
Grand Total	3468	3203	-265	-8%

Where?

1 April 2018 to 31 March 2019

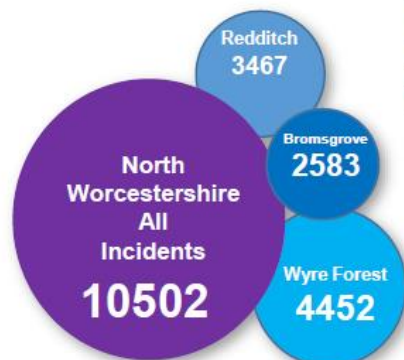
Clusters of activity were focused upon the town centre and residential areas with a higher density of population.





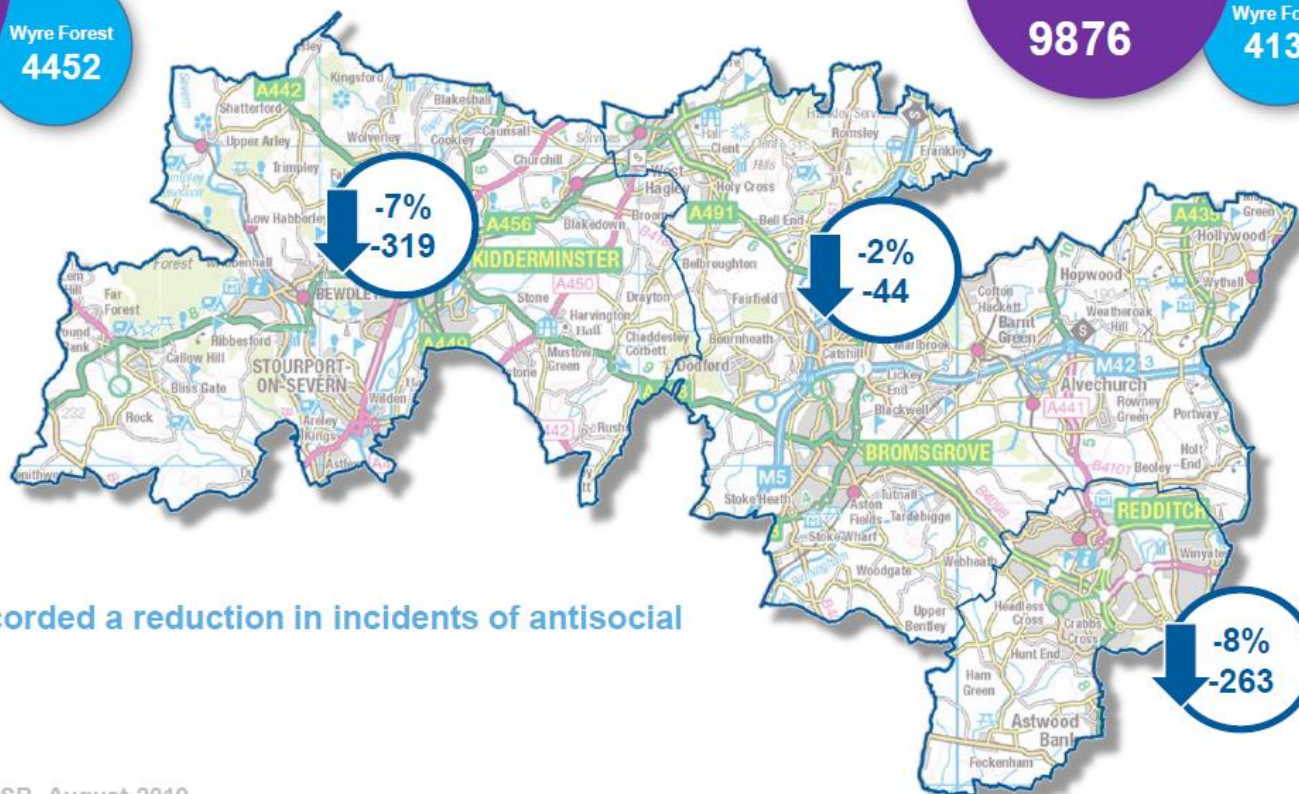
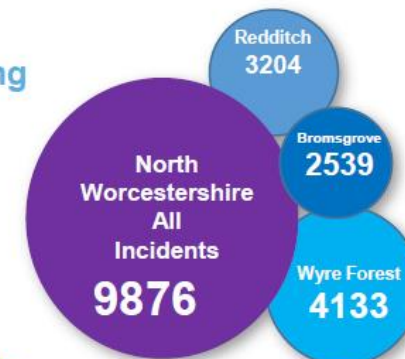
District Data

2017 to 2018



There were 6% fewer incidents of antisocial behaviour recorded across North Worcestershire between 1 April 2018 and 31 March 2019 than during the same period the previous year.

2018 to 2019



All districts recorded a reduction in incidents of antisocial behaviour.



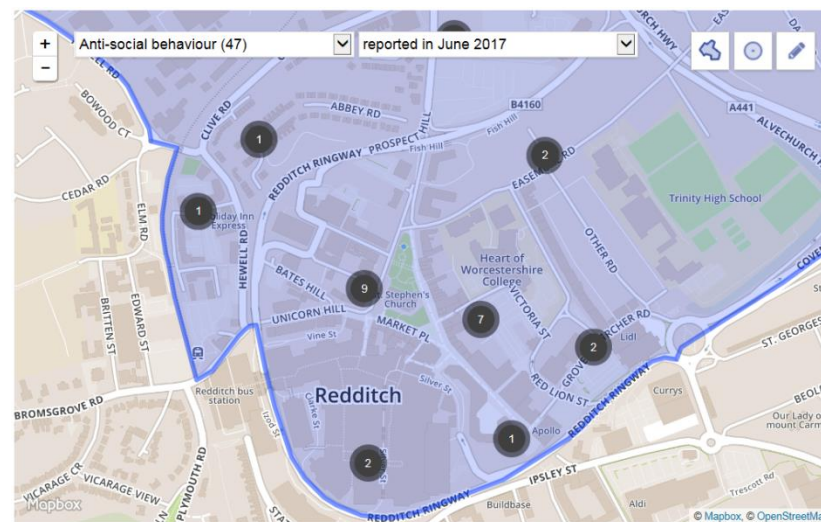
ASB Tools & Powers

- Partnership funded two day ASB & Environmental Crime training session delivered in Jun 2019. Further date planned in Nov, to be part funded by local Housing Assoc
- Cross service officer group established to implement a corporate approach to ASB enforcement
- To date 1 Community Protection Warning drafted but not issued as possession proceedings to be taken
- 5 Community Trigger applications received in Redditch to date – 4 completed, 1 in progress
- Development of multi-agency ASB and Complex Case group to address most serious and complex issues and concerns.



Find out more

User-friendly crime & ASB information can be found online at www.police.uk



Regular liaison and joint action with all CSP agencies coordinated by Redditch Community Safety Team – Tel: 01527 534187
communitysafety@bromsgroveandredditch.gov.uk



North Worcestershire Community Safety Partnership
c/o Redditch Town Hall, Walter Stranz Square, Redditch B98 8AH
Tel: 01527 534187
Email: communitysafety@bromsgroveandredditch.gov.uk
Website: <https://nwcsp.org/>