

19/01575/FUL

Former Play Area, Edgeworth Close,
Redditch

Residential development of 19 affordable dwellings with associated parking.

Recommendation: Delegate to Head of Service to GRANT planning permission subject to a S106 Agreement and conditions

Site Location Plan



Site Layout



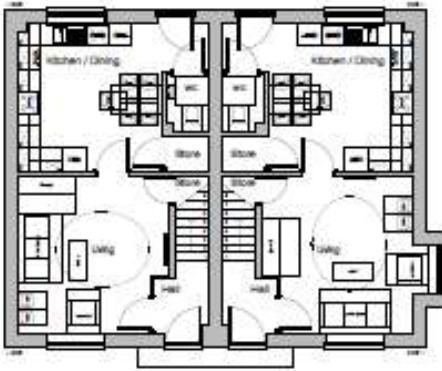
Block Plan



Access into the site via Edgeworth Close



Housetypes 1-2



BR2A & BR2 Ground Floor Plan - 2BSP
Page 1-2
BR2A - 42.1 sqm
BR2 - 41.8 sqm



Front Elevation



Side Elevation 1

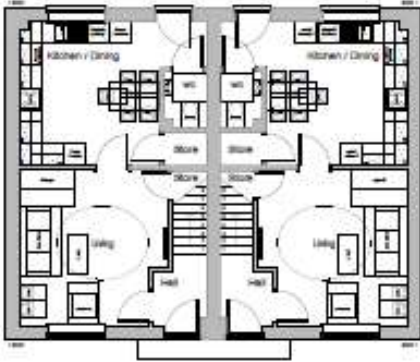


Rear Elevation



Side Elevation 2

Housetypes plots 3-4



BP2 Ground Floor Plan - SBSP
Plots 3-4
-11.8 sqm



Front Elevation



Rear Elevation

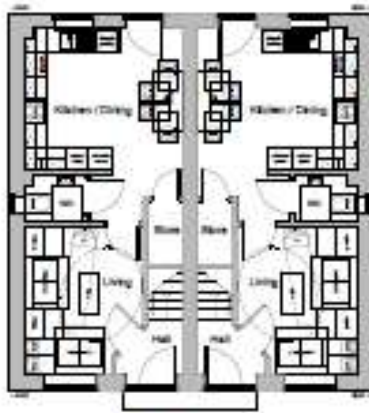


Side Elevation 1



Side Elevation 2

Housetypes plots 5-10



BB 16 Ground Floor Plan - 2807
Plots 5, 6, 7, 8 and 9, 10
30.0 sqm



Front Elevation



Side Elevation 1

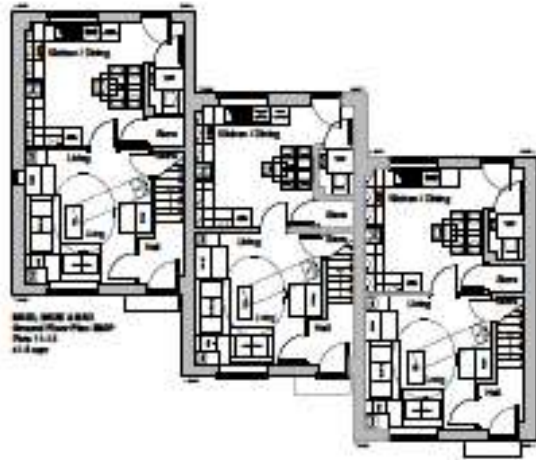


Rear Elevation

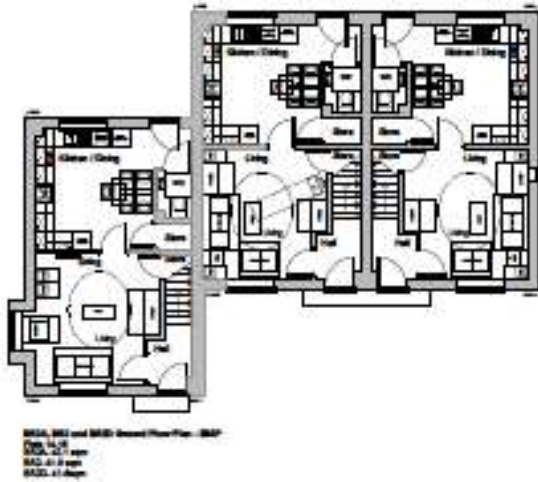


Side Elevation 2

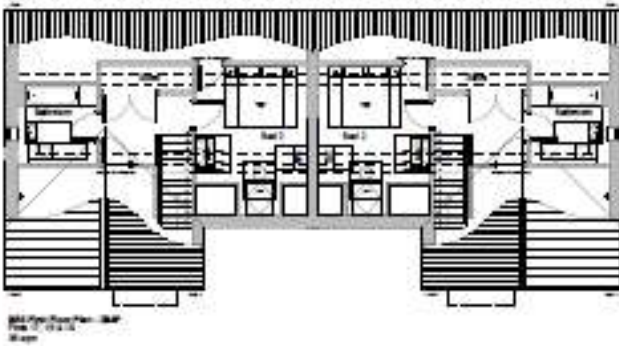
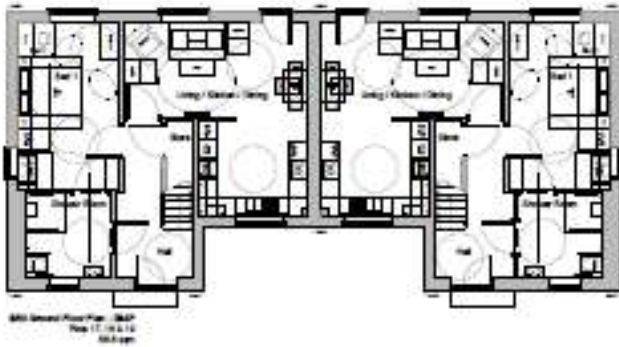
Housetypes 11-13



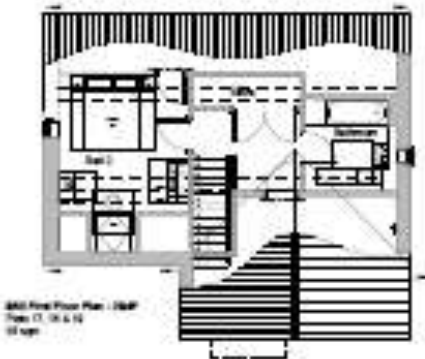
Housetypes 14-16



Housetypes plots 17-18



Housetypes plot 19



Streetscenes plots 1-4



Streetscenes plots 5-10



Streetscenes plots 11-14



Streetscenes plots 14-16



Streetscenes plots 17-19

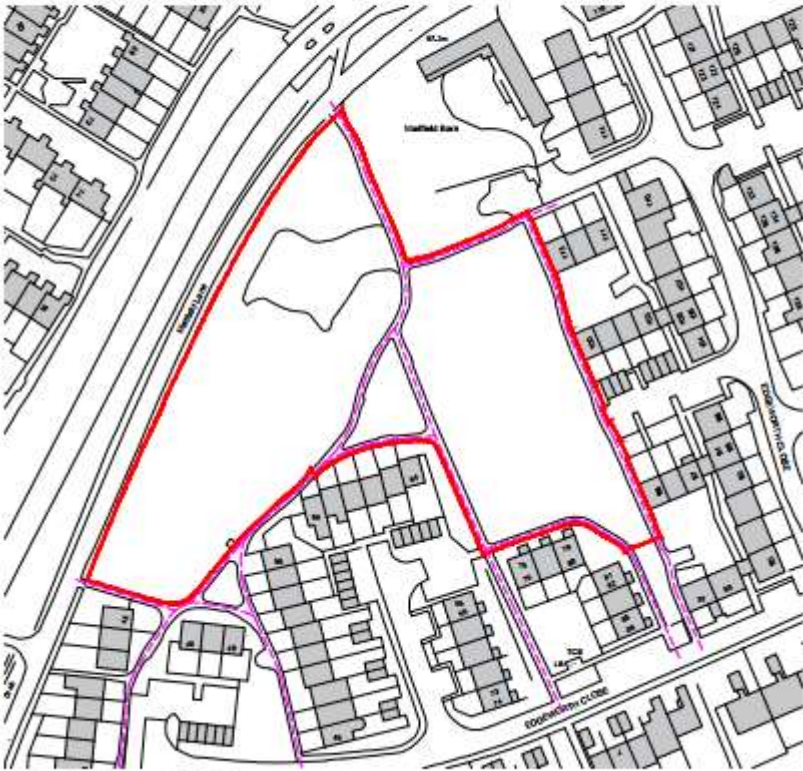


Enhanced Open Space Area



Connectivity around and within the site

- SITE BOUNDARY
- - - PROPOSED PUBLIC CONNECTIVITY
- EXISTING PUBLIC CONNECTIVITY



Existing Public Connectivity Routes



Proposed Public Connectivity Routes