

# Planning Committee

**Wednesday 28<sup>th</sup> October 2020**



[www.redditchbc.gov.uk](http://www.redditchbc.gov.uk)



# **17/01357/FUL**

R/O Victoria House, Astwood Bank, Redditch,  
Worcestershire, B96 6DS

Proposed three two-bedroom flats

Recommendation: Granted



[www.redditchbc.gov.uk](http://www.redditchbc.gov.uk)

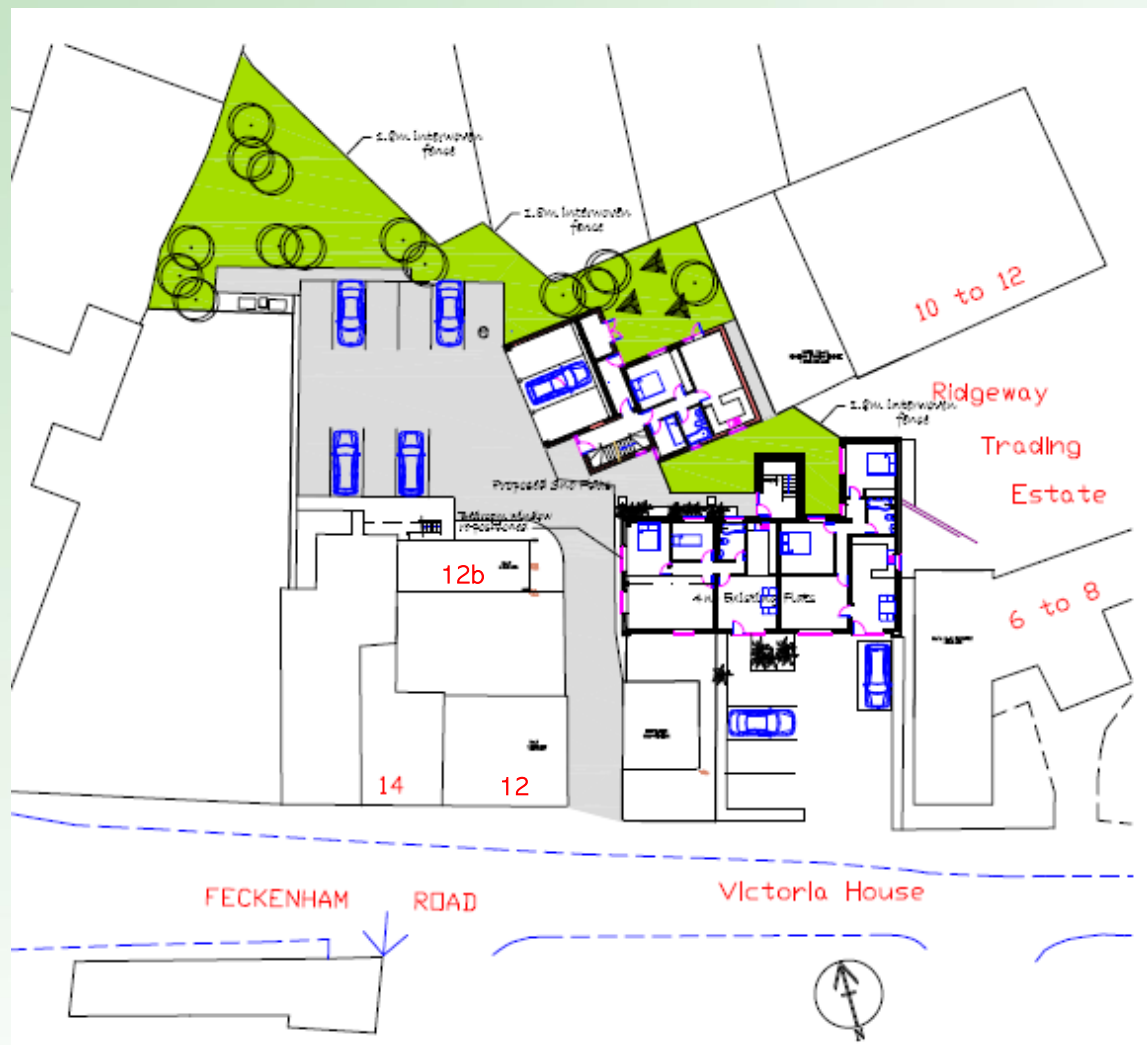


# Location Plan





# Site Plan



REDDITCH BOROUGH COUNCIL

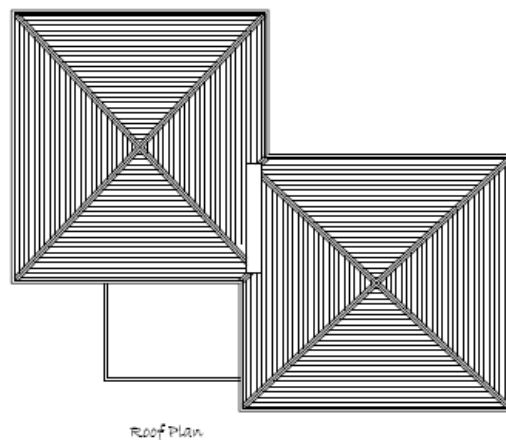
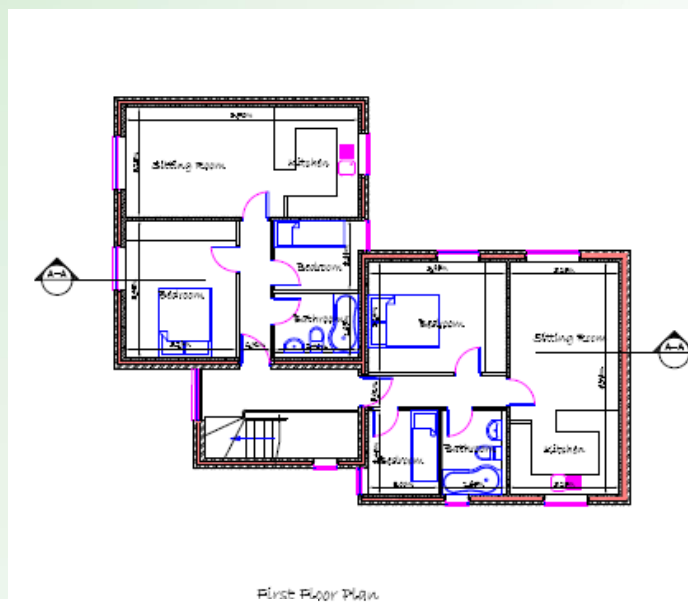
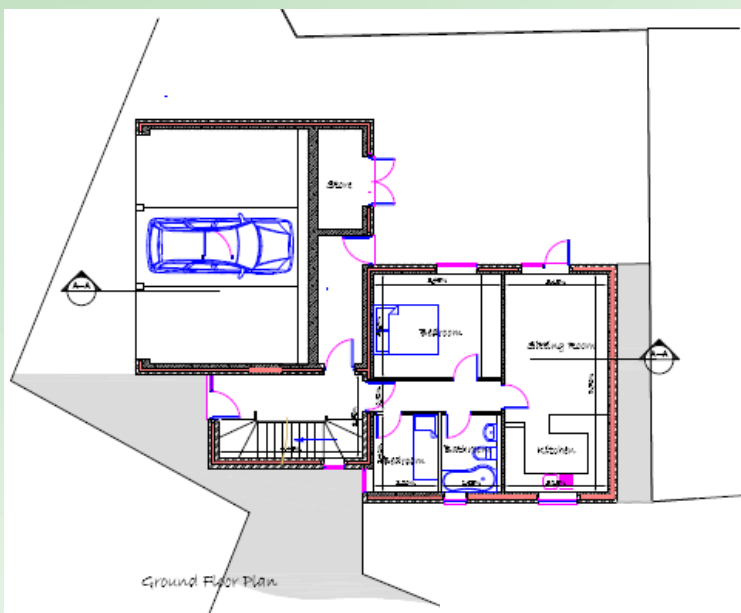


*making  
a  
difference*

[www.redditchbc.gov.uk](http://www.redditchbc.gov.uk)



# Proposed Plans





# Proposed Elevations



West Elevation

South Elevation



North Elevation

East Elevation

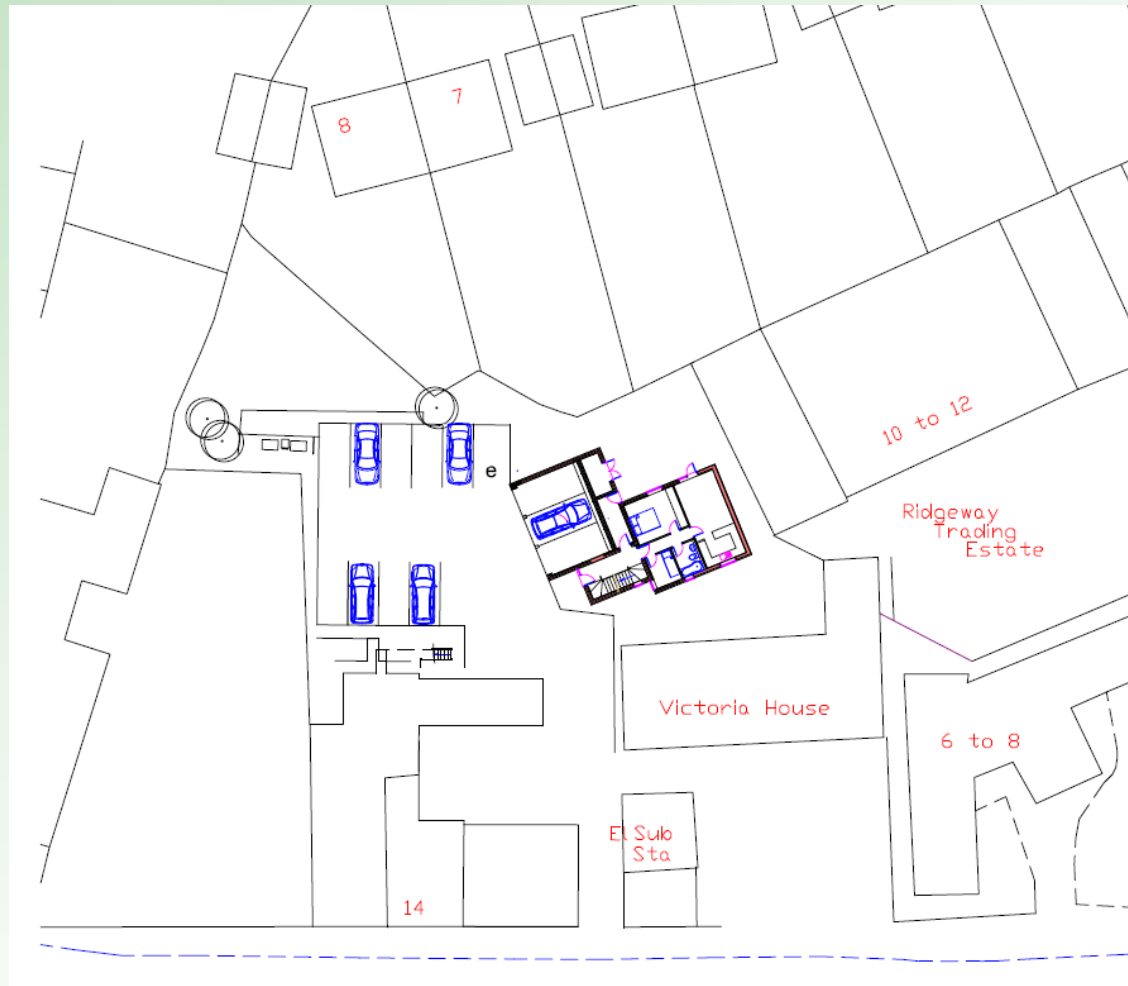
REDDITCH BOROUGH COUNCIL

*making  
a  
difference*

[www.redditchbc.gov.uk](http://www.redditchbc.gov.uk)



# Site Plan





# Aerial Photo



REDDITCH BOROUGH COUNCIL

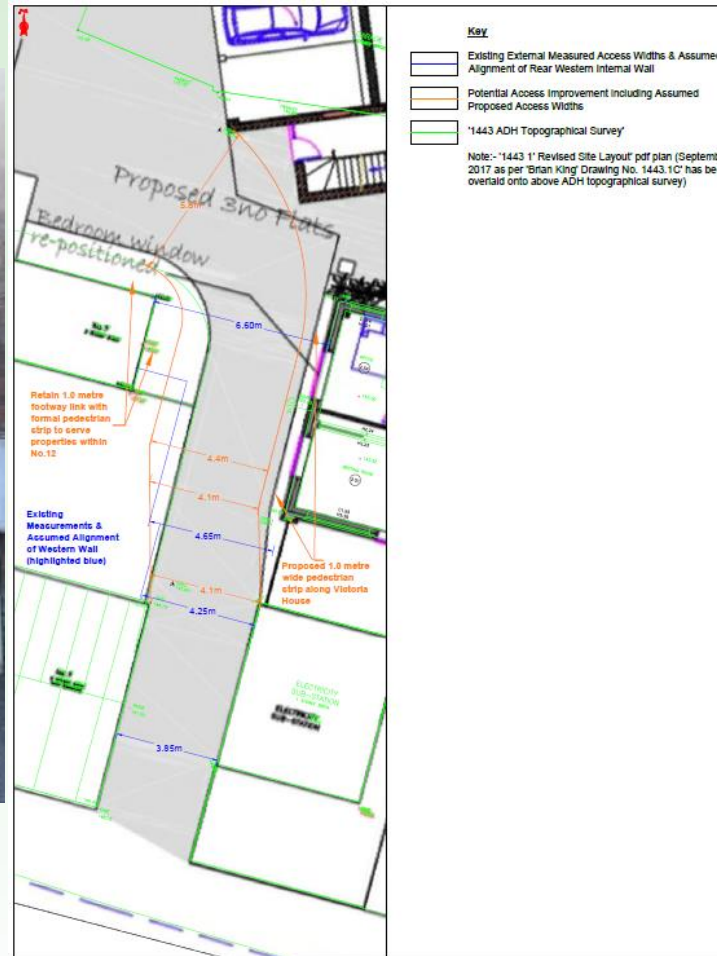


*making  
a  
difference*

[www.redditchbc.gov.uk](http://www.redditchbc.gov.uk)



# Change to Access





# Site Photos - Access



**REDDITCH** BOROUGH COUNCIL

*making  
a  
difference*

[www.redditchbc.gov.uk](http://www.redditchbc.gov.uk)



# Site Photos – Street Scene



**REDDITCH** BOROUGH COUNCIL

*making  
a  
difference*

[www.redditchbc.gov.uk](http://www.redditchbc.gov.uk)



# Site Photos – Location of Development



**REDDITCH** BOROUGH COUNCIL



*making  
a  
difference*

[www.redditchbc.gov.uk](http://www.redditchbc.gov.uk)