

20/01320/S73

Former Redditch Trades and Labour Club, 38-40 Bromsgrove Road, Redditch

Amendment to condition 2 as per approval 2016/024/FUL
Amendments to site layout, with reduction in carparking bays, changes to building footprint and position, removal of steps in building (height). Adjustment to external levels. Amendments to elevations, including number and positions of dormers and windows. Omission of gate to undercroft. Amendments to internal layout and change in unit mix.

Recommendation: GRANT planning permission subject to conditions

Site location plan



Photograph of the site



Approved scheme 2016/024/FUL



2016/024/FUL Approved floor plans



NEW APARTMENTS, BROMSGROVE ROAD &
BRITTEN STREET, REDDITCH

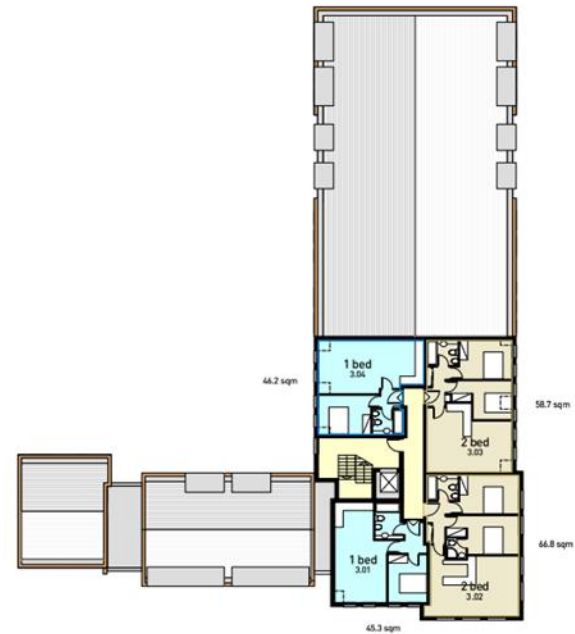
Revision ZL - 40 units: 26 No. 1 bed apartments,
& 14 No. 2 bed apartments.

May 2019 1:125

2016/024 Approved floor plans



PROPOSED SECOND FLOOR



PROPOSED THIRD FLOOR

NEW APARTMENTS, BROMSGROVE ROAD &
BRITTEN STREET, REDDITCH

Revision ZL - 40 units: 26 No. 1 bed apartments,
& 14 No. 2 bed apartments.

May 2019 1:125

2016/024/FUL Approved streetscenes



PROPOSED BROMSGROVE ROAD ELEVATION



PROPOSED BRITTEN STREET ELEVATION

NEW APARTMENTS, BROMSGROVE ROAD &
BRITTEN STREET, REDDITCH
Revision ZL - 40 units: 26 No. 1 bed apartments,
& 14 No. 2 bed apartments.
May 2019 1:125

2016/024/FUL Approved courtyard elevations



PROPOSED INNER COURTYARD ELEVATION
Looking East



PROPOSED INNER COURTYARD ELEVATION
Looking South

NEW APARTMENTS, BROMSGROVE ROAD &
BRITTEN STREET, REDDITCH

Revision ZL - 40 units: 26 No. 1 bed apartments,
& 14 No. 2 bed apartments.

May 2019 1:125

Proposed revised scheme



Revised ground and first floor plan



Revised second and third floor plan



Revised elevations



Proposed Bromsgrove road elevation



Proposed Britten street elevation



Proposed inner courtyard elevation south



Proposed inner courtyard elevation east

Orange dash line indicating outline of approved scheme



Direct comparison of the two layouts



Approved scheme



Revised scheme

Materials



Metal double glazing windows,
Anthracite grey finish.



Corner windows, Zinc effect finish.

Paved stone roof.



Metal powder coated railings cladding
front area of landscaped gardens with
pedestrian gate to Bramsgrove road.



Darker red brick finish with
grey/sand cement mortar to
four storey corner section
only.



Fair red finish with
red/brown/sand cement
mortar to all remaining
elevation infillwork.



Tarmacotta blocks