



North Worcestershire
Community Safety Partnership

Partnership Plan 2021-24

CONTENTS

	Page
Foreword	3
Introduction	4
North Worcestershire Community Safety Partnership	5
How We Work Together	6
Our Priorities	11
Contact Details	19

FOREWORD

I am pleased to present North Worcestershire Community Safety Partnership's (NWCSP) Community Safety Plan for 2021-24. It outlines our priorities over the next three years and the actions we will take to address them.

NWCSP is committed to building on the progress made in recent years and will continue to drive down crime and disorder across Bromsgrove, Redditch and Wyre Forest. Our partnership is innovative and full of people who are passionate about creating a safe environment for our communities.

Our aim for this plan is to continue to build safer, stronger and more confident communities whilst navigating and adapting to the challenges brought about by the Covid-19 global pandemic.

We will do this by working together to decrease crime, improve community safety and address the threats, harms and risks associated with criminality; and at the same time implementing and responding to the requirements and regulations necessary to support our communities to move toward post-Covid recovery.

In the following pages, we have captured the areas of work that we will focus on as a partnership and the actions we will take to achieve our aims. I hope by reading this plan, you will see how NWCSP works together toward these aims, for the benefit of all who live, work in and visit our towns and villages.

Sue Hanley
Chair of the North Worcestershire Community Safety Partnership

INTRODUCTION

This partnership plan has been prepared by NWCSP to help set out its community safety objectives and aims for 2021-24 in the context of the Covid 19 pandemic.

Since the first national lockdown implemented in March 2020 Covid-19 has continued to pose significant challenges to public agencies, local businesses and voluntary & community sector organisations as they work to support, protect and maintain services to our local residents.

Our partners continue to meet the ongoing challenges of redesigning processes and altering ways of working to provide services that are Covid-safe for both customers and employees alike and this has meant significant change, at an extraordinarily quick pace. Despite this, there also remains a consistent level of customer service and support offered by all partner agencies whilst adapting to and working within the various restrictions and requirements of national Coronavirus policy and regulation.

Both individually and collectively, Community Safety Partnership members are managing the effects of this unprecedented situation, constantly adapting service delivery and working practices in order to continue to support customers and clients, many of whom have been deeply affected by the many and sometimes life-changing consequences of the coronavirus pandemic.

Whilst the long term effect Covid-19 will have on crime, disorder and anti-social behaviour is unknown; this Partnership Plan is intended to inform residents, parish and town councils, and other stakeholders including the West Mercia Police and Crime Commissioner of the specific community safety actions NWCSP will carry out during the forthcoming years.

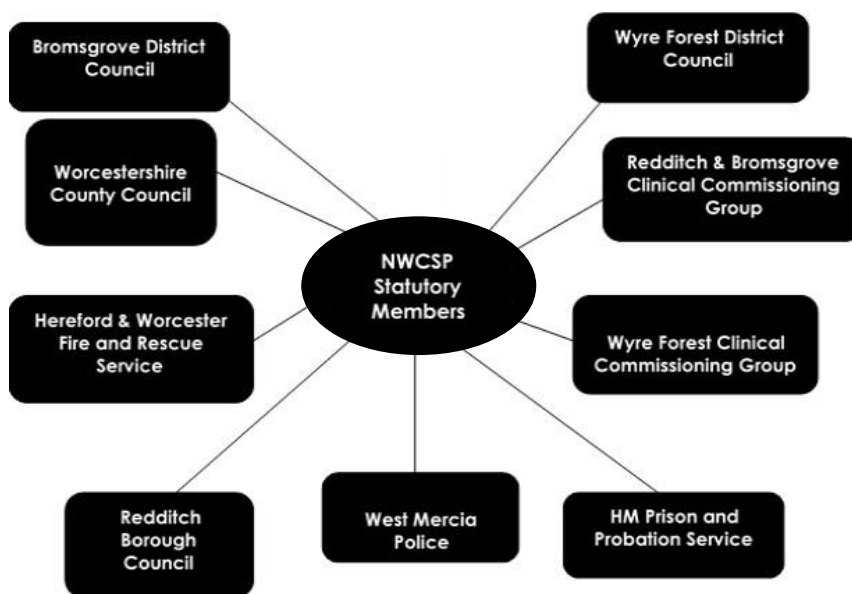
The Partnership vision for North Worcestershire is: -

‘to keep North Worcestershire a safe place to live, work and visit’.

NORTH WORCESTERSHIRE COMMUNITY SAFETY PARTNERSHIP (NWCSP)

NWCSP is a strategic partnership, bringing agencies together to reduce crime and offending in accordance with the Crime and Disorder Act 1998, Police Reform and Social Responsibility Act 2011 and the Anti Social Behaviour, Crime and Policing Act 2014.

The Partnership is made up of the following statutory organisations, together with a wider range of local agencies such as victim support services, housing associations and voluntary & community sector organisations. NWCSP aims to provide added value to the individual partnership agencies' day to day functions; working together to reduce the risks and harms associated with crime, disorder and anti-social behaviour.



NWCSP could not achieve its objectives without help from the public. It is the responsibility of everyone to play their part in helping to make themselves and their communities safer. Anyone can contribute to crime reduction and prevention by reporting crime and disorder when it happens; supporting criminal justice agencies by providing information and intelligence about offences that have taken place; and by taking responsibility for personal safety and the safety of others, particularly the most vulnerable in society.

For ideas on other ways to get involved, please visit www.nwcsp.org

HOW WE WORK TOGETHER

The Partnership has a statutory duty to produce an annual Strategic Assessment which provides the data and evidence for proposed community safety activities and actions, as set out in the Partnership Plan. The Strategic Assessment also provides the framework for the CSP to measure performance and progress towards meeting its agreed outcomes for each of the community safety priorities.

Usually the Strategic Assessment collates the latest information and data, detailing recent levels of crime and ASB. This allows the CSP to consider the current position and assess any changing circumstances or emerging issues that could require multi-agency approaches or interventions. However, this year Covid-19 has had a significant effect on crime figures and data reporting.

Following a report by the Office for National Statistics Centre for Crime and Justice (ONS) released on 3rd Feb 2021, statisticians stated that:

“The coronavirus pandemic and related lockdown restrictions have resulted in fluctuations in the level of crime experienced in England and Wales. Data from the survey [Telephone operated Crime Survey for England and Wales 2020] showed decreases in crime at the start of the pandemic, with rises seen over the summer months, specifically in theft, following the easing of lockdown measures, with overall crime now back at pre-lockdown levels of January to March 2020. There were also fluctuations in police recorded crime, but total recorded offences for July to September 2020 were below that seen in the same period in 2019.”

[ONS - Crime in England and Wales: year ending September 2020](#)

In light of the challenge of 2020/21 crime data, the Partnership has also utilised Strategic Assessments and other CSP data products from previous years to inform priority setting for the refreshed Partnership plan. Alongside this, certain other considerations are also taken into account, such as:

- Level of harm – the impact offences have on victims and wider communities.

- Community concern – the level of priority that local residents attribute to a particular offence.
- Partnership added value – the extent to which multi-agency working can enhance the ability of agencies to tackle a particular pattern of offending behaviour.

This year's priority setting has also been developed with due regard to:

- Existing and emerging national priorities
- NWCSP's statutory duties and obligations
- West Mercia Police and Crime Commissioner's (PCC) Plan – Safer West Mercia
- Policing priorities included in the West Mercia Force Control Strategy
- Worcestershire Safer Communities Board's Community Safety Agreement

West Mercia Police and Crime Commissioner

John Champion was re-elected as the Police and Crime Commissioner for West Mercia on 6th May 2021. Mr Champion's focus will be on increasing the number of police officers on the streets and ensuring they are visible and accessible to communities. He has also prioritised the fight to reduce crime, bring criminals to justice and spend the public's money on efficient and effective policing. The PCC will be producing a new Police and Crime Plan, which will set out the strategic aims and priorities for his second term in office.

The PCC has a duty to co-operate with CSPs to reduce crime and disorder and there is a reciprocal duty on CSPs to collaborate with the PCC. The PCC and the CSP must also have regard for each other's priorities within their respective plans. PCC's vision has focused on four key areas:

- Building a More Secure West Mercia
- Reassuring West Mercia's Communities
- Putting Victims and Witnesses First
- Reforming West Mercia

This North Worcestershire CSP Plan has been developed to ensure that it aligns with the PCC's vision for policing across West Mercia and will continue to support the aims and objectives of the next West Mercia Police and Crime Plan.

Serious Violence Statutory Duty

In July 2019, the Government announced plans for a new legal duty on public bodies to prevent and tackle serious violence. The new 'public health duty' will cover the police, local councils, local health bodies such as NHS Trusts, education representatives and youth offending services.

The Home Office's intention is that the duty will ensure that relevant services work together to share data, intelligence and knowledge to understand and address the root causes of serious violence including knife crime. It will also allow those services to target their interventions to prevent and stop violence altogether.

The Government intends to amend the Crime and Disorder Act 1998 to ensure that serious violence is an explicit priority for Community Safety Partnerships, by making sure they have a strategy in place to tackle violent crime.

At the time of writing, NWCSP is still waiting for further information about what this new duty will mean in practice for the Partnership and will respond accordingly to any requirements emerging from the government's Serious Violence Strategy and any related legislation.

Delivering the Partnership Plan

The key to delivering North Worcestershire's priorities is effective and strong partnership working, as no individual agency alone can deliver the objectives of the CSP.

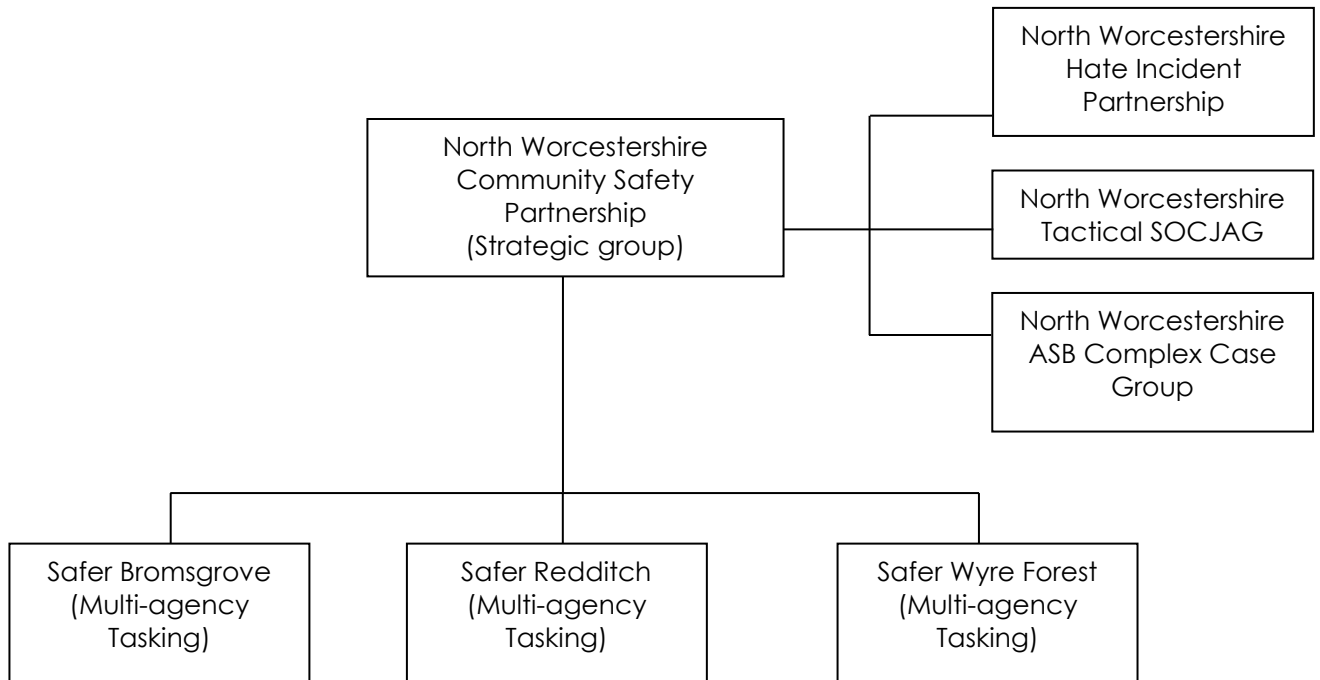
As a partnership we will set and monitor performance indicators that reflect the priorities, in order to measure progress toward the Partnership's delivery outcomes. We will measure and assess our activities a minimum of four times a year to check that we are achieving positive outcomes and making progress toward the aims of the plan.

Effective crime reduction relies on understanding what and where our problems are. This enables us to direct partnership resources efficiently and effectively – to the right place at the right time. Crime trends and patterns are regularly monitored and NWCSPP receives regular reports from key officers to enable collective monitoring of actions, performance and outcomes.

The Partnership consists of senior managers from the statutory Responsible Authorities alongside co-operating organisations and the Elected Councillors with responsibility for community safety, from each of the member Local Authorities. To provide oversight of the work of the Partnership, Elected Councillors hold community safety specific scrutiny committees which inspect the Partnership's performance. West Mercia's PCC is the public's elected representative for all policing matters and as such Community Safety Partnerships and the PCC have a duty to collaborate and pay due regard to each other's action plans. In fulfilling this duty, the PCC maintains strong links with each of the Community Safety Partnerships within the West Mercia force area.

Operational delivery of the partnership plan is carried out by a number of community safety sub-groups and forums. Safer Groups in each of the district areas are the core delivery arm of the CSP, where much of the on-the-ground activity is developed and undertaken. These groups co-ordinate partnership activity at an operational district level to solve current and emerging local problems.

NWCSP Structure



OUR PRIORITIES

Partners use the Strategic Assessment and other sources to assess and prioritise the key crime and disorder issues that require multi-agency action within the Partnership's area of focus. When setting and reviewing CSP priorities consideration is also given to the local Policing objectives in the area. Partnership priorities are reviewed regularly and refreshed annually to ensure the CSP is always focused on addressing the issues that affect local communities the most.

The following priorities have been agreed by partners for 2021/22:

Priority	Aim: To Reduce/Prevent
Violence and Abuse	Public Place Violence
	Domestic Abuse and Sexual Violence
	Child Sexual Exploitation
Theft and Acquisitive Crime	Theft from Stores
	Burglary, Doorstep Crimes & Scams
	Rural & Business Crime
ASB, Damage and Nuisance	Neighbourhood Nuisance
	Criminal Damage
	Environmental Problems and Deliberate Fires
Protecting Vulnerable Communities	Hate Crime & Targeted Harassment
	Criminal Exploitation, County Lines & Modern Slavery
	Violent Extremism
Reducing the Harm Caused by Drugs & Alcohol	
Reducing Reoffending	

A summary of the type of activity the Partnership will undertake to address these priorities is provided below.

Priority: To Reduce Violence and Abuse

Public Place Violence - Summary of CSP Activity:

- Work with local businesses, regulatory services and public health to develop further understanding and intelligence around public place violence; particularly related to the Night-time Economy as town centres and licensed premises move toward post Covid recovery.
- Respond to and implement any requirements emerging from the government's Serious Violence Strategy and any related legislation.
- District Safer Groups to develop and co-ordinate specific actions and initiatives in response to local public place violence issues.

Domestic Abuse and Sexual Violence - Summary of CSP Activity:

- Through MARAC and commissioned Domestic Abuse services, continue to develop and improve agency responses to high risk victims.
- Work with Domestic Abuse and Sexual Violence support services to develop and promote initiatives that focus on increasing reporting, early help and education.
- Increase and promote training opportunities to ensure all services are able to identify and offer support to customers at risk of or experiencing Domestic Abuse or Sexual Violence.
- Work with services to ensure all victims are able to access the right support to meet their needs, including male victims, victims from Black Asian and Minority Ethnic communities and victims of historical sexual violence.
- Through Drive, the Worcestershire Domestic Abuse Perpetrator Programme work with services to reduce offending and prevent risk and harm.
- Respond to any legislative requirements emerging from the Domestic Abuse Bill 2020 and the Violence against Women and Girls Strategy 2021-2024.
- Implement learning and recommendations from Domestic Homicide Reviews

Child Sexual Exploitation - Summary of CSP Activity:

- Support and expand the community safety Respect Programme in partnership with local schools to continue to provide therapeutic support to young people at risk of exploitation.
- Promote and deliver training and awareness raising to ensure parents, support workers and service providers are able to identify and support young people vulnerable to exploitation.
- Through work with schools, the local Respect Programme and other providers, to ensure children and young people have access to education on healthy relationships.
- Work with the Children's Safeguarding Partnership to promote Get Safe, the countywide safeguarding approach to addressing issues of Child Exploitation. [GET SAFE = **G**angs, **S**exual **E**xploitation, **T**rafficking, **M**odern Day **S**lavery **A**bsent or **M**issing, **F**orced Marriage, **C**riminal **E**xploitation]

Priority: To Reduce theft and acquisitive crime

Theft from Stores - Summary of CSP Activity:

- Work with partners such as the North Worcestershire Economic Development and Regeneration (NWEDR) Unit, business networks and retail partnerships to identify opportunities for crime prevention, improving store security and improved data collection and analysis.
- Work with Integrated Offender Management (IOM) partners in the criminal justice system, to ensure prolific and persistent offenders are brought to justice.
- Work with commissioned Drug and Alcohol services and IOM to promote support options and interventions to reduce reliance on theft to support addictions.

Burglary, Doorstep Crimes and Scams - Summary of CSP Activity:

- Raise awareness of criminality and provide residents with the tools and information to protect their homes and property.
- Offer support, information and advice to Burglary victims to reduce the risk of re-victimisation.
- Promote and expand the CSP's Nominated Neighbour scheme to encourage residents to look out for and protect the most vulnerable members of their local communities.
- Promote the PCC's SmartWater Village Scheme and the Police We Don't Buy Crime initiative to support a co-ordinated approach to protecting local rural areas.
- Raise awareness of scams, fraud and cyber-crime, focusing on the most vulnerable and those most at risk of being targeted.
- Deliver seasonal initiatives to raising awareness and provide advice to the public on how to reduce the risk of becoming a victim of these crimes.
- Targeted joint-agency work to engage with and raise the awareness of residents/communities in areas where issues such as scams and distraction burglary are more prevalent (e.g. elderly residents).

Rural and Business Crime - Summary of CSP Activity:

- Promote the PCC's SmartWater Scheme and the Police We Don't Buy Crime initiative to support a co-ordinated approach to protecting local businesses communities and rural areas.
- Support and promote business community and rural area networks, such as Farm Watches and Business Links, providing crime prevention information and sharing intelligence to prevent victimisation.
- Support West Mercia PCCs Business and Rural crime strategies and work with local affected communities to understand and address the issues they are facing.

Priority: To reduce antisocial behaviour (ASB), damage and nuisance

Neighbour Nuisance - Summary of CSP Activity:

- Promote and utilise the powers and legislation available to the Police, Councils and other partners to tackle ASB and nuisance.
- Raise awareness of support services and provide residents with pathways to raise concerns and request action i.e. Tenancy Panels, Complaints processes, Community Trigger/ASB Case Review etc.
- Offer support, information and advice to vulnerable victims of ASB victims to reduce the risk of continued re-victimisation or escalation.
- Respond to any legislative requirements emerging from the Social Housing White Paper 2020 in relation to ASB and Safer Homes & Neighbourhoods.
- North Worcestershire ASB Complex Case Group to develop and co-ordinate specific actions and initiatives in response to local concerns about ASB issues.

Criminal Damage - Summary of CSP Activity:

- Utilise improved CCTV capabilities across North Worcestershire to identify and take action against perpetrators.
- Utilise and support the work of established Detached Youth Work teams in each district area to engage with young people in local neighbourhoods at risk of becoming involved in ASB and criminality.
- Make use of opportunities for community resolution and restorative justice with offenders to repair damage in public spaces.

Environmental Problems and Deliberate Fires - Summary of CSP Activity:

- Promote and utilise the powers and legislation available to the Councils, Regulatory Services and other partners to tackle environmental problems and crimes.
- Publicise environmental crime prosecutions and enforcement action taken against offenders in order to prevent and deter further offending.

- Work with partners to improve data collection and shared intelligence around environmental problems and deliberate fires in order to identify patterns of behaviour and target resources more effectively.
- Raising awareness of the dangers of fire raising and deliver fire safety messages within local communities.

Priority: Protecting Vulnerable Communities

Reducing Hate Crime and Targeted Harassment - Summary of CSP Activity:

- Through North Worcestershire Hate Incident Partnership continue to raise awareness of hate crime in all its forms, providing appropriate support information and increasing opportunities to report incidents securely and safely.
- Offer support, information and interventions to vulnerable victims of Hate Incidents/crimes to reduce the risk of continued re-victimisation or escalation.
- Increase and promote training opportunities to ensure all services are able to identify and offer support to customers at risk of or experiencing Hate Crime and Targeted Harassment.

Reducing Criminal Exploitation, County Lines & Modern Slavery - Summary of CSP Activity:

- Through North Worcestershire Serious Organised Crime Joint Action Group (SOCJAG) continue to raise awareness of organised crime and exploitation across agencies and with the public.
- Support and engage with the SOCJAG and MATE processes to identify areas of concern, share intelligence and take joint action to disrupt Organised Crime Groups (OCGs) operating in our areas.
- Further develop our knowledge and understanding of criminal exploitation, county lines and modern slavery locally, including areas and communities that may be more vulnerable to targeting by criminals.
- Raise awareness and provide support and information to services, businesses and organisations likely to come into contact with those vulnerable to exploitation.

Preventing Violent Extremism- Summary of CSP Activity:

- Through Worcestershire Prevent Strategy Group to raise awareness of Prevent and organisations statutory duties under the Counter-Terrorism and Security Act 2015 (as amended)
- Support and engage with the Channel Process and ensure that support is available for young people and vulnerable adults at risk of radicalisation. SOCJAG and MATE processes to identify areas of concern, share intelligence and take joint action to disrupt Organised Crime Groups (OCGs) operating in our areas.
- Further develop our knowledge and understanding of terrorism and risks of radicalisation locally, including areas or communities that may be more vulnerable to targeting by extremists.

Cross Cutting Themes

Reducing the Harm caused by Drugs and Alcohol and Reducing Re-offending remain cross cutting areas of work for partners that impact on all CSP priorities. NWCSP works closely with Public Health and Commissioned Drug and Alcohol Services and is also represented on the Worcestershire Reducing Reoffending Strategy Group.

NWCSP activity in these areas as part of the plan will include:

- Support and encourage joint Police and Licensing Team visits to licensed premises in North Worcestershire to ensure adherence to licensing conditions and to encourage the responsible sale of alcohol as premises move toward post Covid recovery.
- Support and facilitate the referral of vulnerable individuals at risk of exploitation to local support services to safeguard them against harm e.g. risk of cuckooing of a vulnerable tenant's property due to substance dependency.
- Use of enforcement powers e.g. Criminal Behaviour Order, to take action against identified persistent offenders engaging in ASB where behaviour is alcohol-related.
- Support and resource targeted outreach work delivered by youth workers to engage with young people at risk of drug or alcohol-related ASB.

- Promote use of Dispersal Orders and Community Protection Warning letters/Notices for those individuals repeatedly involved alcohol or drug-related crime.
- Continue work with Integrated Offender Management (IOM) partners in the criminal justice system, to ensure offenders are brought to justice.
- Seek to publicise prosecutions and enforcement action taken against offenders, where appropriate, in order to prevent and deter further offending.
- Make full use of both permanent and deployable CCTV camera systems in our district areas to deter offending behaviour, capture evidence and improve public safety.
- Share intelligence through the district Safer Groups and other CSP sub-groups to help bring offenders to justice.

CONTACT DETAILS

North Worcestershire Community Safety Partnership
www.nwcsp.org.uk

Crime Stoppers 0800 555 111
www.crimestoppers-uk.org

West Mercia Police non-emergency number 101
www.westmercia.police.uk

Hereford and Worcester Fire & Rescue Service
www.hwfire.org.uk

Bromsgrove District Council
www.bromsgrove.gov.uk

Redditch Borough Council
www.redditch.gov.uk

Wyre Forest District Council
www.wyreforestdc.gov.uk

Worcestershire County Council
www.worcestershire.gov.uk

NHS Redditch and Bromsgrove Clinical Commissioning Group
www.redditchandbromsgroveccg.nhs.uk

NHS Wyre Forest Clinical Commissioning Group
www.wyreforestccg.nhs.uk

HM Prison and Probation Service
www.gov.uk

Warwickshire and West Mercia Community Rehabilitation Company
www.westmerciaprobation.org.uk