

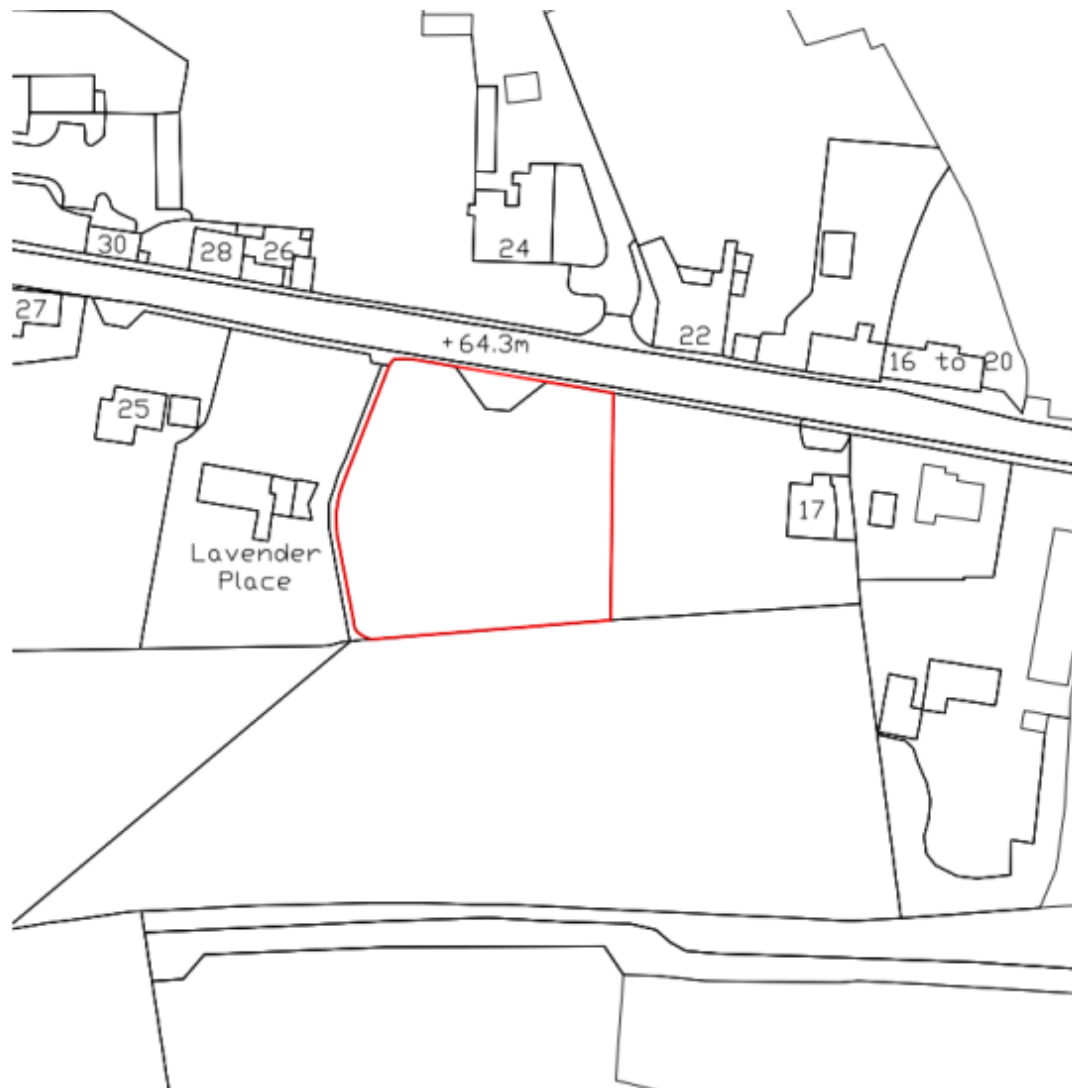
22/00817/S73

Land Adjacent to Lavender Place, Droitwich Road,
Feckenham, B96 6JE

Variation of Condition 2 of planning permission
reference 20/00599/FUL (Development of 2 dwellings)
to replace approved drawings with revisions omitting
herringbone detailing to brickwork, partial removal of
cladding, conversion of approved garage (Plot A) to
office / study and associated alterations to fenestration
together with the setting back of garage serving Plot B
further into the site

Recommendation: grant subject to conditions

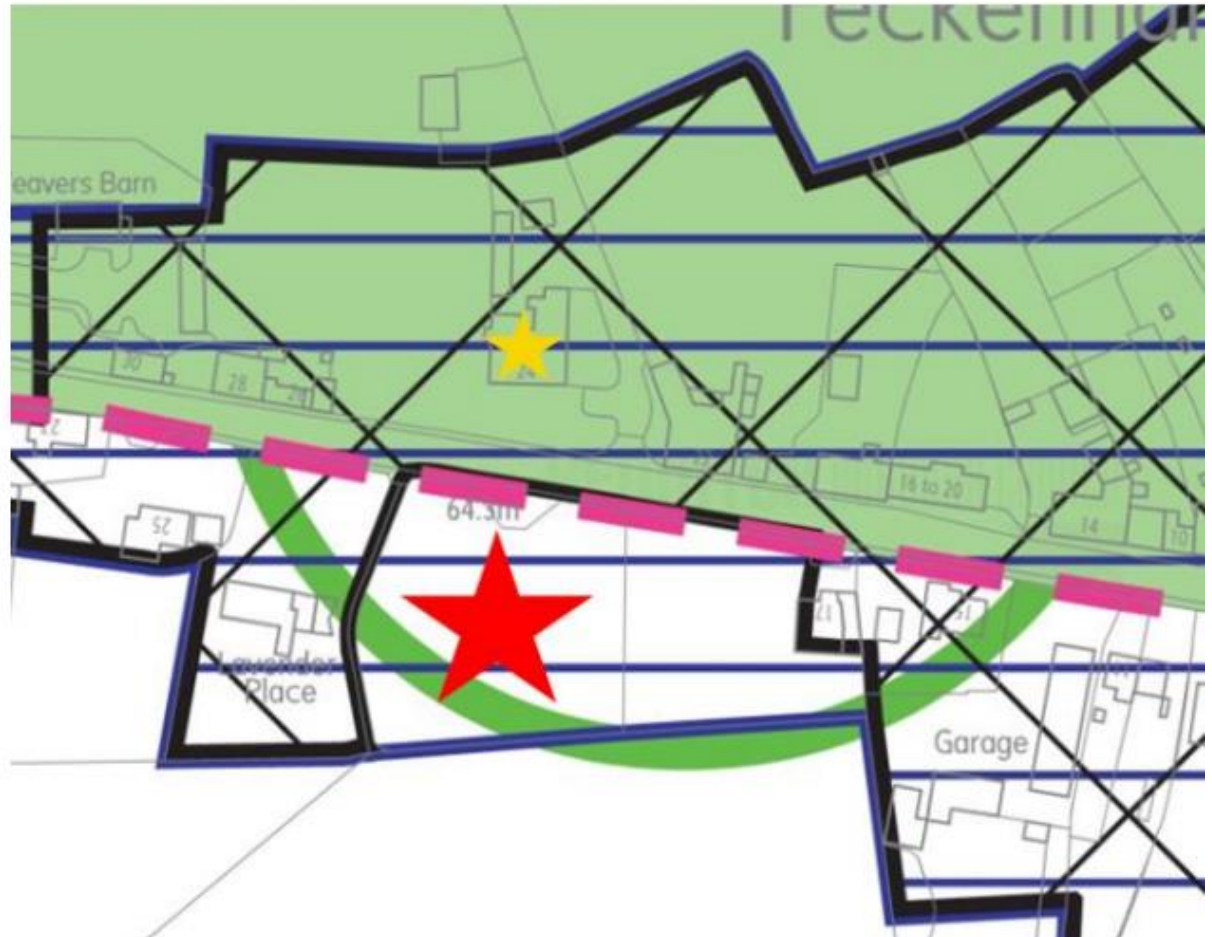
Site Location



Constraints Plan

Key

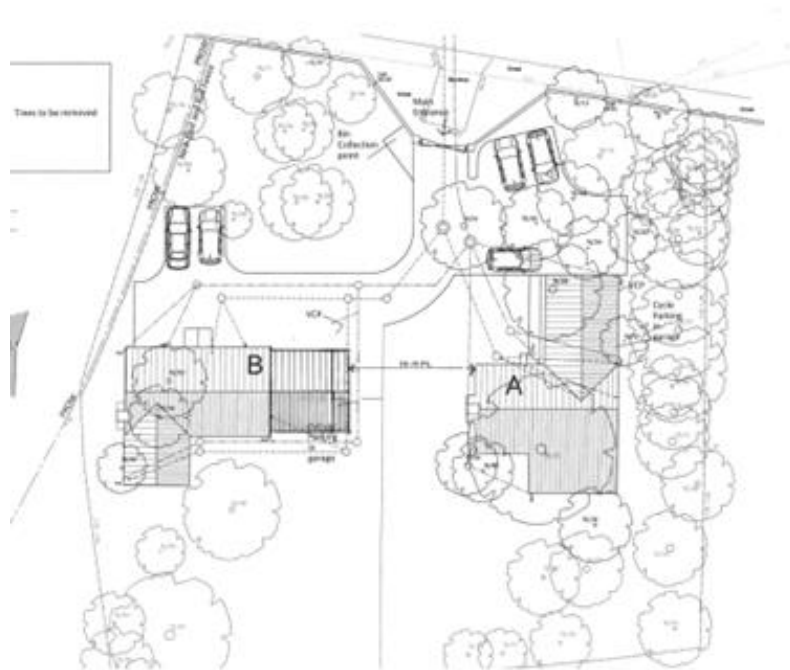
	Open Countryside
	Green Belt
	Conservation Area
	Village settlement boundary
	Grade II * Listed Building opposite site
	Application Site



Approved site plan 20/00599/FUL
(LEFT)



Proposed site plan
(RIGHT)



Approved elevations Plot A



Front Elevation



Gable Elevation 1

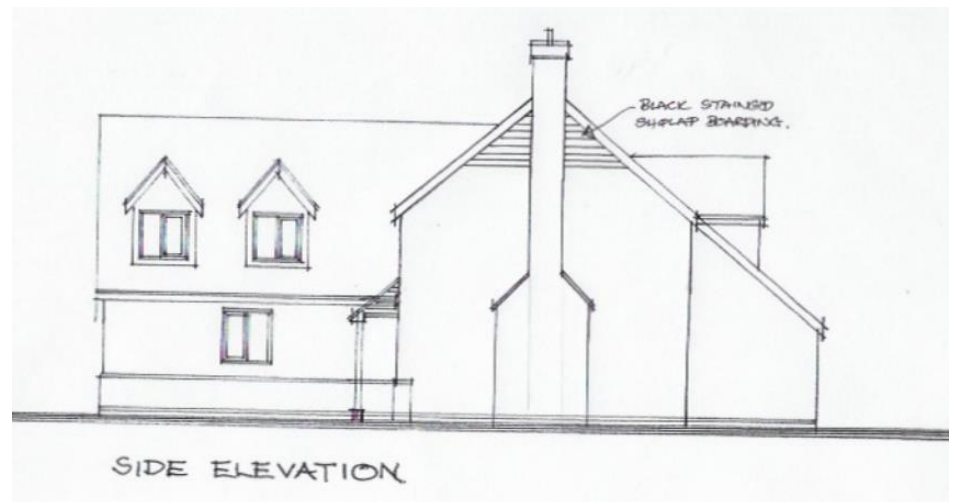
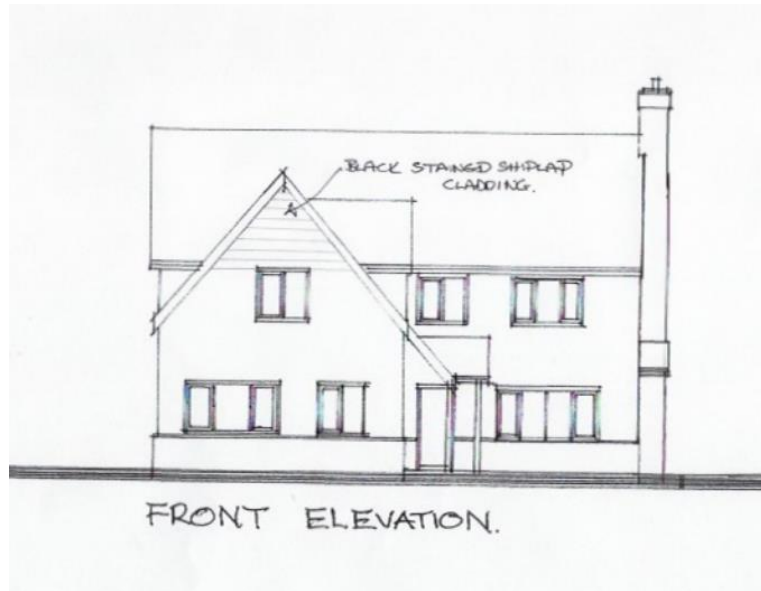


Rear Elevation

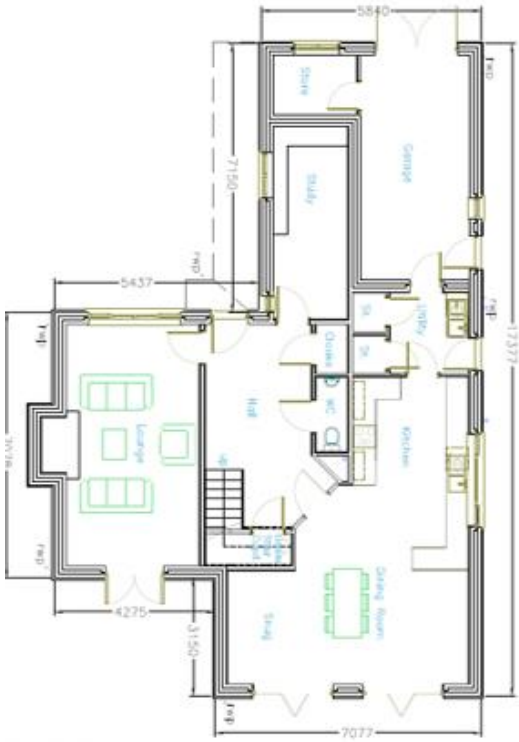


Gable Elevation 2

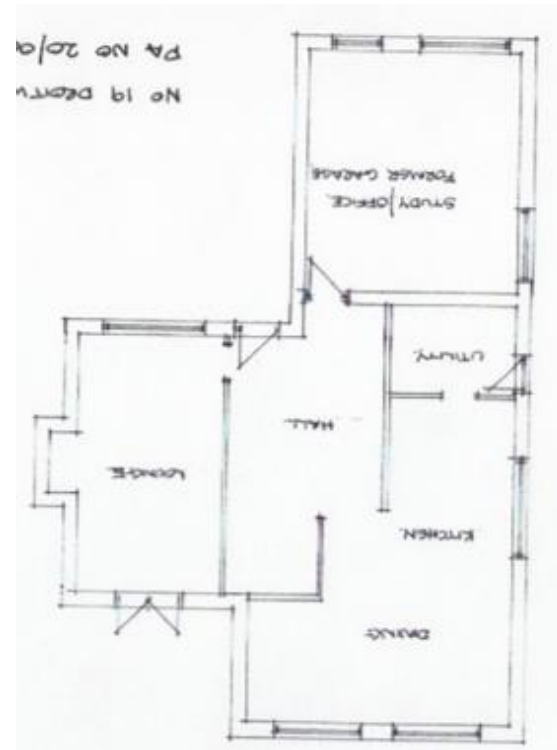
Proposed elevations Plot A



Plot A Approved ground floor plan
(LEFT)



Plot A Proposed ground floor plan (RIGHT)



Approved elevations Plot B



Proposed elevations Plot B

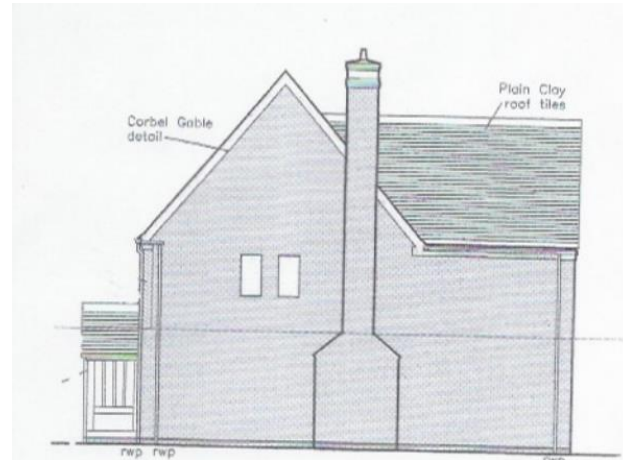


FRONT ELEVATION.

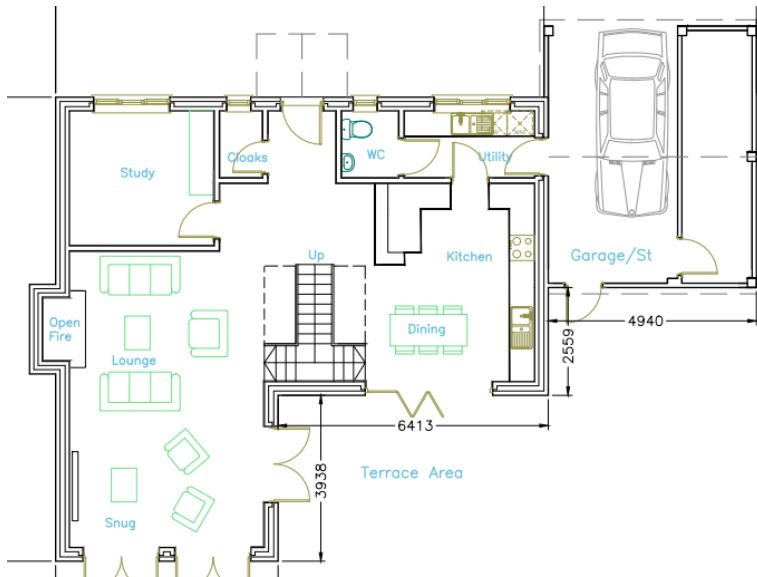


REAR ELEVATION.

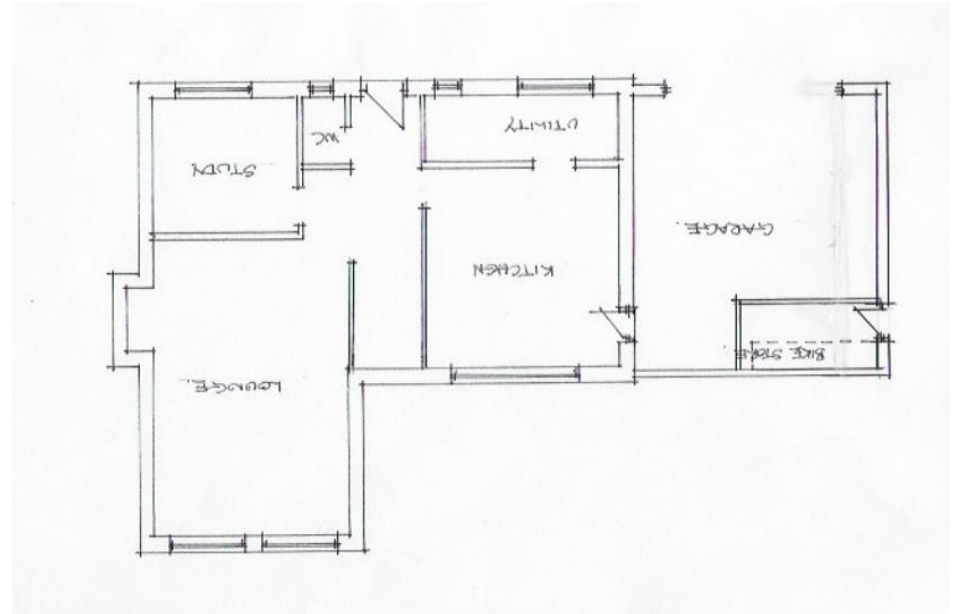
SCALE 1:100



Plot B Approved ground floor plan
(LEFT)



Plot B Proposed ground floor plan
(RIGHT)



Example of proposed detailing

Eaves



Verge



View from site entrance

