

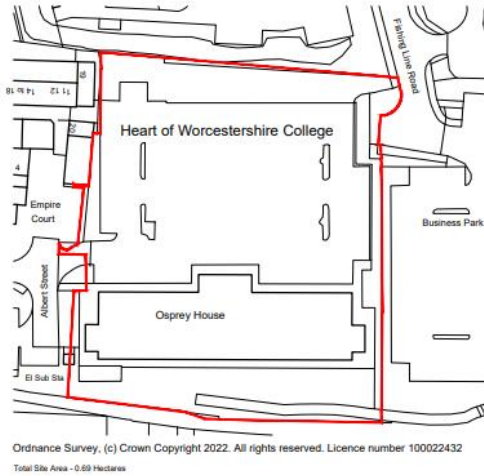
23/01108/FUL

Osprey House, Albert Street, Redditch, B97 4DE

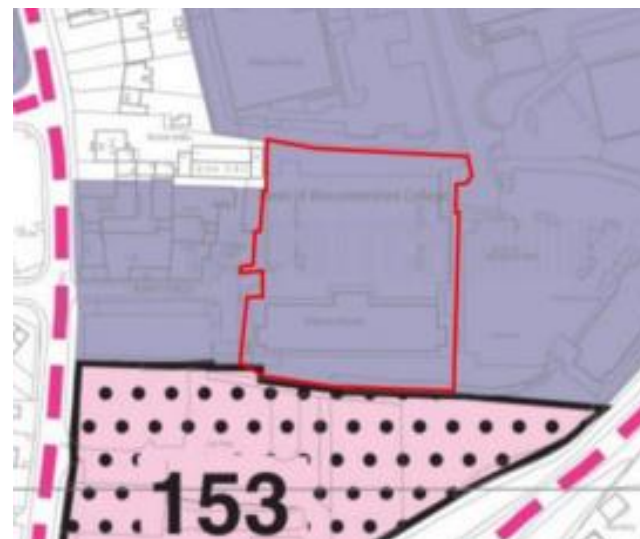
Change of use of existing building from education use (Use Class F1) to 33 supported living apartments (Use Class C2), erection of a three storey 83 bed care home (Use Class C2) with link and ancillary facilities; with associated underground parking, landscaping and ancillary works.

Recommendation: delegate to grant subject to conditions and a planning obligation

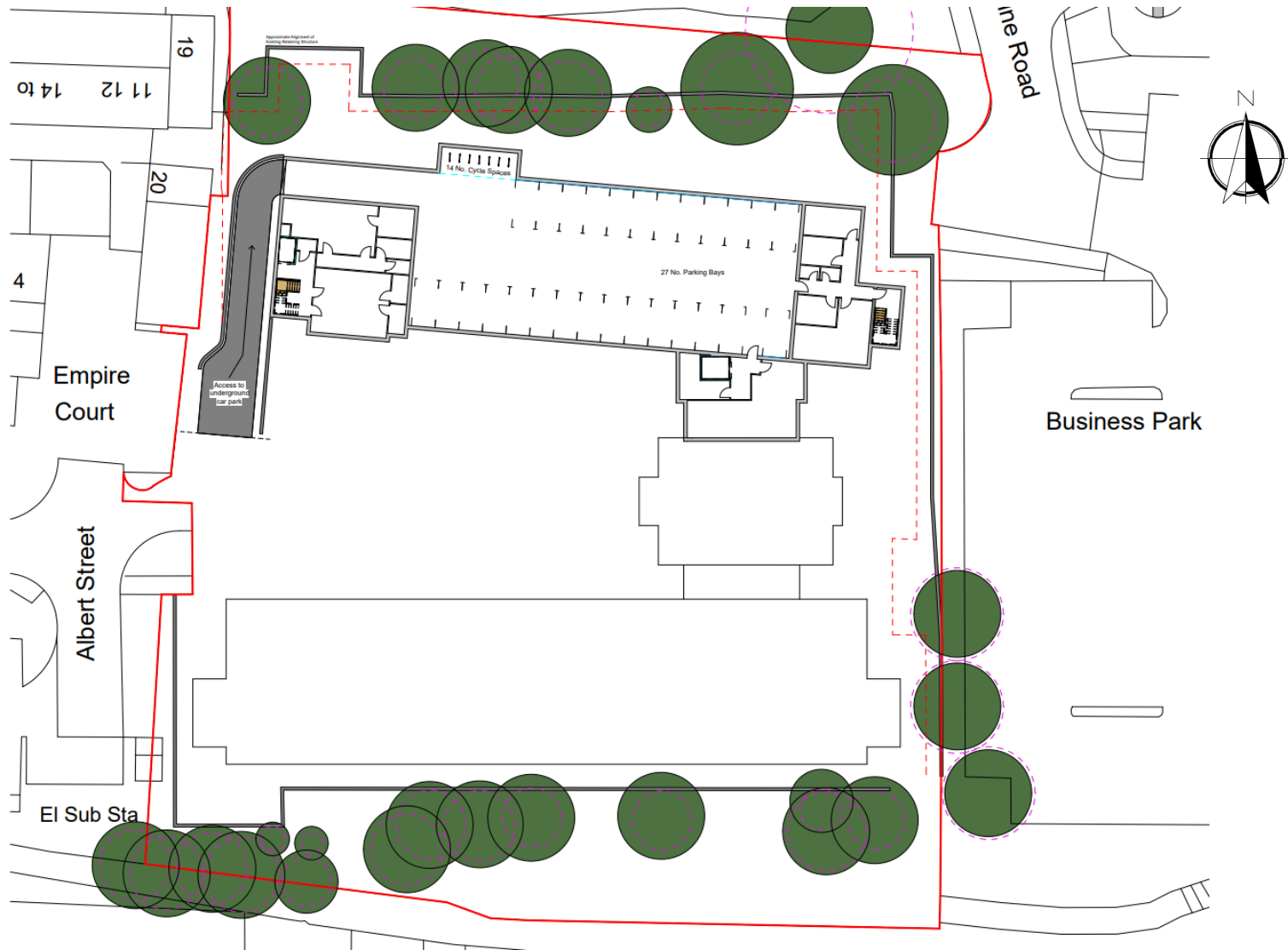
Site Location



Local Plan designation



Basement car park

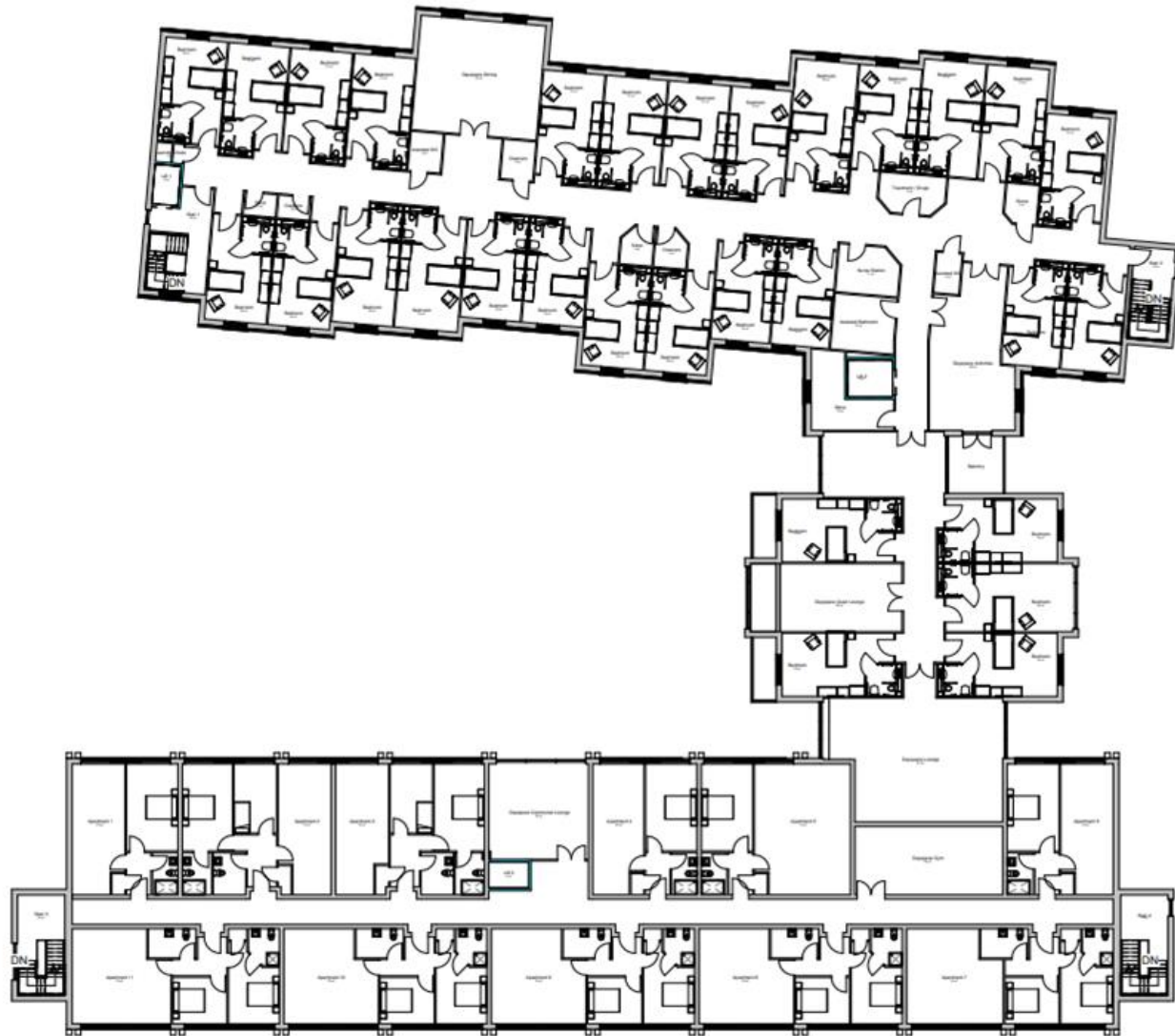


Proposed site plan – ground floor

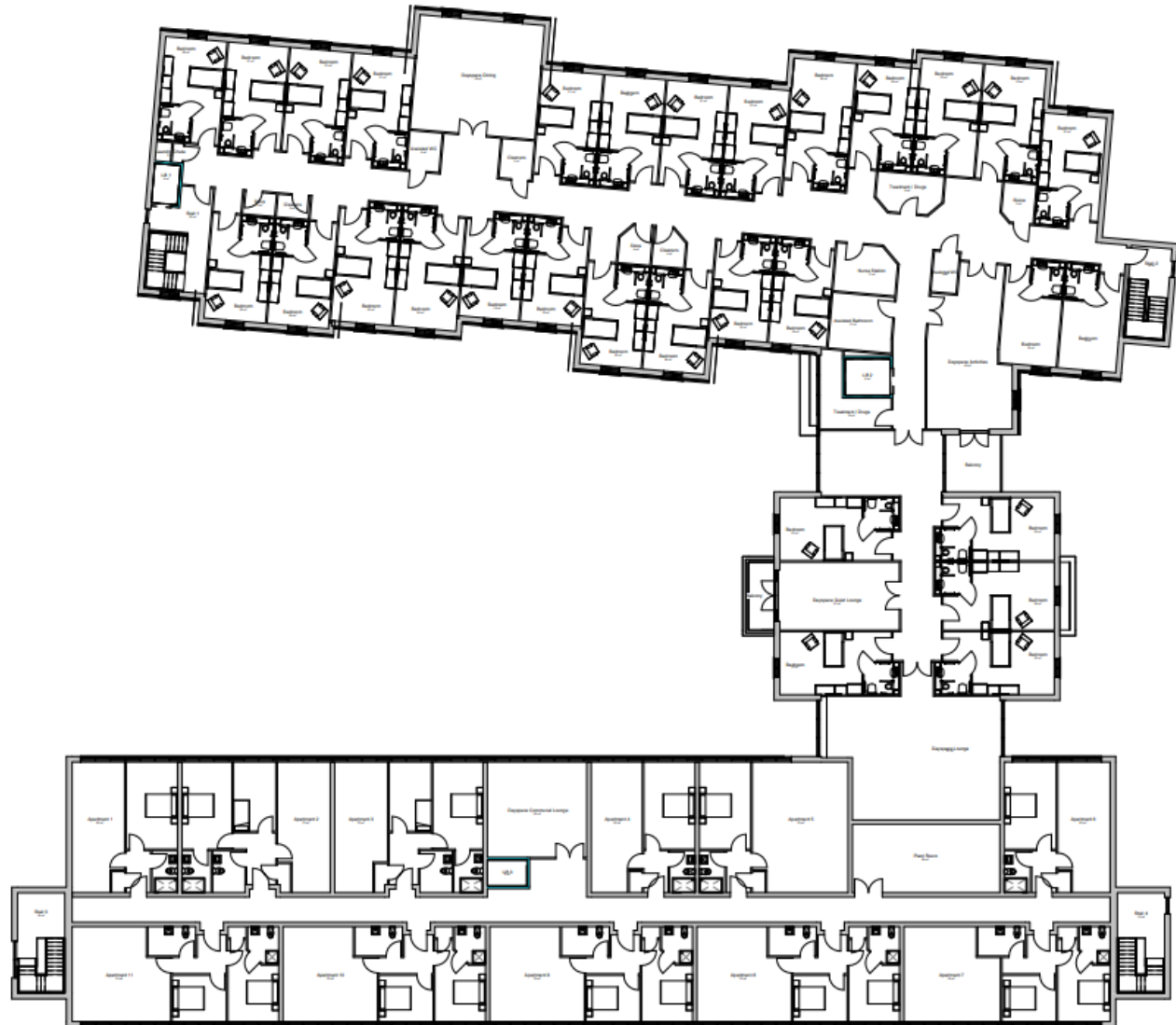


The floor plan illustrates the layout of the 1st floor, featuring a central corridor and numerous rooms. Key areas include a large library at the top, a central office area, and a lower section with classrooms and offices. The plan is divided into two main sections by a red dashed line. The top section contains a large library, a central office area, and a lower section with classrooms and offices. The bottom section contains a large library, a central office area, and a lower section with classrooms and offices. The plan is labeled with 'Page 1' in the top left and 'Page 2' in the bottom right.

Proposed first floor plan



Proposed second floor plan



Proposed courtyard elevations



① Proposed North Courtyard Elevation
1 : 100



② Proposed South Courtyard Elevation

Proposed west and north elevations



① West
1:100



Proposed east and south elevations



① East
1:100



② South
1:100

Views looking eastwards



Inside site looking west



Further views from inside the site



View looking south-east towards Osprey House from north-western corner of Site.



View looking north-east across the Site from south-western corner.



View looking north-west across the Site from south-eastern corner.



View looking west across the Site from eastern boundary.