



people spaces places

Redditch Play Assessment

for Redditch Borough Council

20-06-23 RevA



Table of Contents



people spaces places

- Introduction
 - ↳ Methodology
- Developing the Accessibility Model
- Analysis
 - ↳ Accessibility & IMD
 - ↳ Accessibility & Health Deprivation
 - ↳ Accessibility & Population aged 12 & Under
 - ↳ Accessibility & Population of Overweight 4-5 year olds
 - ↳ Accessibility & Population of Overweight 10-11 year olds
 - ↳ Play Condition Rating
 - ↳ Retained vs Lost Provision
 - ↳ Residents Perception of Quantity

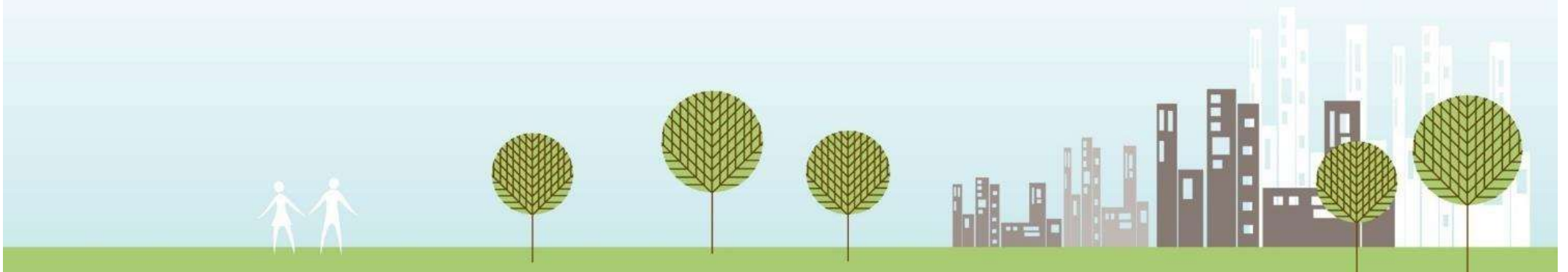


Table of Contents



people spaces places

- Opportunities to Address Deficiencies
 - ↳ Enhancing from Local to Neighbourhood Provision
 - ↳ Sites Allocated for Housing Developments
- Summary
- Appendix
 - ↳ Case Study: Abbeydale Park



Introduction

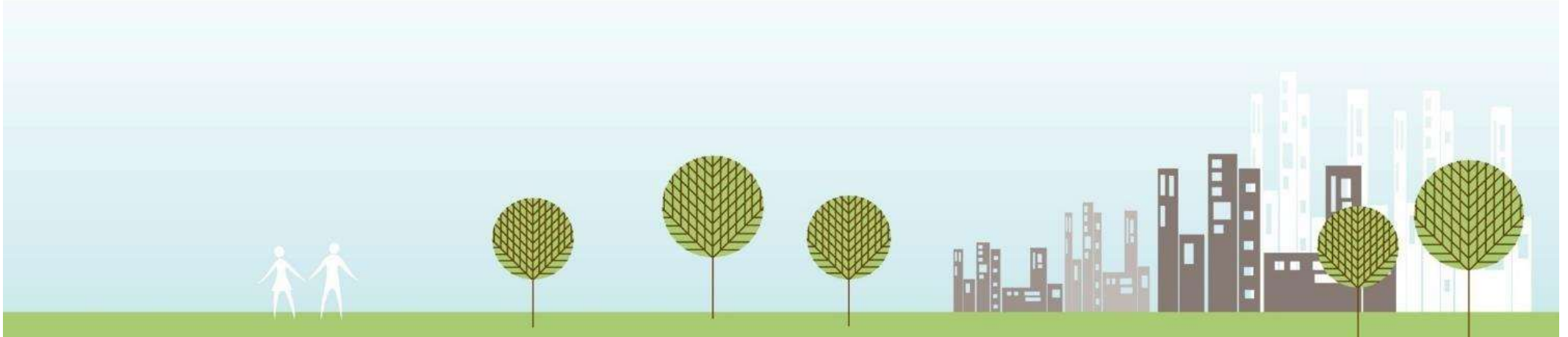


people spaces places

CFP was commissioned to carry out an assessment of the accessibility of equipped children's play provision in Redditch Borough.

This was based on earlier work as part of the Leisure and Culture Strategy and Open Space Study.

The scope of the study includes equipped children's play for infants, juniors and teenagers and to look at rationalisation and potential removal of play spaces where appropriate.



Methodology



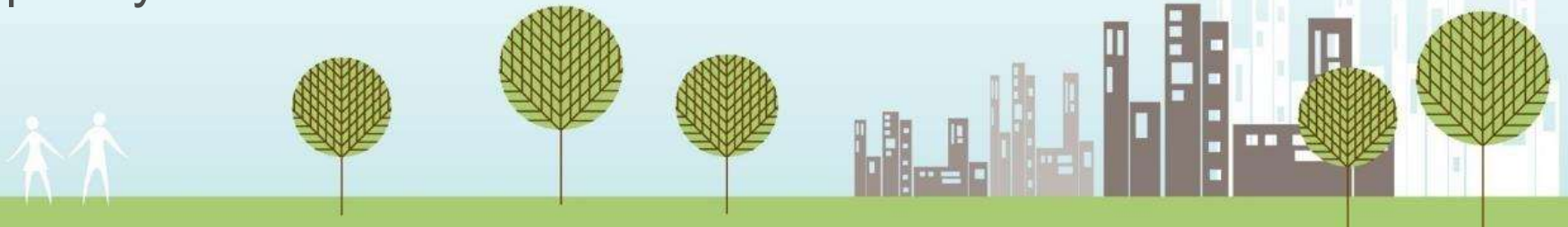
people spaces places

The first step was establishing a full GIS dataset of Redditch Borough play sites based on updating the work carried out as part of the Leisure and Culture Strategy.

Play spaces have been plotted as polygons in GIS. Each polygon reflects a play site & has been cross referenced with RBC management and maintenance data. Parish Council provision is included.

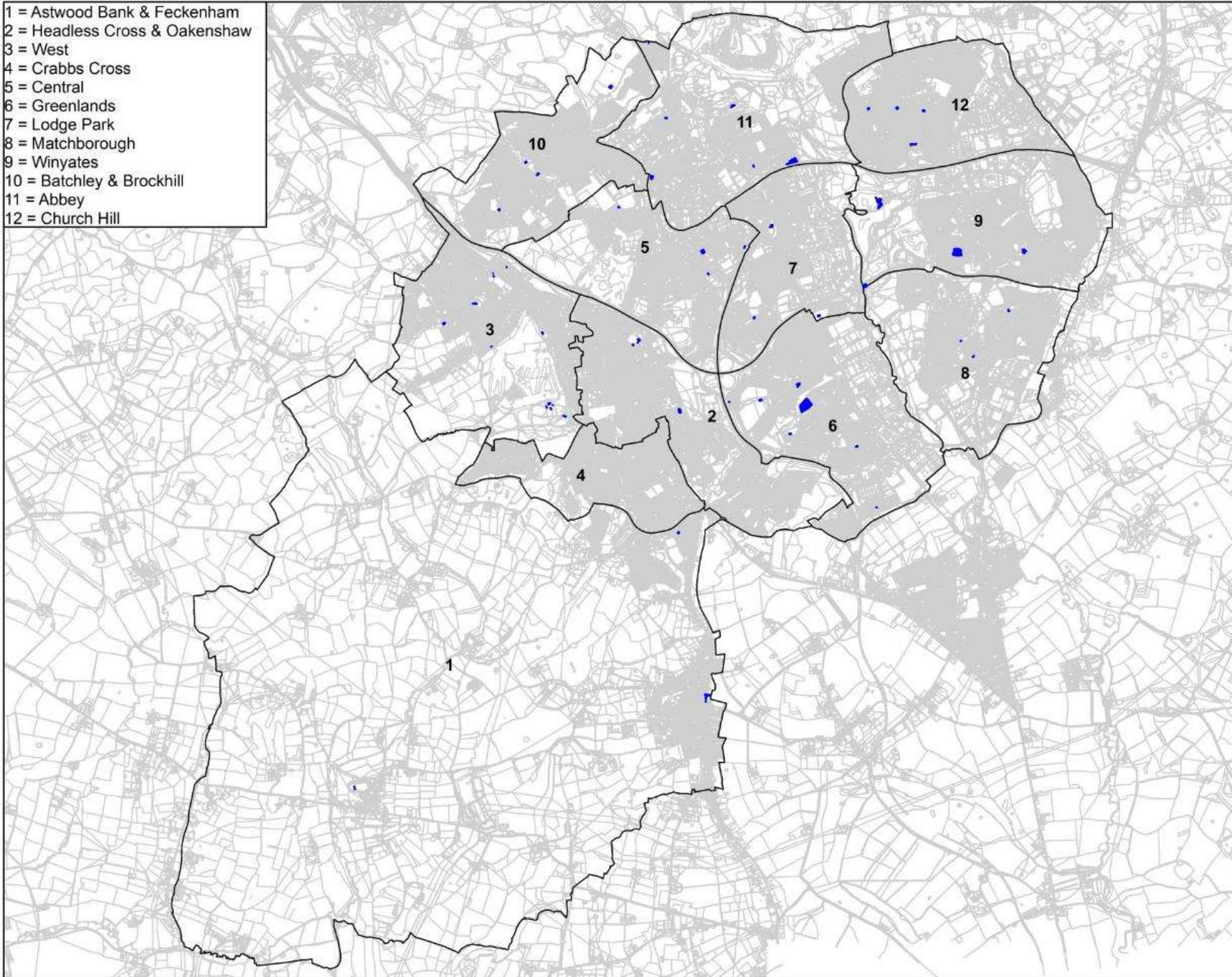
Only publicly accessible play spaces are included.

Open spaces which previously had play provision, & where this has subsequently been removed are excluded.



All Play Provision




- 1 = Astwood Bank & Feckenham
- 2 = Headless Cross & Oakenshaw
- 3 = West
- 4 = Crabbs Cross
- 5 = Central
- 6 = Greenlands
- 7 = Lodge Park
- 8 = Matchborough
- 9 = Winyates
- 10 = Batchley & Brockhill
- 11 = Abbey
- 12 = Church Hill



Redditch and Bromsgrove Play

Figure 1
All Play Provision in Redditch

Legend

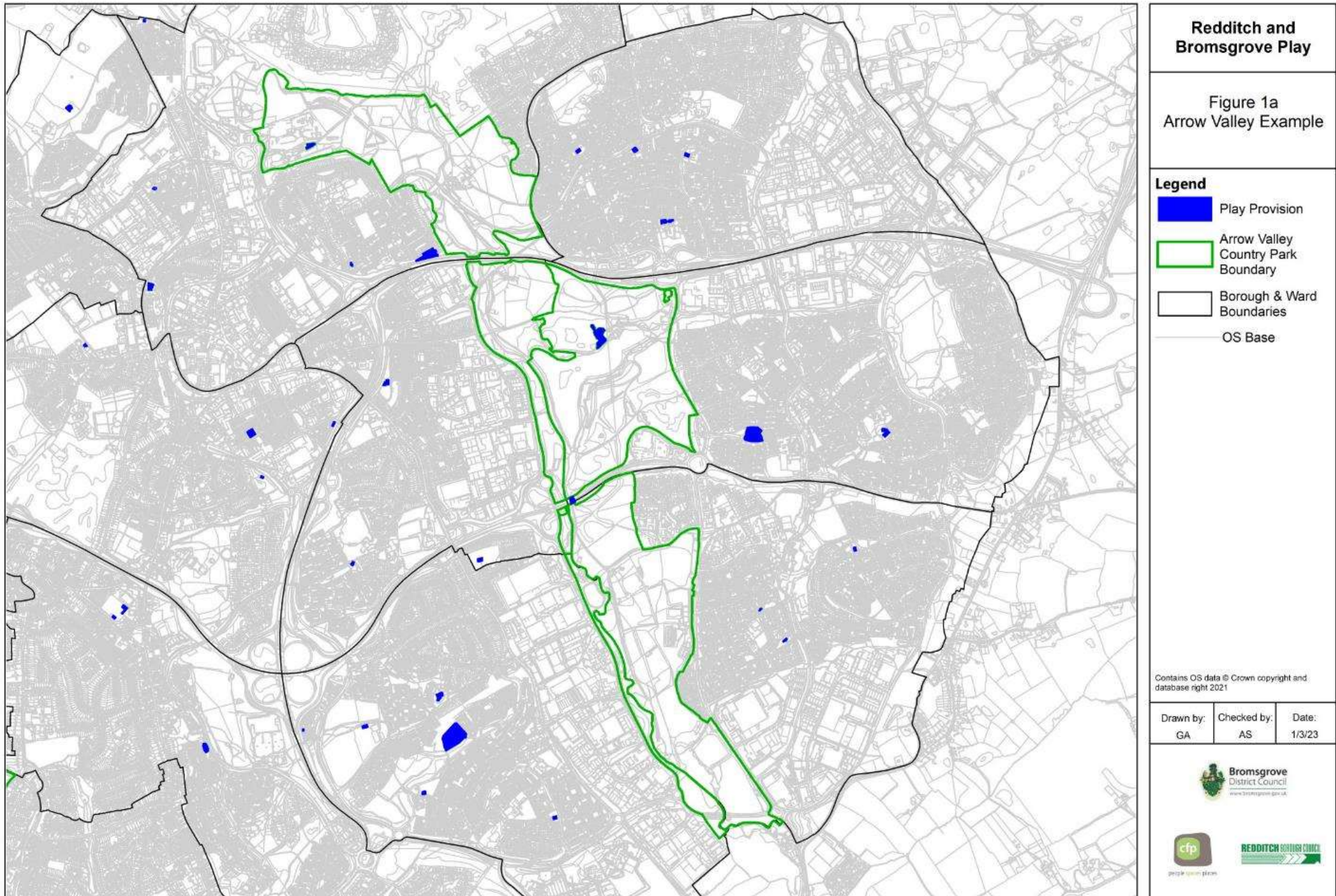
-  All Play Provision
-  Borough & Ward Boundaries
-  OS Base

Contains OS data © Crown copyright and database right 2021.

Drawn by:	Checked by:	Date:
GA	AS	1/3/23



Arrow Valley Country Park Play Provision

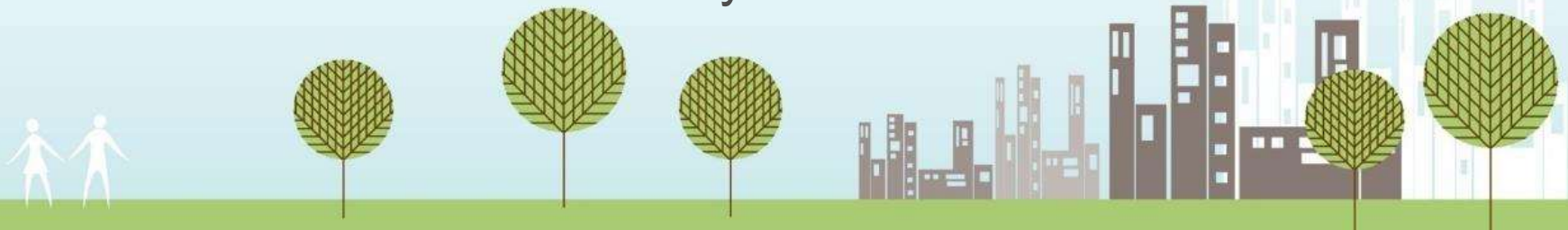


Residential Mapping



people spaces places

- Accessibility mapping is focused on access by residential properties across Redditch (excluding industrial, commercial & other uses)
- The data was extracted as residential point data from BLPU Classification dataset.
- The data has been used to better understand how many residential properties have access to play provision
- Accessibility has been cross referenced with demographic health data including: IMD; Health Deprivation & Disability; Population aged 12 & Under and Child Obesity.



All Play Provision by Ward

Ward	Play Site ID	Play Site Name	Provision	Hierarchy
1 Astwood Bank & Feckenham	184	Banners Lane	Toddler and Junior	Local
	192	Astwood Bank Park Play Area	Toddler, Junior, Teenager, Adult Fitness	Neighbourhood
	193	Feckenham Playing Fields	Toddler and Junior	Neighbourhood
2 Headless Cross & Oakenshaw	173	High Trees	Junior and Teenager	Local
	189	Birchfield Road Playing Fields Ball Court	Junior and Teenager	Local
	359	Birchfield Road Playing Field Play Area	Toddler and Junior	Neighbourhood
3 West	178	Morton Stanley - Play	Toddler and Junior	Neighbourhood
	179	Yeadon Close	Toddler	Local
	180	Springvale Road	Toddler and Junior	Neighbourhood
	181	Birchfield Road ~ Rear of 417	Toddler and Junior	Local
	187	Morton Stanley - Skate and Risky Play	Junior	Neighbourhood
	188	Carlton Close	Toddler and Junior	Local
	203	Morville Street**	Toddler and Junior	Local
	350	Fleetwood Close**	Toddler and Junior	Local
4 Crabbs Cross	-	-	-	-

** Sites not managed or maintained by RBC

All Play Provision by Ward

Ward	Play Site ID	Play Site Name	Provision	Hierarchy	
5	Central	167	Terrys Playing Fields	Toddler and Junior	Local
		168	Mayfields Park	Toddler and Junior	Neighbourhood
		185	Glover Street	Toddler, Junior, Teenager	Neighbourhood
		198	Britannia Close	Toddler	Local
6	Greenlands	171	Bengrove	Toddler and Junior	Neighbourhood
		172	Hedgerows	Toddler	Local
		190	Tredington Close	Junior and Teenager	Local
		191	Throckmorton	Junior and Teenager	Local
		202	Whetstone Close**	Toddler	Local
		357	Dingleside Field	Junior	Local
		358	Greenlands Playing Field	Teenager and Adult Fitness	Local
7	Lodge Park	175	Ravensmere Field	Toddler and Junior	Local
		176	Lodge Pool Drive	Toddler and Junior	Local
		177	Sandon Close	Toddler, Junior, Teenager	Neighbourhood
8	Matchborough	199	Mil hill	Junior and Teenager	Local
		200	Eathorpe Close	Junior and Teenager	Local
		201	Matchborough Rocks	Junior and Teenager	Local

** Sites not managed or maintained by RBC

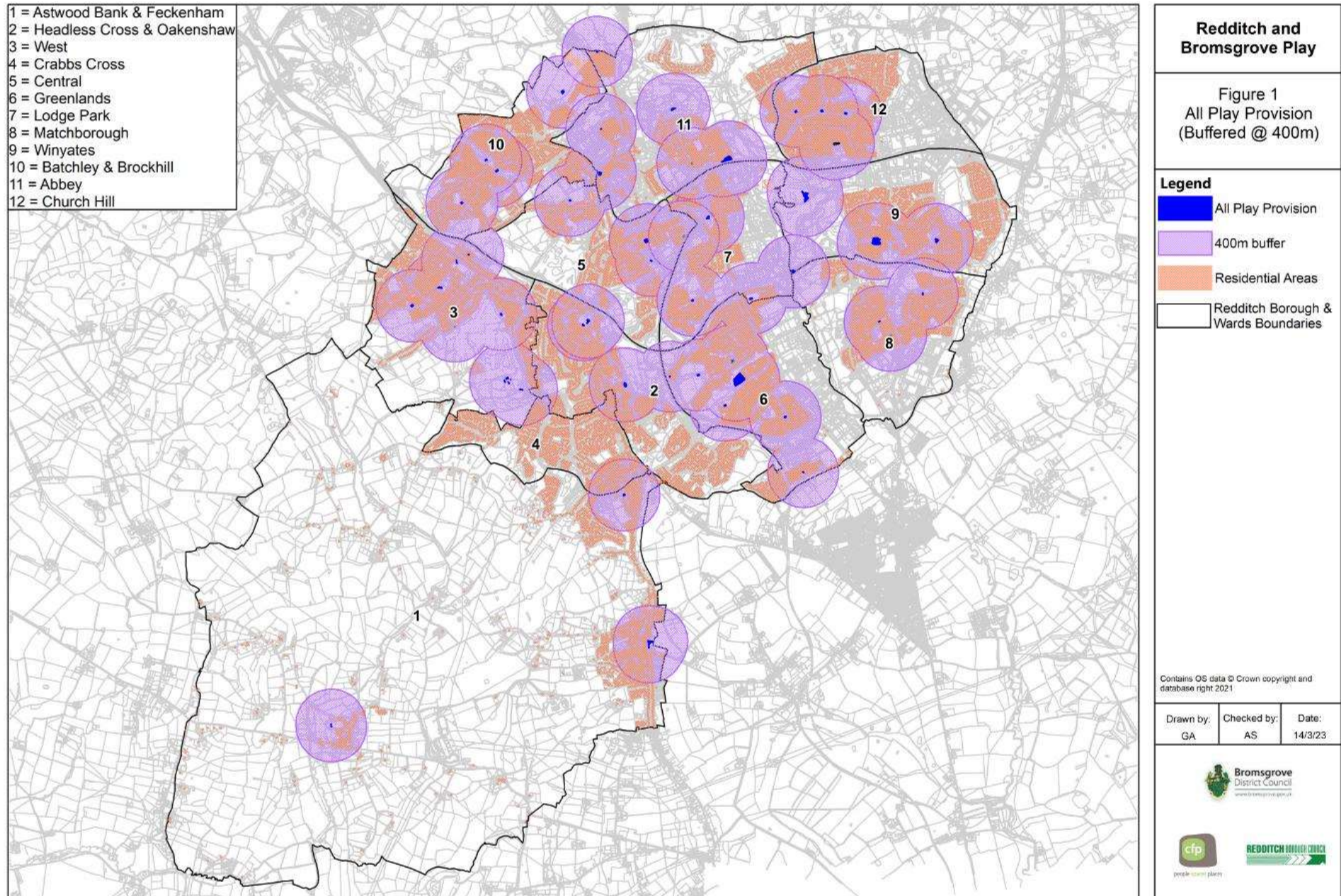
All Play Provision by Ward

Ward	Play Site ID	Play Site Name	Provision	Hierarchy	
9	Winyates	182	Lowlands Lane	Toddler, Junior, Teenager	Neighbourhood
		183	Cardington Close	Toddler, Junior, Teenager	Neighbourhood
		196	Arrow Valley Countryside Centre	Toddler, Junior and Adult Fitness	Neighbourhood
		356	Arrow Valley Park - Ball Court	Junior and Teenager	Local
10	Batchley & Brockhill	164	Brockhill Park	Junior and Teenager	Local
		165	Batchley Gardens Play Area	Toddler and Junior	Neighbourhood
		166	Rowan Crescent	Toddler and Junior	Local
		204	Brockhill East**	Toddler and Junior	Neighbourhood
11	Abbey	161	Dolphin Road	Toddler and Junior	Local
		162	Dale Road	Toddler	Local
		163	Kings Oak	Toddler, Junior, Teenager	Local
		206	Weights Lane**	Unknown	Local
		194	Forge Mill Play Area**	Toddler and Junior	Neighbourhood
		360	Dixon Close	Toddler	Local
12	Church Hill	169	Northleach Close	Toddler and Junior	Local
		170	Heronfield Close	Junior and Teenager	Local
		186	Willow Trees Community Centre**	Toddler and Junior	Neighbourhood
		354	Cleeve Close	Unknown	Local

** Sites not managed or maintained by RBC

All Play Buffered at 400m

29.8% of households don't have access within 400m



Analysis – All Play Provision



people spaces places

Households without play provision within 400m by ward.

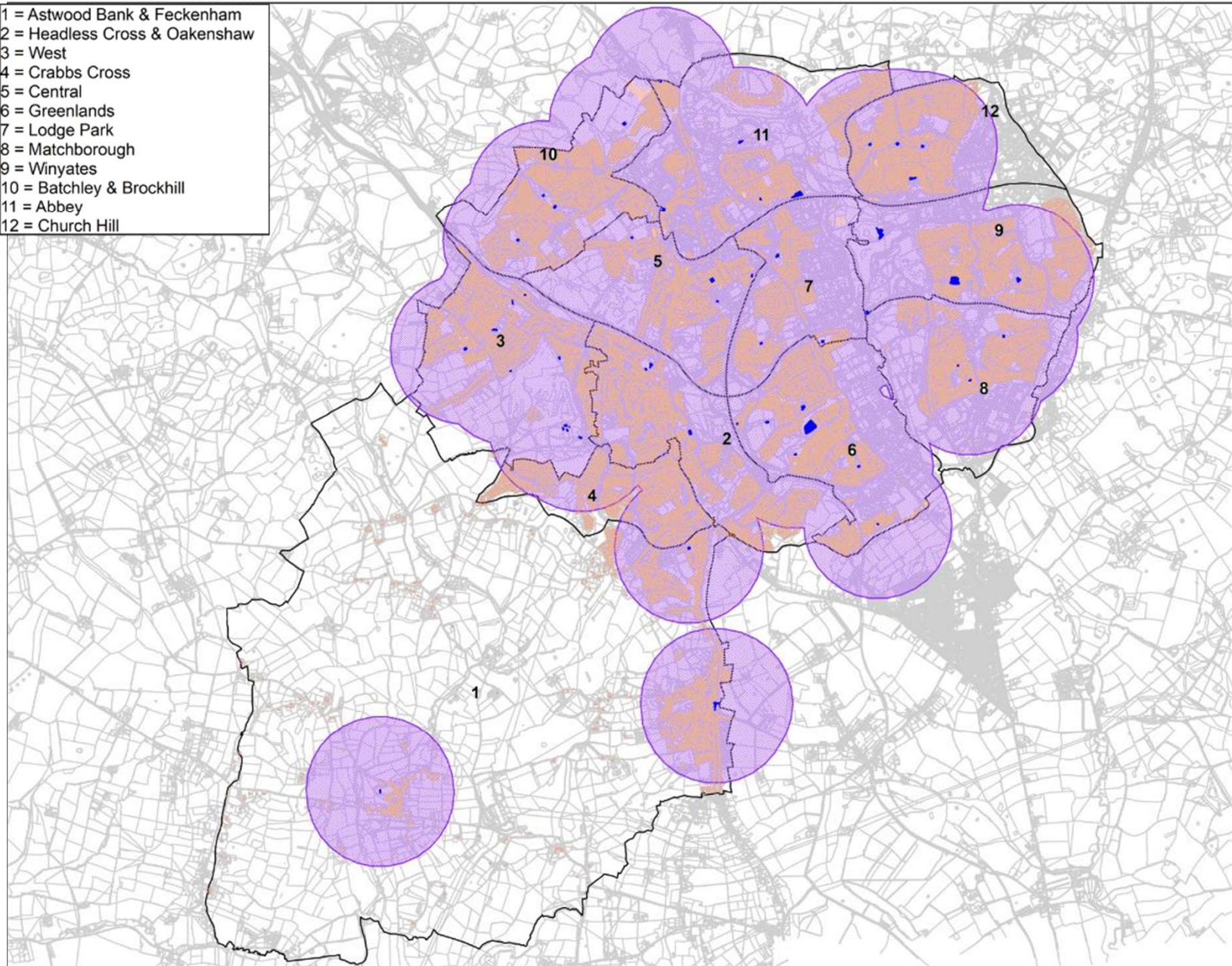
Ward	No	%
Crabbs Cross Ward	1924	76.1%
Headless Cross and Oakenshaw Ward	2058	51.6%
Astwood Bank and Feckenham Ward	1320	47.5%
Winyates Ward	1525	37.4%
Central Ward	1002	32.1%
Abbey Ward	861	26.9%
Batchley & Brockhill Ward	1076	24.6%
West Ward	489	17.9%
Matchborough Ward	551	17.7%
Church Hill Ward	756	17.6%
Lodge Park Ward	315	11.9%
Greenlands Ward	191	3.9%



All Play Buffered at 800m

2.5% of households don't have access within 800m

- 1 = Astwood Bank & Feckenham
- 2 = Headless Cross & Oakenshaw
- 3 = West
- 4 = Crabbs Cross
- 5 = Central
- 6 = Greenlands
- 7 = Lodge Park
- 8 = Matchborough
- 9 = Winyates
- 10 = Batchley & Brockhill
- 11 = Abbey
- 12 = Church Hill



Redditch and Bromsgrove Play

Figure 1b
All Play Provision
(Buffered @ 800m)

Legend

-  All Play Provision
-  800m buffer
-  Residential Areas
-  Redditch Borough & Ward Boundaries
-  OS Base

Contains OS data © Crown copyright and database right 2021

Drawn by:	Checked by:	Date:
GA	AS	23/02/23



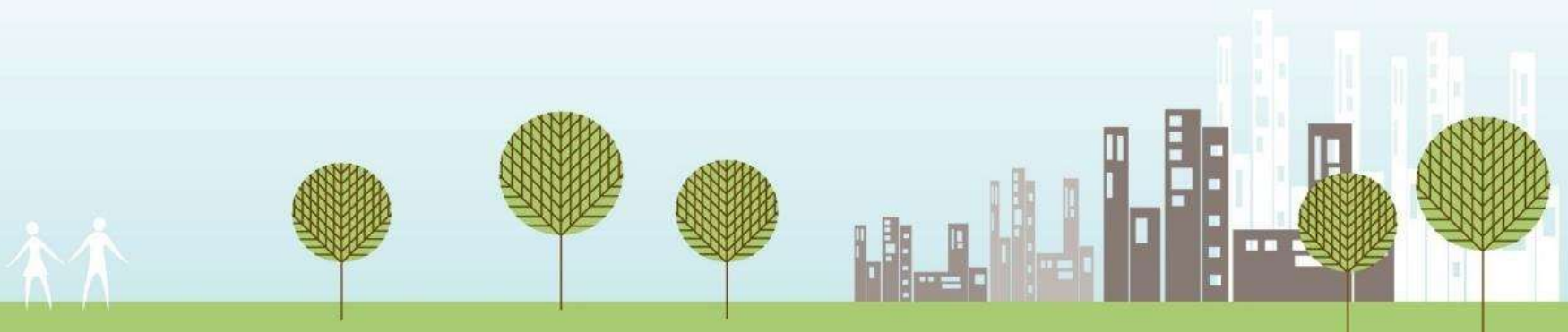
Analysis – All Play Provision



people spaces places

Households without play provision within 800m by ward.

Ward	No	%
Astwood Bank and Feckenham Ward	394	14.2%
Crabbs Cross Ward	304	12.0%
Winyates Ward	206	5.1%
Headless Cross and Oakenshaw Ward	108	2.7%
Church Hill Ward	17	0.4%
Abbey Ward	9	0.3%
Matchborough Ward	2	0.1%
Central Ward	0	0.0%
Batchley & Brockhill Ward	0	0.0%
West Ward	0	0.0%
Lodge Park Ward	0	0.0%
Greenlands Ward	0	0.0%



Hierarchy



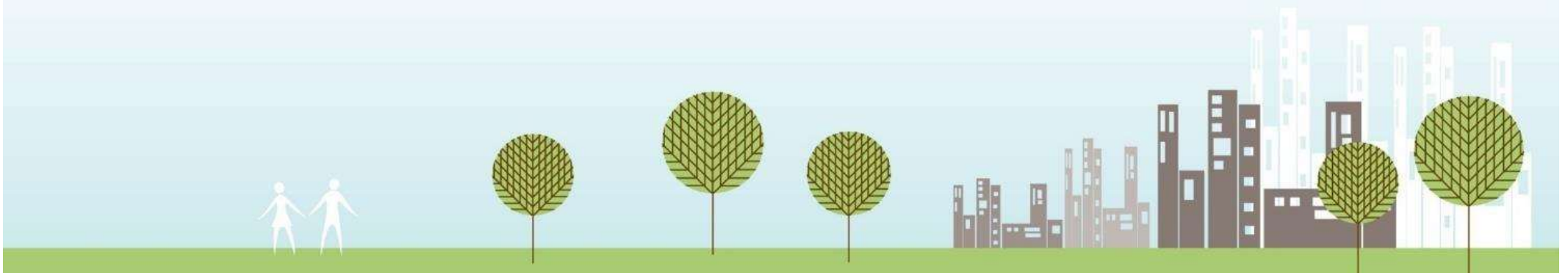
people spaces places

RBC uses a 'P' rating as a way of categorising play facilities based on size, use and type. This is used to determine inspection frequency.

Each site has been assigned a play hierarchy based on their 'p rating'.

- P3/P4 – Smaller sites and standalone ballcourts - Local
- P1/P2 – 'Main' / larger sites – Neighbourhood

This has then been reviewed and updated on a site by site basis to create a play hierarchy and access model



Hierarchy



people spaces places

- The play hierarchy has been reviewed against the Fields in Trust guidelines for outdoor space.
- 400m = 5-minute walk (Local)
- 800m = 10-minute walk (Neighbourhood)
- Locally Equipped Area for Play (LEAP) aimed at children who can go out to play independently should be within 400m.
- Neighbourhood Equipped Area for Play (NEAP) aimed at older children should be within 1000m



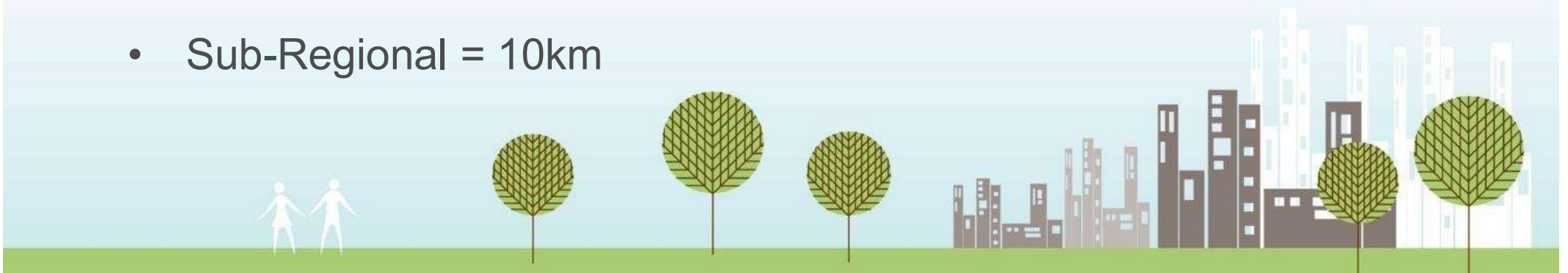
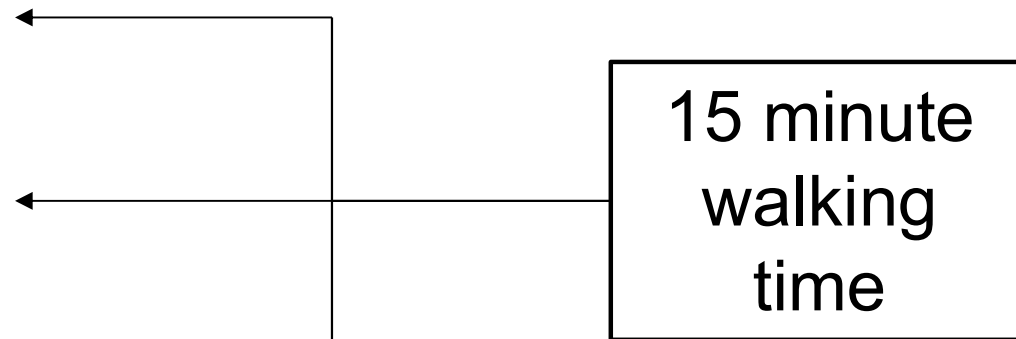
GI Standards



people spaces places

National Access to Natural Greenspace Standard

- Doorstep = 200m
- Local = 300m
- Neighbourhood = 1km
- District = 5km
- Sub-Regional = 10km



Redditch Accessibility Model

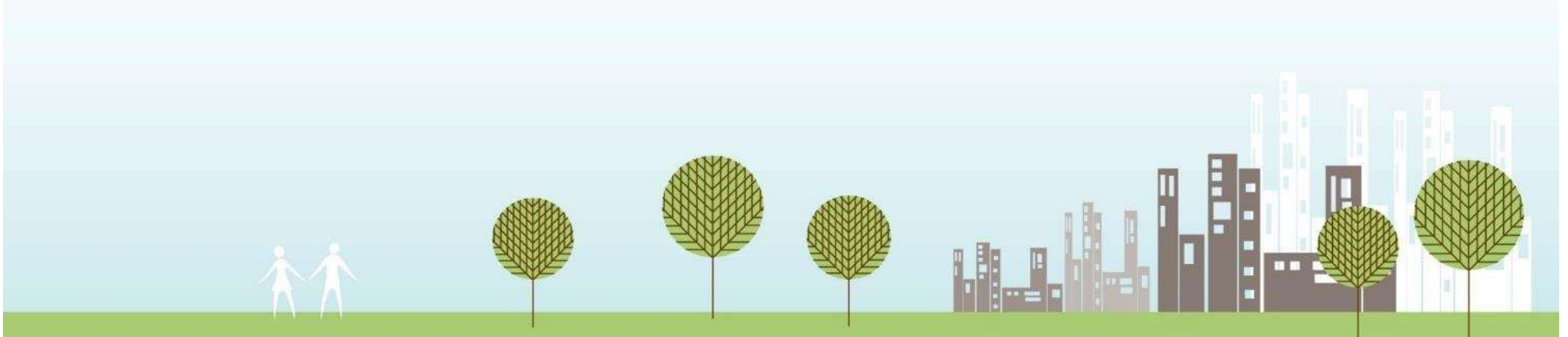


people spaces places

In the assessment that follows we have used an accessibility model for Redditch that is broadly comparable with national guidelines:

- Local Play Spaces – 400m (5 mins walking time)
- Neighbourhood Play Spaces – 800m (10 mins walking time)

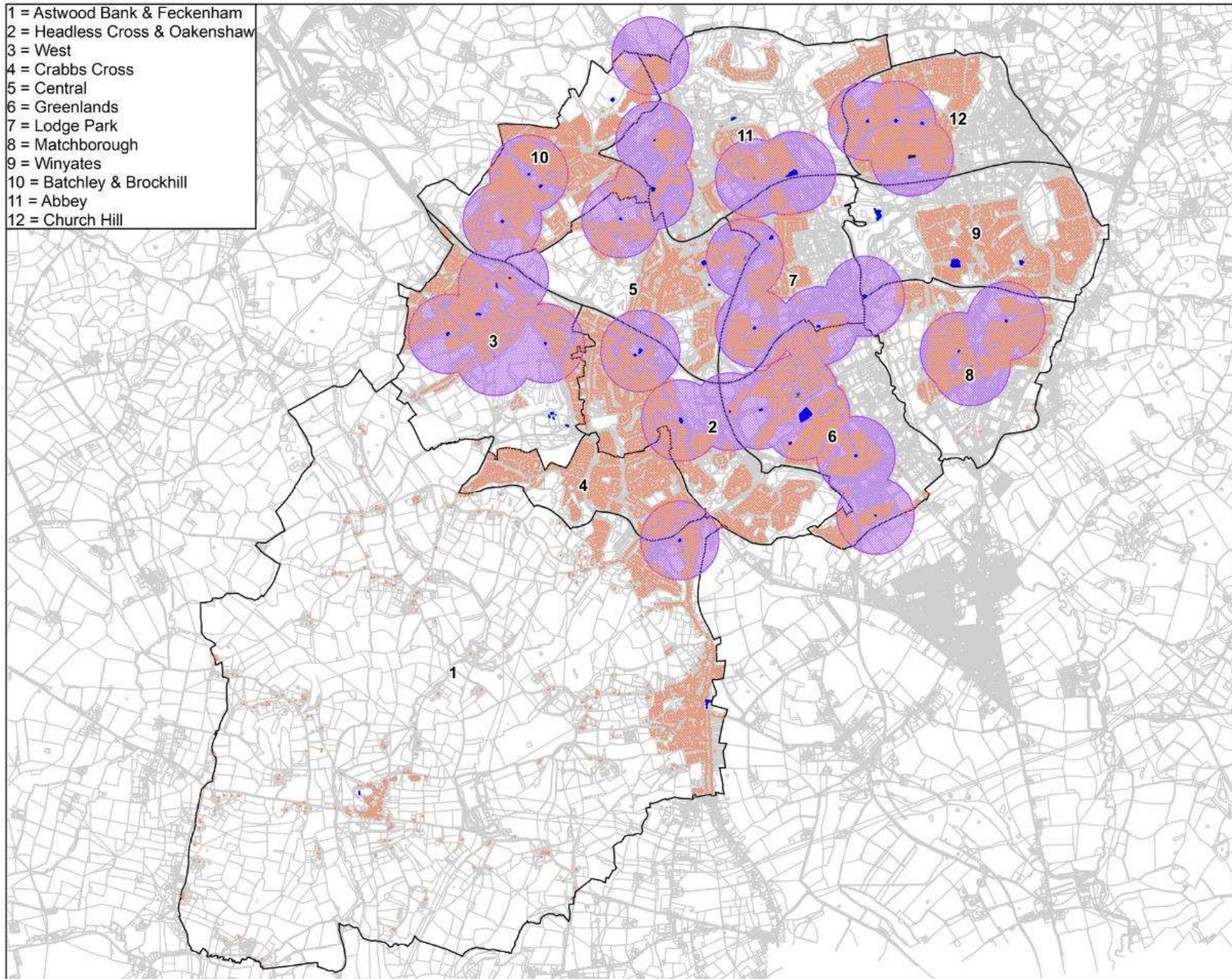
This has been applied to the subsequent accessibility analysis



Local Play Buffered at 400m

45.5% of households don't have access to local play provision within 400m

- 1 = Astwood Bank & Feckenham
- 2 = Headless Cross & Oakenshaw
- 3 = West
- 4 = Crabbs Cross
- 5 = Central
- 6 = Greenlands
- 7 = Lodge Park
- 8 = Matchborough
- 9 = Winyates
- 10 = Batchley & Brockhill
- 11 = Abbey
- 12 = Church Hill



Redditch and Bromsgrove Play

Figure 2a
Local Play Provision
(Buffered @ 400m)

Legend

-  Play Provision
-  400m buffer
-  Residential Areas
-  Redditch Borough & Wards Boundaries
-  OS Base

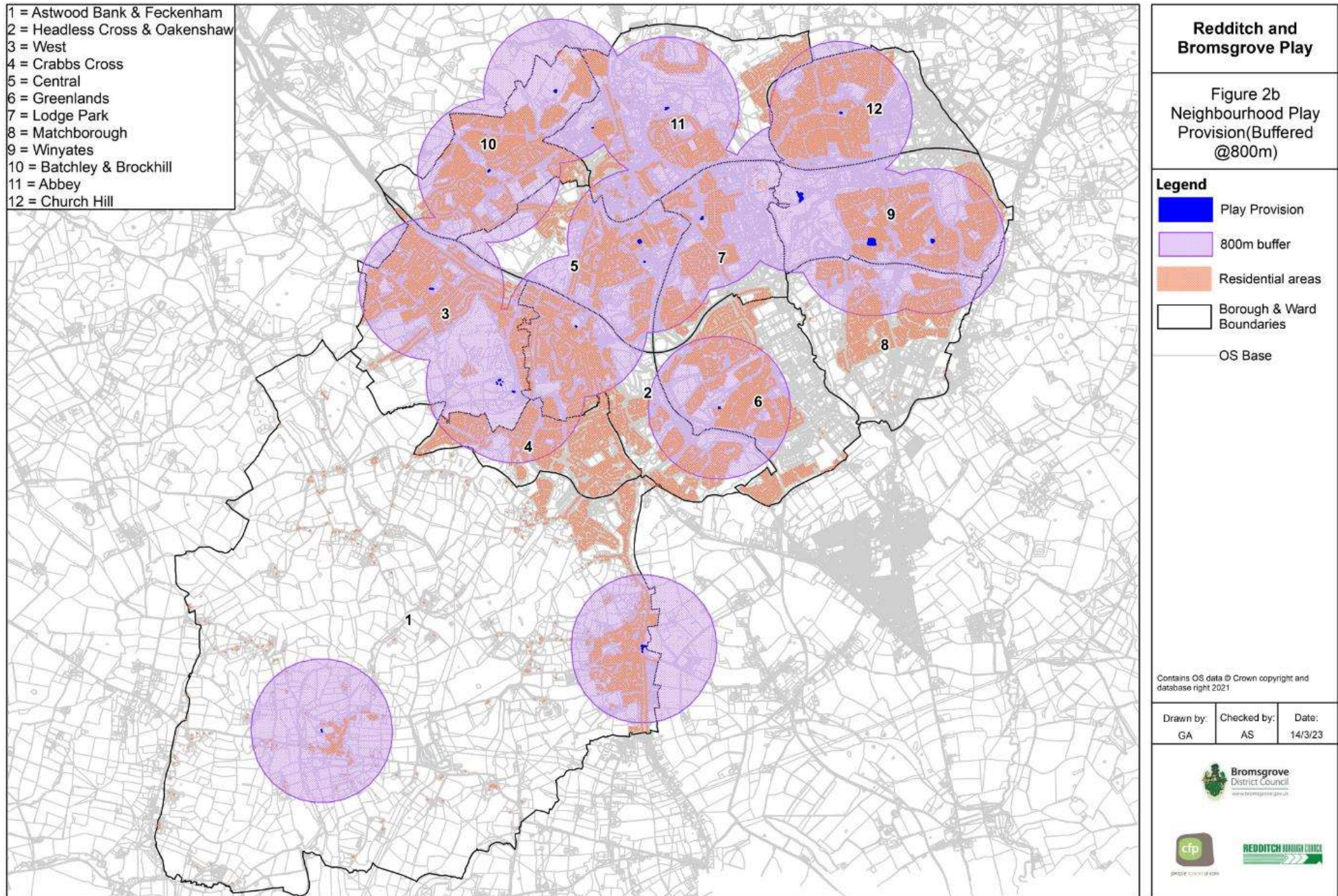
Contains OS data © Crown copyright and database right 2021

Drawn by:	Checked by:	Date:
GA	AS	14/3/23



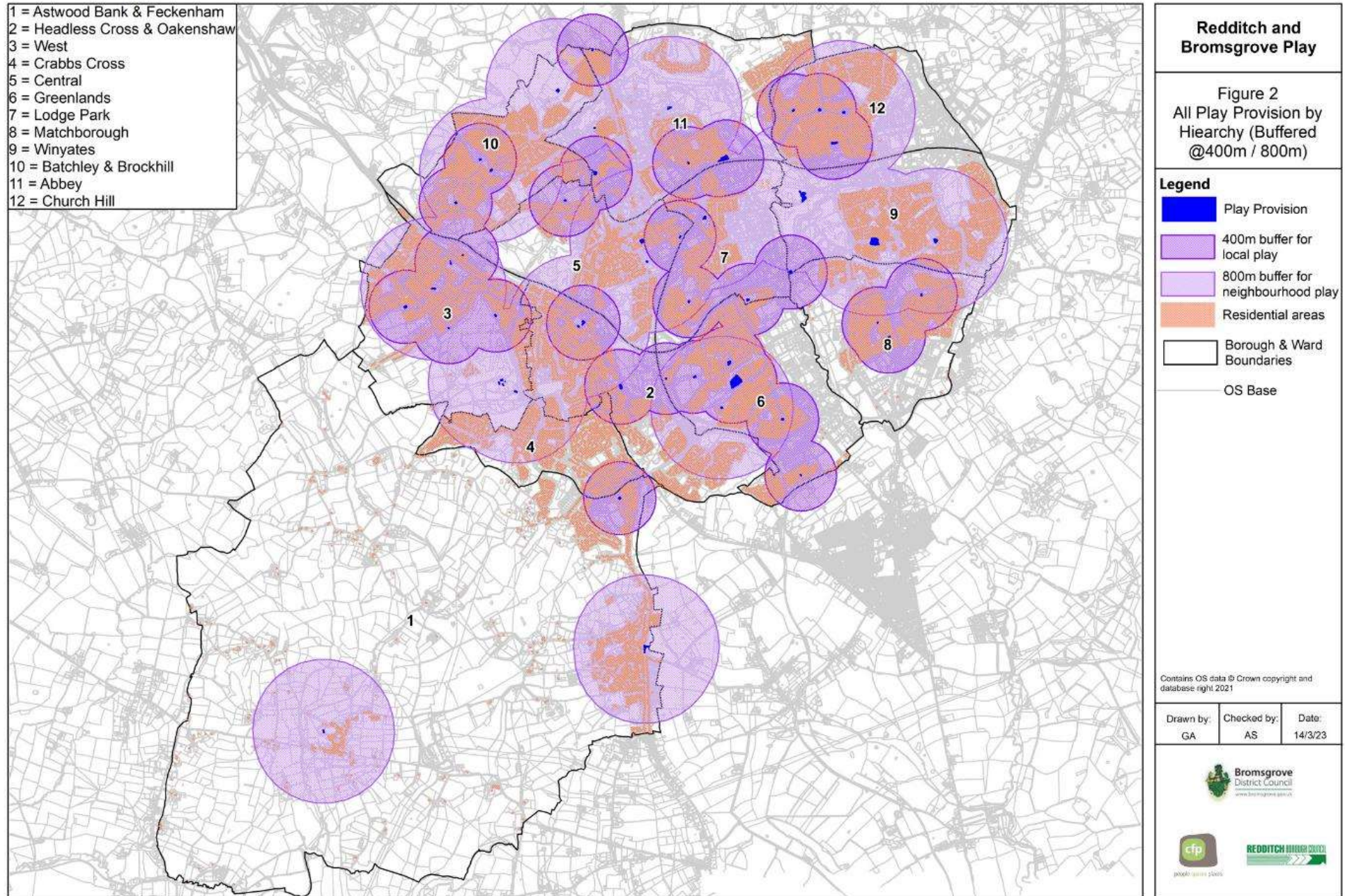
Neighbourhood Play Buffered at 800m

20.9% of households don't have access to neighbourhood play provision within 800m.



Accessibility Model

Just 8.4% of households don't have access play provision using the access model.



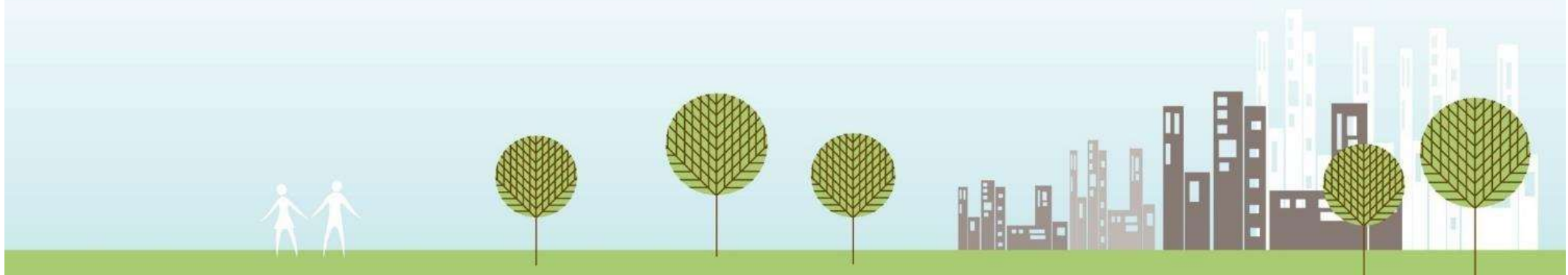
Accessibility Model Analysis



people spaces places

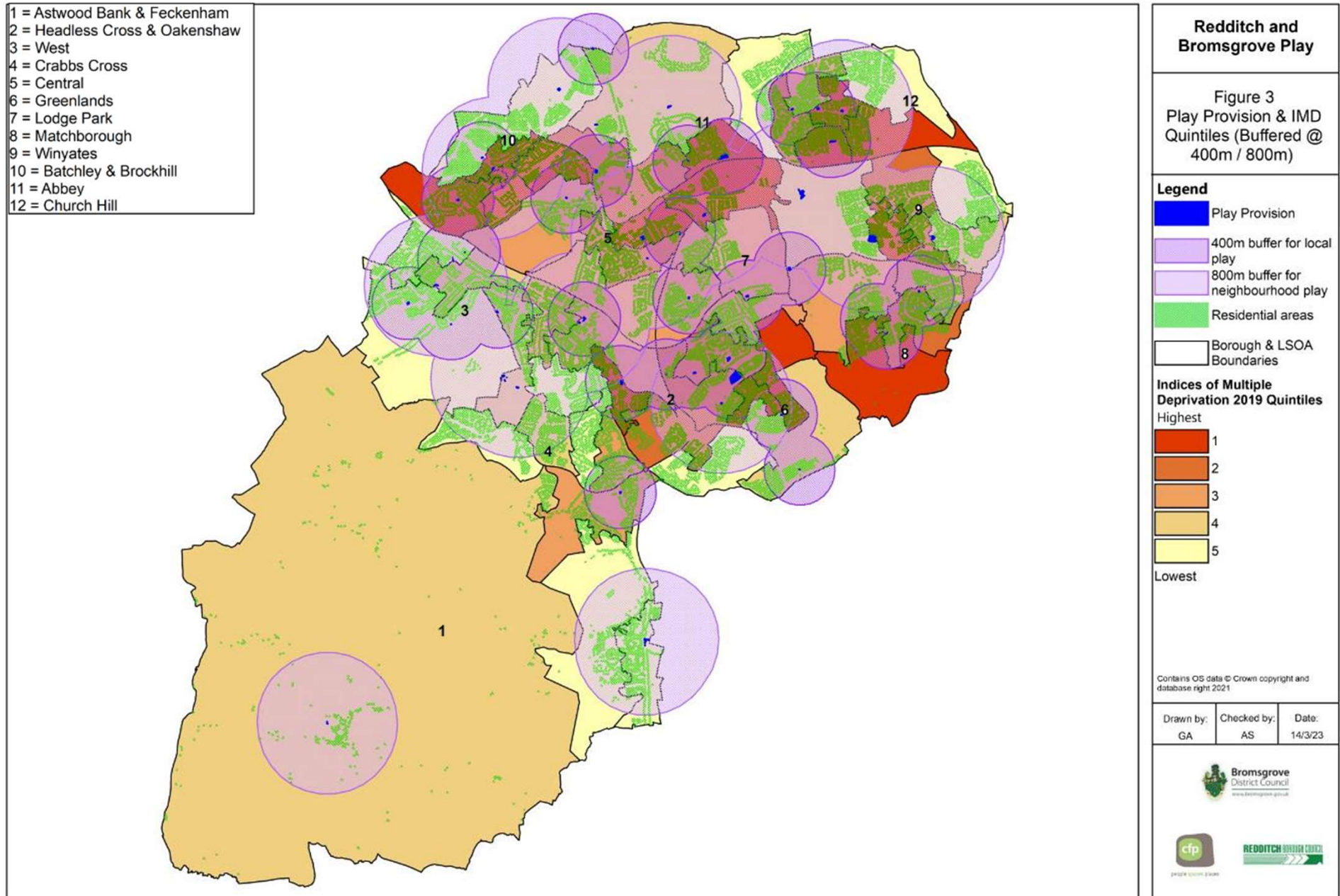
Households without access to play provision within using access model by ward:

Wards	No	%
Crabbs Cross Ward	1064	42.1%
Astwood Bank and Feckenham Ward	769	27.7%
Headless Cross and Oakenshaw Ward	548	13.7%
Abbey Ward	321	10.0%
Matchborough Ward	310	10.0%
Winyates Ward	206	5.1%
Greenlands Ward	168	3.5%
West Ward	80	2.9%
Central Ward	36	1.2%
Church Hill Ward	17	0.4%
Batchley & Brockhill Ward	1	0.0%
Lodge Park Ward	0	0.0%



Accessibility Model & IMD

1.4% of households in the top 20% most deprived don't have access.



Analysis



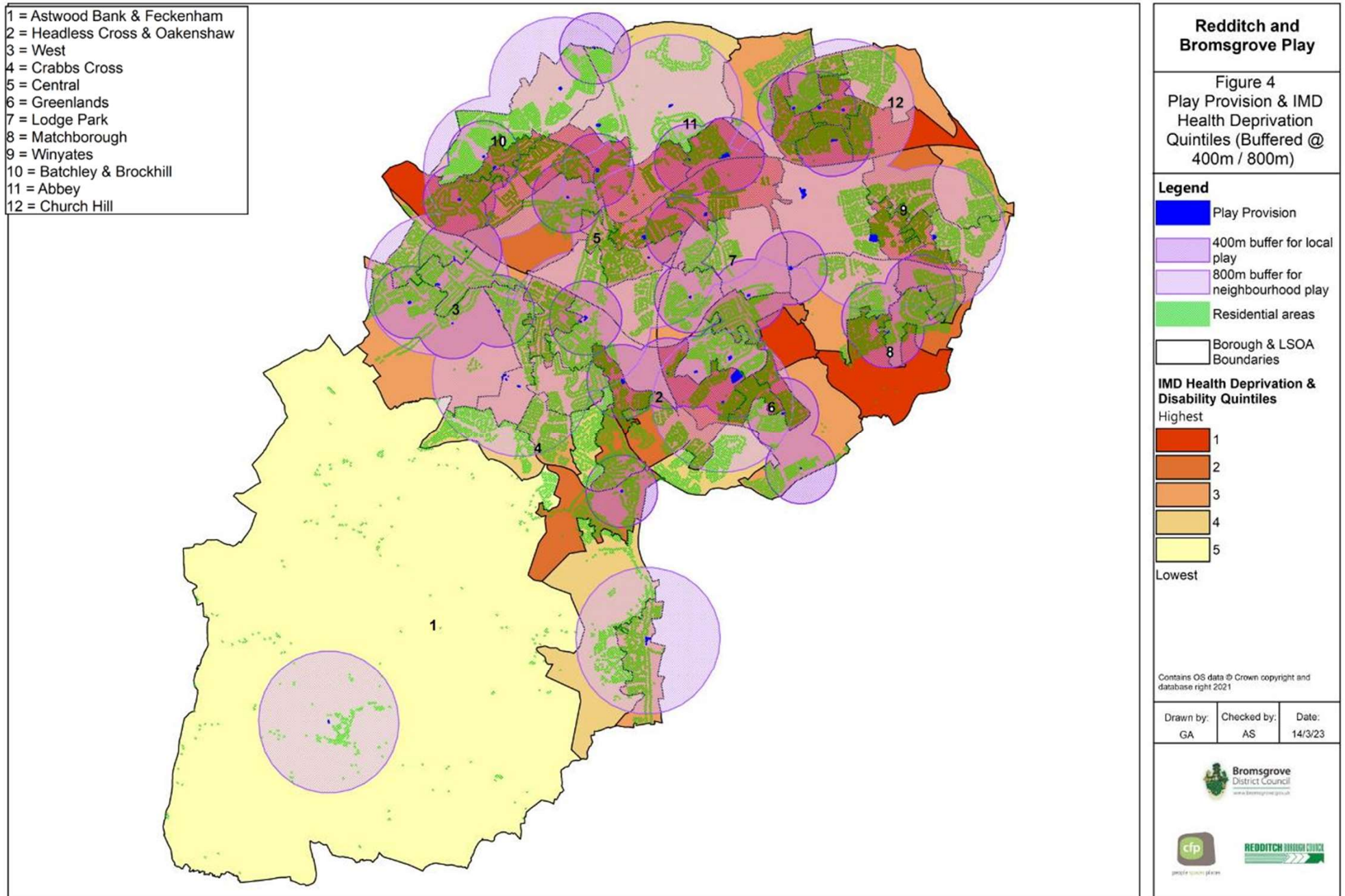
people spaces places

Households in top 20% most deprived without access to play provision using access model by ward:

Wards	No	%
Matchborough Ward	74	7.9%
Headless Cross and Oakenshaw Ward	58	7.6%
Greenlands Ward	23	1.4%
Batchley & Brockhill Ward	1	0.0%
Winyates Ward	0	0.0%
Central Ward	0	0.0%
Lodge Park Ward	0	0.0%
Church Hill Ward	0	0.0%
Abbey Ward	0	0.0%
Astwood Bank and Feckenham Ward		
Crabbs Cross Ward		
West Ward		

Accessibility Model & Health Deprivation

1.1% of households in the top 20% most health deprived don't have access.



Analysis



people spaces places

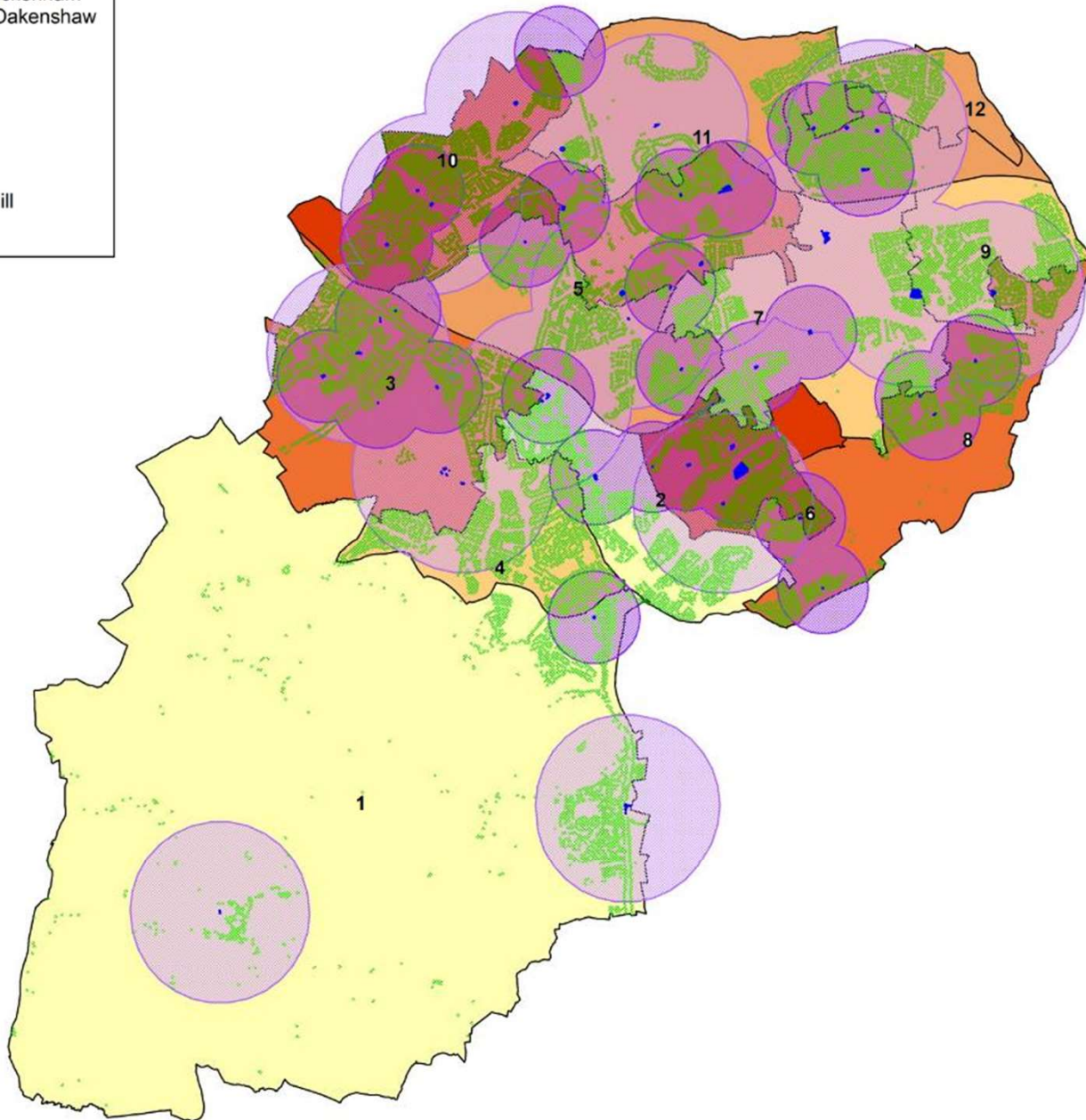
Households in top 20% most health deprived without access to play provision using access model by ward:

Wards	No	%
Matchborough Ward	74	7.9%
Headless Cross and Oakenshaw Ward	58	7.6%
Greenlands Ward	23	0.9%
Batchley & Brockhill Ward	1	0.0%
Winyates Ward	0	0.0%
Central Ward	0	0.0%
Lodge Park Ward	0	0.0%
Church Hill Ward	0	0.0%
Abbey Ward	0	0.0%
Astwood Bank and Feckenham Ward		
Crabbs Cross Ward		
West Ward		

Accessibility Model & Children Under 12

0.5% of households in the top 20% most children aged 12 & under don't have access.

- 1 = Astwood Bank & Feckenham
- 2 = Headless Cross & Oakenshaw
- 3 = West
- 4 = Crabbs Cross
- 5 = Central
- 6 = Greenlands
- 7 = Lodge Park
- 8 = Matchborough
- 9 = Winyates
- 10 = Batchley & Brockhill
- 11 = Abbey
- 12 = Church Hill



Redditch and Bromsgrove Play

Figure 5
Play Provision & Population aged 12 & under quintiles (Buffered @ 400m / 800m)

Legend

- Play Provision
- 400m buffer for local play
- 800m buffer for neighbourhood play
- Residential areas
- Borough & MSOA's Boundaries

Population Aged 12 and Under Quintiles

Highest

- 5
- 4
- 3
- 2
- 1

Lowest

Contains OS data © Crown copyright and database right 2021

Drawn by: GA	Checked by: AS	Date: 14/3/23
-----------------	-------------------	------------------



Analysis



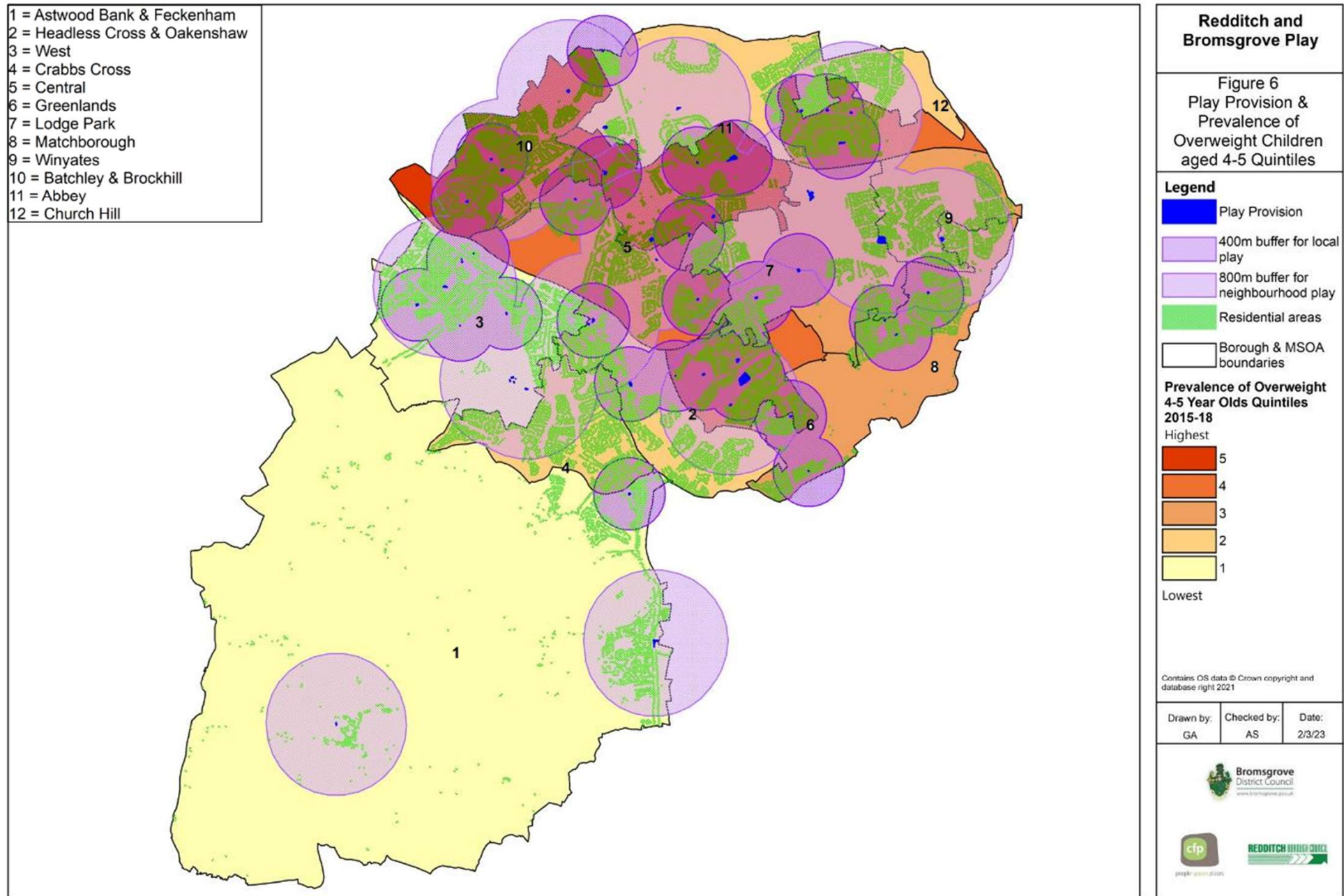
people spaces places

Households in top 20% most children aged 12 & under without access to play provision using access model by ward:

Wards	No	%
Greenlands Ward	39	1.1%
Batchley & Brockhill Ward	1	0.0%
Matchborough Ward		
Headless Cross and Oakenshaw Ward		
Winyates Ward		
Central Ward		
Lodge Park Ward		
Church Hill Ward		
Abbey Ward		
Astwood Bank and Feckenham Ward		
Crabbs Cross Ward		
West Ward		

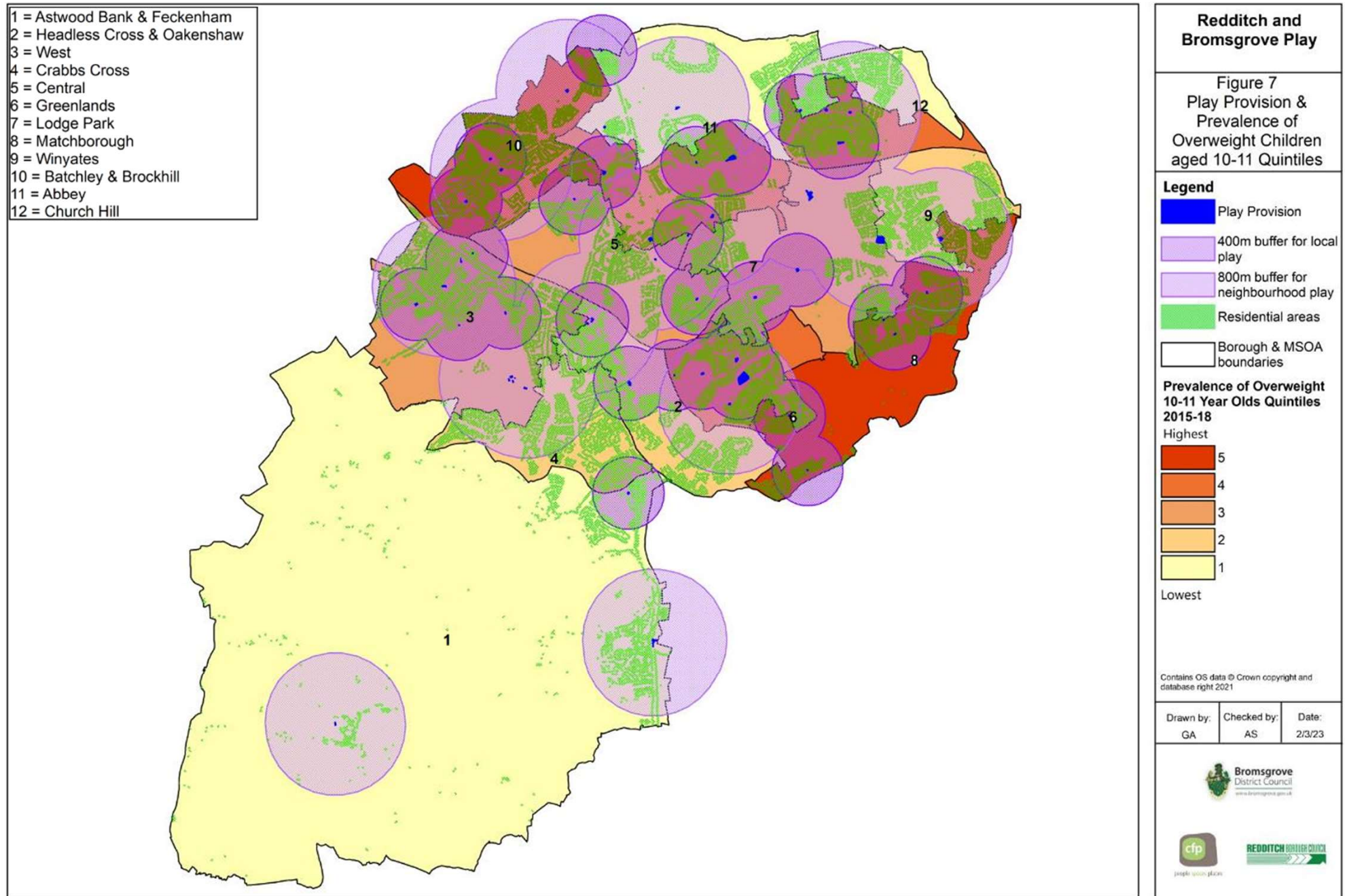
Accessibility Model & Overweight Children

0.0% of households in the top 20% most overweight 4-5 year olds don't have access.



Accessibility Model & Overweight Children

4.7% of households in the top 20% most overweight 10–11-year-olds don't have access.



Analysis



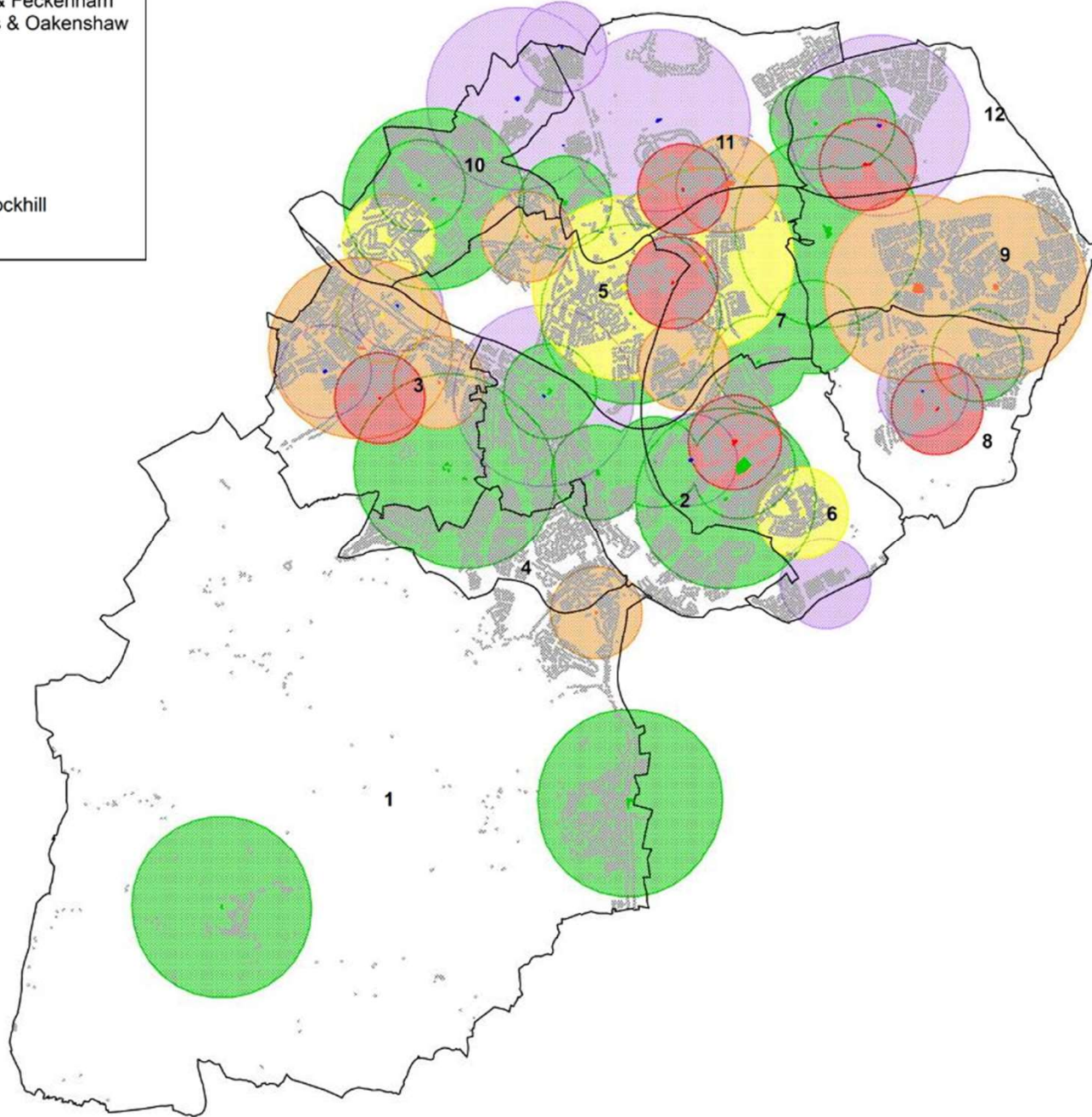
people spaces places

Households in top 20% most overweight 10-11 year olds without access to play provision using access model by ward:

Wards	No	%
Greenlands Ward	123	16.5%
Matchborough Ward	255	10.8%
Winyates Ward	4	0.7%
Batchley & Brockhill Ward	1	0.0%
Headless Cross and Oakenshaw Ward		
Central Ward		
Lodge Park Ward		
Church Hill Ward		
Abbey Ward		
Astwood Bank and Feckenham Ward		
Crabbs Cross Ward		
West Ward		

Play Condition

- 1 = Astwood Bank & Feckenham
- 2 = Headless Cross & Oakenshaw
- 3 = West
- 4 = Crabbs Cross
- 5 = Central
- 6 = Greenlands
- 7 = Lodge Park
- 8 = Matchborough
- 9 = Winyates
- 10 = Batchley & Brockhill
- 11 = Abbey
- 12 = Church Hill



Redditch and Bromsgrove Play

Figure 8
Play Provision with RBC
Rating (Buffered @
400m/800m)

Legend

- Good for 5 years buffer
- Good for 3-5 years buffer
- Good for 1-3 years buffer
- Considered for removal buffer
- Sites without rating buffer
- Residential areas
- Borough & Ward Boundaries

Contains OS data © Crown copyright and database right 2021

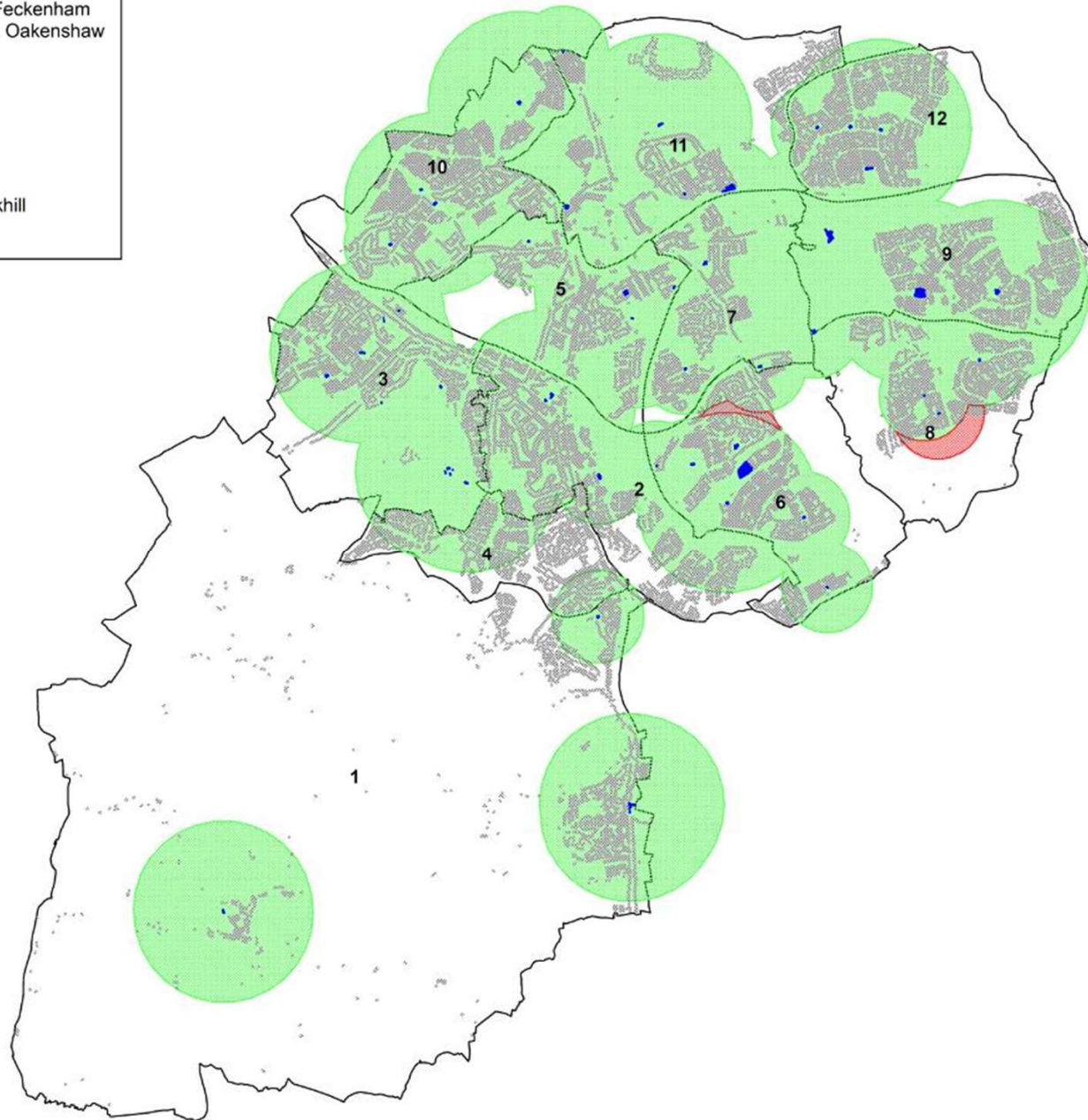
Drawn by:	Checked by:	Date:
GA	AS	14/3/23



Retained vs Removed Play

249 (0.6%) households in Redditch will lose access to play provision.

- 1 = Astwood Bank & Feckenham
- 2 = Headless Cross & Oakenshaw
- 3 = West
- 4 = Crabbs Cross
- 5 = Central
- 6 = Greenlands
- 7 = Lodge Park
- 8 = Matchborough
- 9 = Winyates
- 10 = Batchley & Brockhill
- 11 = Abbey
- 12 = Church Hill



Redditch and Bromsgrove Play

Figure 8a
Retained vs Lost Play
Provision (Minus sites
considered for removal)

Legend

- Play Provision
- Retained sites buffer
- Houses losing provision buffer
- Residential areas
- Borough & Ward Boundaries

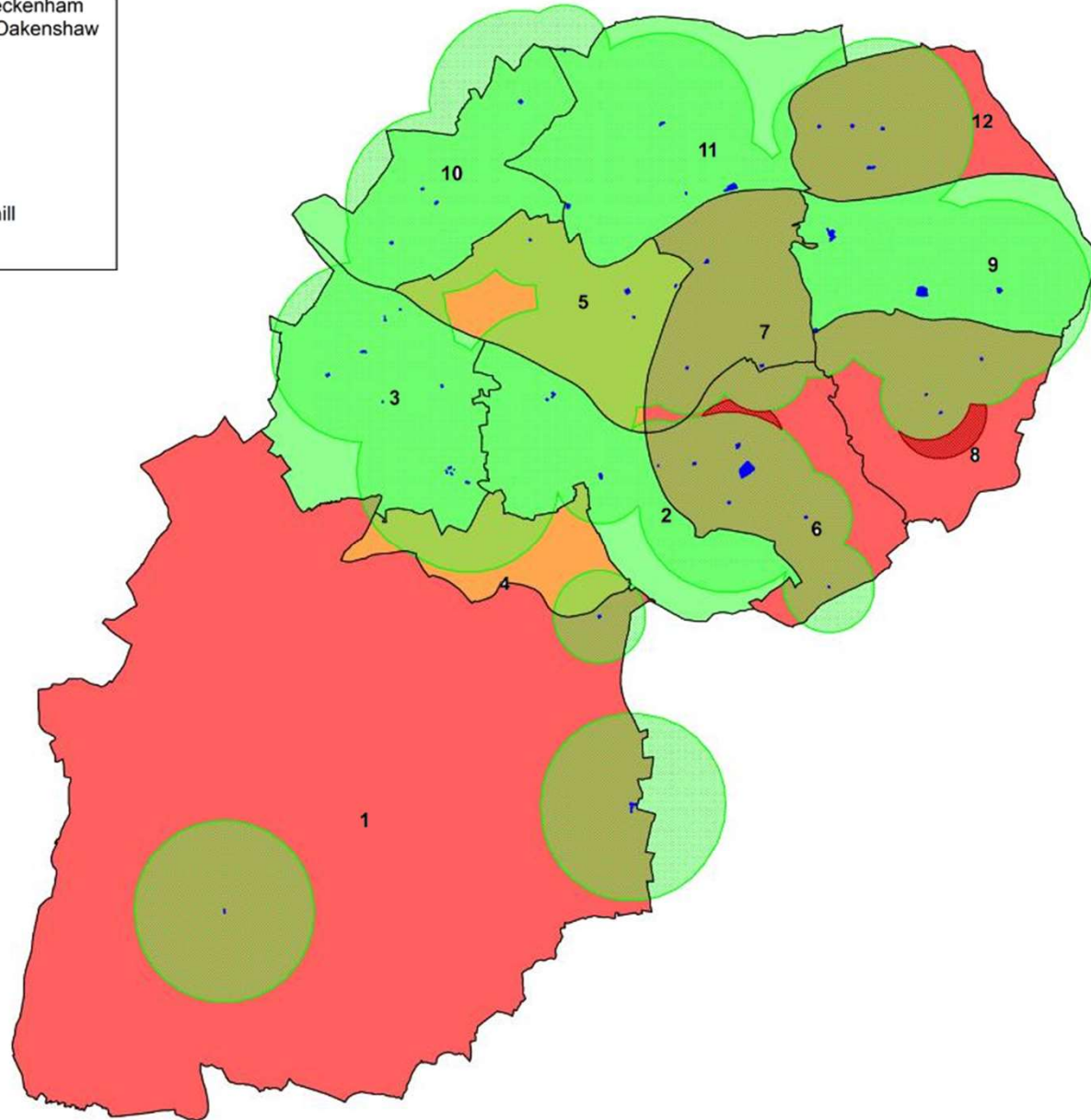
Contains OS data © Crown copyright and database right 2021

Drawn by:	Checked by:	Date:
GA	AS	14/3/23



Removed Play & Resident's Perception of Quantity

- 1 = Astwood Bank & Feckenham
- 2 = Headless Cross & Oakenshaw
- 3 = West
- 4 = Crabbs Cross
- 5 = Central
- 6 = Greenlands
- 7 = Lodge Park
- 8 = Matchborough
- 9 = Winyates
- 10 = Batchley & Brockhill
- 11 = Abbey
- 12 = Church Hill



Redditch and Bromsgrove Play

Figure 8b
Retained vs Lost Play
Provision & Residents
Perception of Quantity

Legend

- Play Provision
- Scores for 'too little' provision**
- Above average score
- Average score
- Below average score
- Retained sites buffer
- Houses losing provision buffer
- Borough & Ward Boundaries

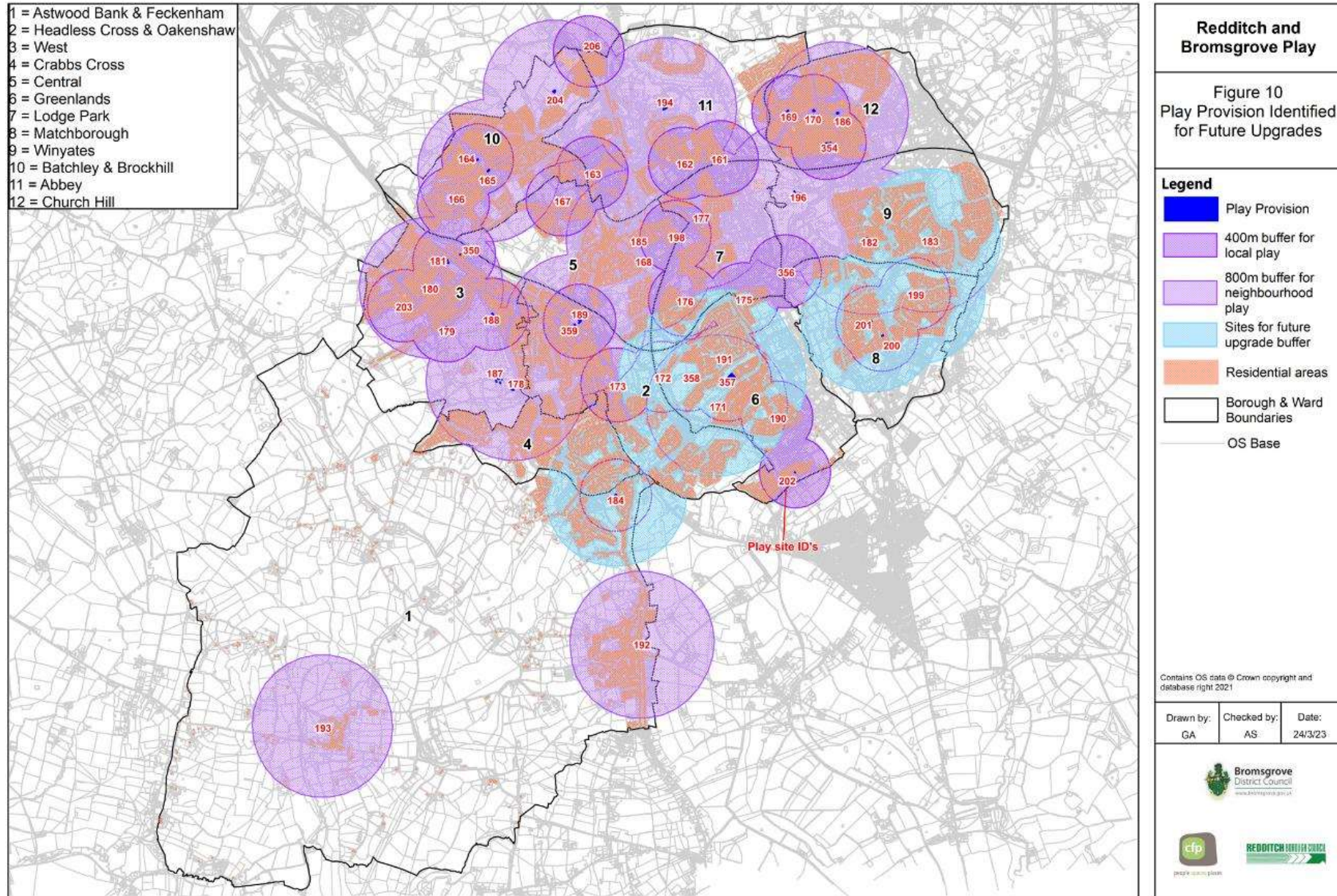
Contains OS data © Crown copyright and database right 2021

Drawn by: GA	Checked by: AS	Date: 14/3/23
-----------------	-------------------	------------------

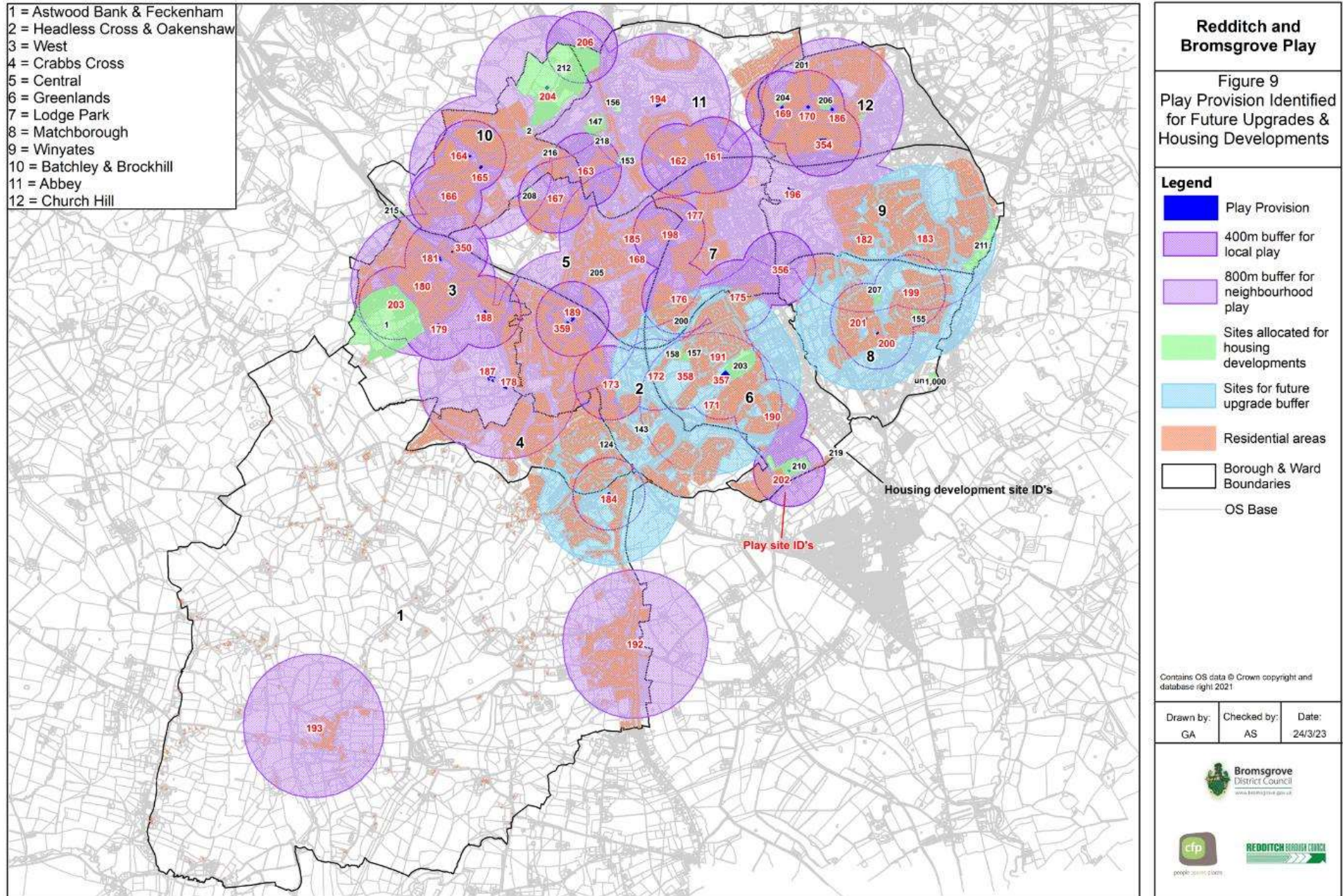


Future upgrades – enhancement of selected local sites to neighbourhood level

Reducing the number of households who don't have access to 4.3%



Opportunities for decreasing deficiencies linked to housing developments



Sites Allocated for Housing Developments



people spaces places

Housing development sites – where no onsite provision of play would be required. The table shows where offsite developer contributions should be directed.

Site ref	Site Name	Play Area ID	Play Area Name
2	Land at Brockhill East	204	Brockhill East
147	Windsor Road Gas Works	194	Forge Mill Play Area
218	RO Windsor Road Gas Works	194	Forge Mill Play Area
153	Prospect Hill	194	Forge Mill Play Area
156	Land at Millfields and the Fire Station	194	Forge Mill Play Area
157	Former Ipsley School playing field	358 / 191 / 172	Greenlands Playing Field* / Throckmorton* / Hedgerows
158	South of scout hut, Oakenshaw Road	358 / 191 / 172	Greenlands Playing Field* / Throckmorton* / Hedgerows
203	Former Dingleside Middle School	171 / 357 / 191	Bengrove* / Dingleside Field* / Throckmorton*
205	Mayfields Works, The Mayfields	168	Mayfields Park
206	Church Hill District Centre	186 / 170	Willow Trees Community Centre / Heronfield Close
208	Widney House, Bromsgrove Road	165	Batchley Gardens Play Area
209	Loxley Close	186	Willow Trees Community Centre
212	Brockhill East	204	Brockhill East
1	Land at Foxlydiate	180 / 203 / 179	Springvale Road / Morville Street / Yeadon Close
216	Former Hewell Road swimming baths	165	Batchley Gardens Play Area
217	Sandycroft, West Avenue	185	Glover Street
218	RO Windsor Road Gas Works	194	Forge Mill Play Area
207	Matchborough District Centre	182 / 199 / 201	Lowlands Lane / Mil Hill* / Matchborough Rocks*
211	A435 (former ADR)	183	Cardington Close*
201	The Hills, Tanhouse Lane	186 / 169 / 170	Northleach Close / Heronfield Close / Willow Trees Community Centre
204	Marlfield Farm School	186 / 169 / 170	Northleach Close / Heronfield Close / Willow Trees Community Centre
210	RO Alexandra Hospital	202	Whetstone Close
200	Land off Wirehill Drive	176	Lodge Pool Drive
155	Former Claybrook First School	199 / 200 / 201	Mil Hill* / Eathorpe Close / Matchborough Rocks*

* - play sites which will reduce deficiency if enhanced from local to neighbourhood. Hence offsite developer contributions should be directed.

Sites Allocated for Housing Developments



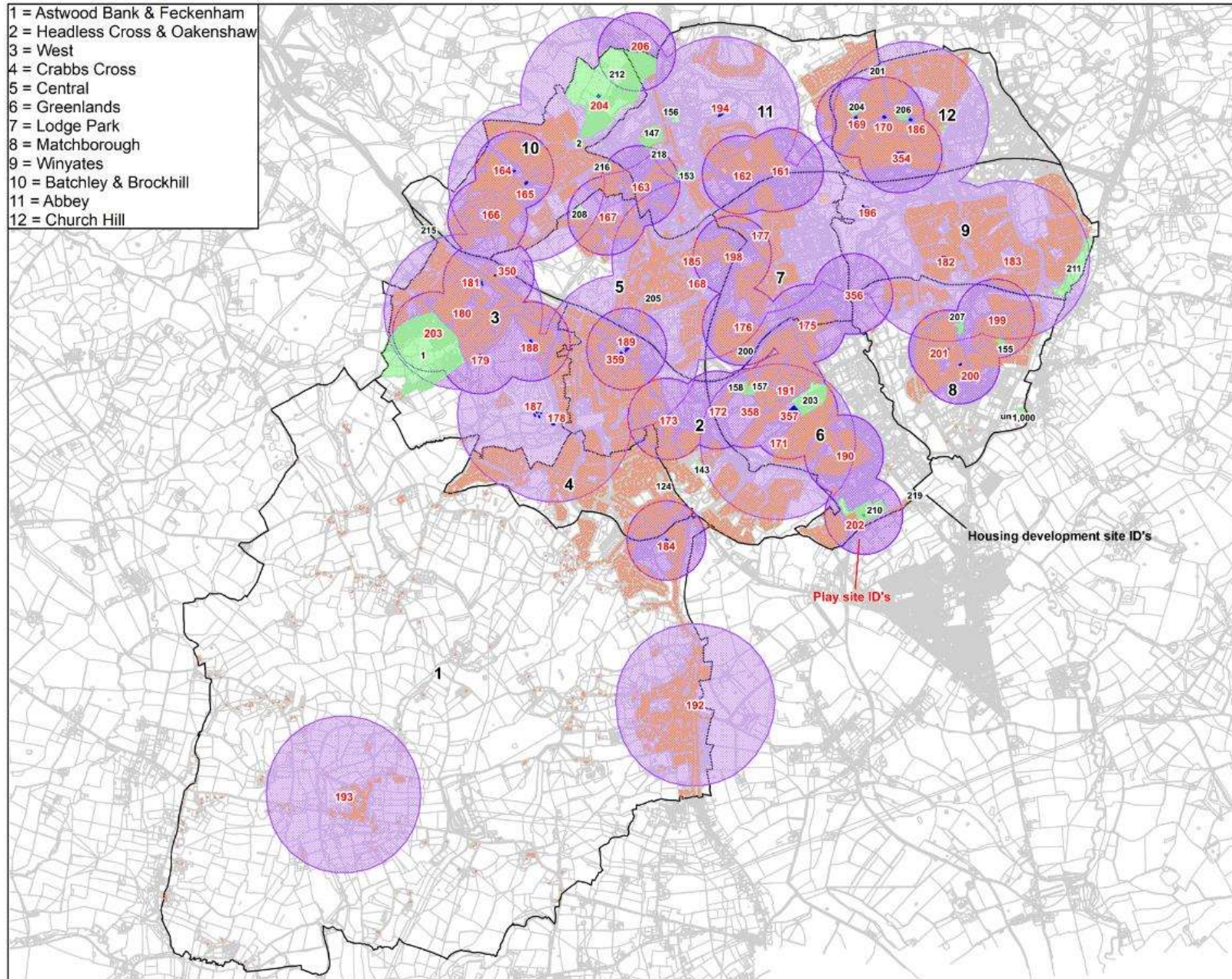
people spaces places

These housing development sites are entirely within or in close proximity to areas of deficiency to play provision. Consideration should be given to onsite provision if feasible, subject to the play facility meeting minimum standards for either local or neighbourhood provision.

Site ref	Site Name
Site 124	Brush Factory, Evesham Road
Site 201	The Hills, Tanhouse Lane
Site 211	A435 (former ADR)
Site 143	Adj. Castleditch Lane/Pheasant Lane

Opportunities for decreasing deficiencies linked to housing developments

- 1 = Astwood Bank & Feckenham
- 2 = Headless Cross & Oakenshaw
- 3 = West
- 4 = Crabbs Cross
- 5 = Central
- 6 = Greenlands
- 7 = Lodge Park
- 8 = Matchborough
- 9 = Winyates
- 10 = Batchley & Brockhill
- 11 = Abbey
- 12 = Church Hill



Redditch and Bromsgrove Play

Figure 11
Current Play Provision & Housing Developments

Legend

- Play Provision
- 400m buffer for local play
- 800m buffer for neighbourhood play
- Sites allocated for housing developments
- Residential areas
- Borough & Ward Boundaries
- OS Base

Contains OS data © Crown copyright and database right 2021

Drawn by: GA	Checked by: AS	Date: 24/3/23
-----------------	-------------------	------------------

Summary – Current Accessibility



people spaces places

- The development of the accessibility model has helped to identify areas of deficiency to play provision.
- The most significant gaps are in areas to the South of Redditch Town, namely Crabbs Cross, Headless Cross & Oakenshaw and the North of Astwood Bank and Feckenham.
- The accessibility model overlayed on deprivation and demographic data has helped to identify where there are areas of deficiency to play, as well as:
 - High levels of deprivation and health deprivation.
 - Large populations of children 12 & under.
 - Large populations of overweight children.
- Matchborough Ward to the East of Redditch Town is highlighted as having slight deficiencies in areas with higher levels of deprivation and a larger population of overweight 10-11 year olds.
- Greenlands Ward is also highlighted as having slight deficiencies in areas with higher levels of deprivation, and a larger population of both children aged under 12 and overweight children aged between 10-11.

Summary – Opportunities to Address Deficiencies



people spaces places

Opportunities to upgrade from local to neighbourhood provision

The access model is based around the hierarchy of each play space. Play sites that have a greater range or higher quality provision have been classified as neighbourhood level provision and serve a wider area than local level provision. By upgrading the range of play equipment and the quality of provision the gaps in play accessibility can be reduced.

The following play sites have been identified by RBC as sites which have the potential to be upgraded from local to neighbourhood provision in the future.

- Site 358 - Greenlands Playing Field – Greenlands Ward
- Site 357- Dingleside Field - Greenlands Ward
- Site 201 - Matchborough Rocks – Matchborough Ward
- Site 199 - Mil hill - Matchborough Ward
- Site 191- Throckmorton - Greenlands Ward
- Site 184 - Banners Lane - Astwood Bank and Feckenham Ward
- Site 183 - Cardington Close - Winyates Ward
- Site 171 – Bengrove - Greenlands Ward

Summary – Opportunities to Address Deficiencies



people spaces places

- Investment in the sites should be considered if feasible, and doing so would decrease deficiencies for Crabbs Cross, Headless Cross & Oakenshaw, Greenlands and Matchborough ward.
- Banners Lane is classified as 'good for 3 years or less'. Therefore this should be prioritised for more urgent action (in the next two years) compared to the sites that are good for 5+ years.

Summary – Opportunities to Address Deficiencies



people spaces places

Opportunities through Housing Development

- Opportunities to decrease deficiencies through sites allocated for housing developments have also been considered, where funding could be used to enhance existing play or create new play provision within the development.
- Housing developments which lie within or in close proximity to areas of deficiency have been identified, namely for Crabbs Cross, Headless Cross & Oakenshaw, Winyates and Churchill Ward.
- Future play provision linked to the housing developments identified should be considered if feasible, and as long as it meets the minimum requirements for local or neighbourhood provision.

Case Study – Abbey Ward



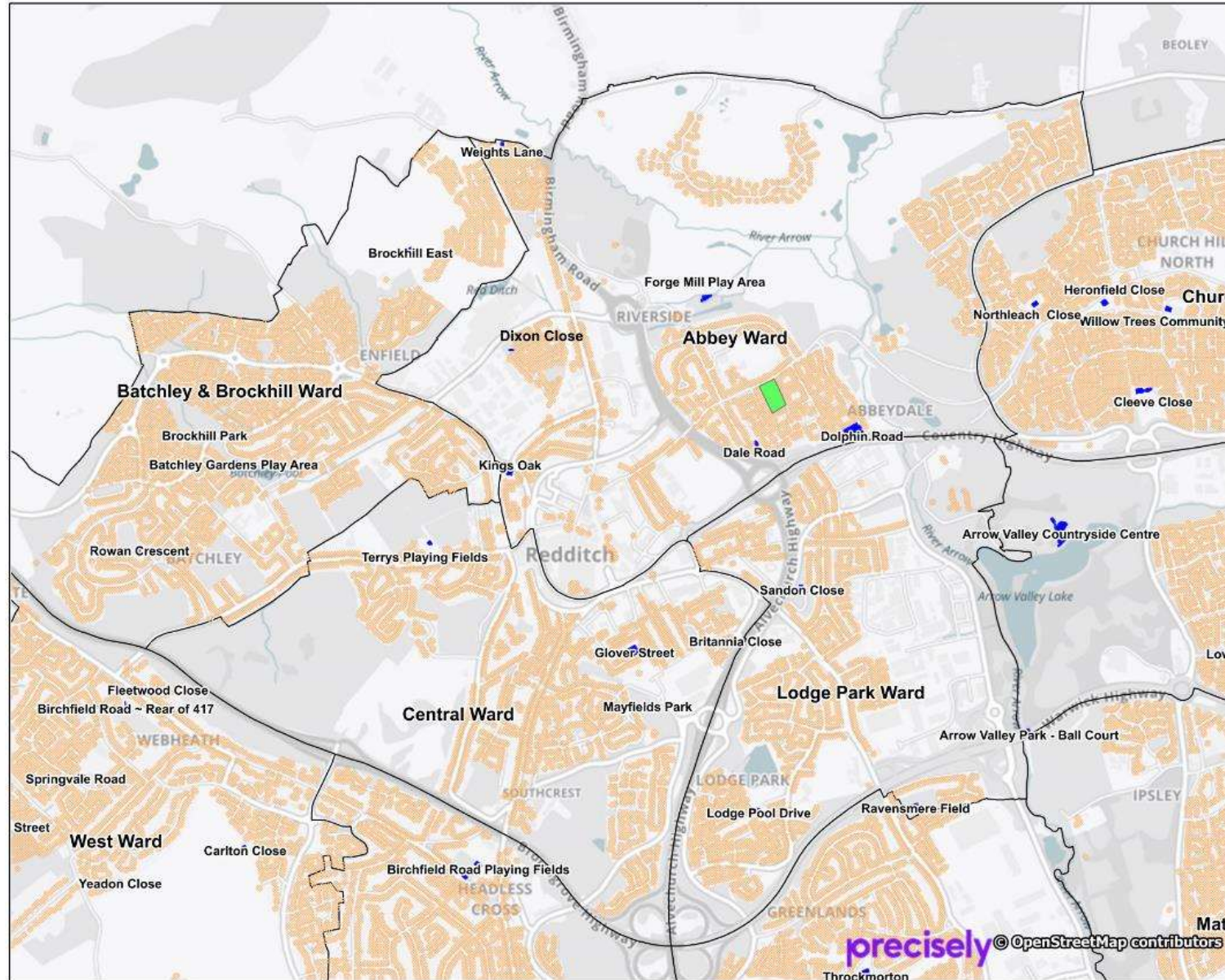
people spaces places

What would be the scope and potential impact of removing play provision at any of the existing play spaces in Abbey Ward and relocating in Abbeydale Park?

Introduction



people spaces places



Redditch and Bromsgrove Play

Figure 1
Play Provision

Contains OS data © Crown copyright and database right 2021

Drawn by:	Checked by:	Date:
GA	AS	18/4/23

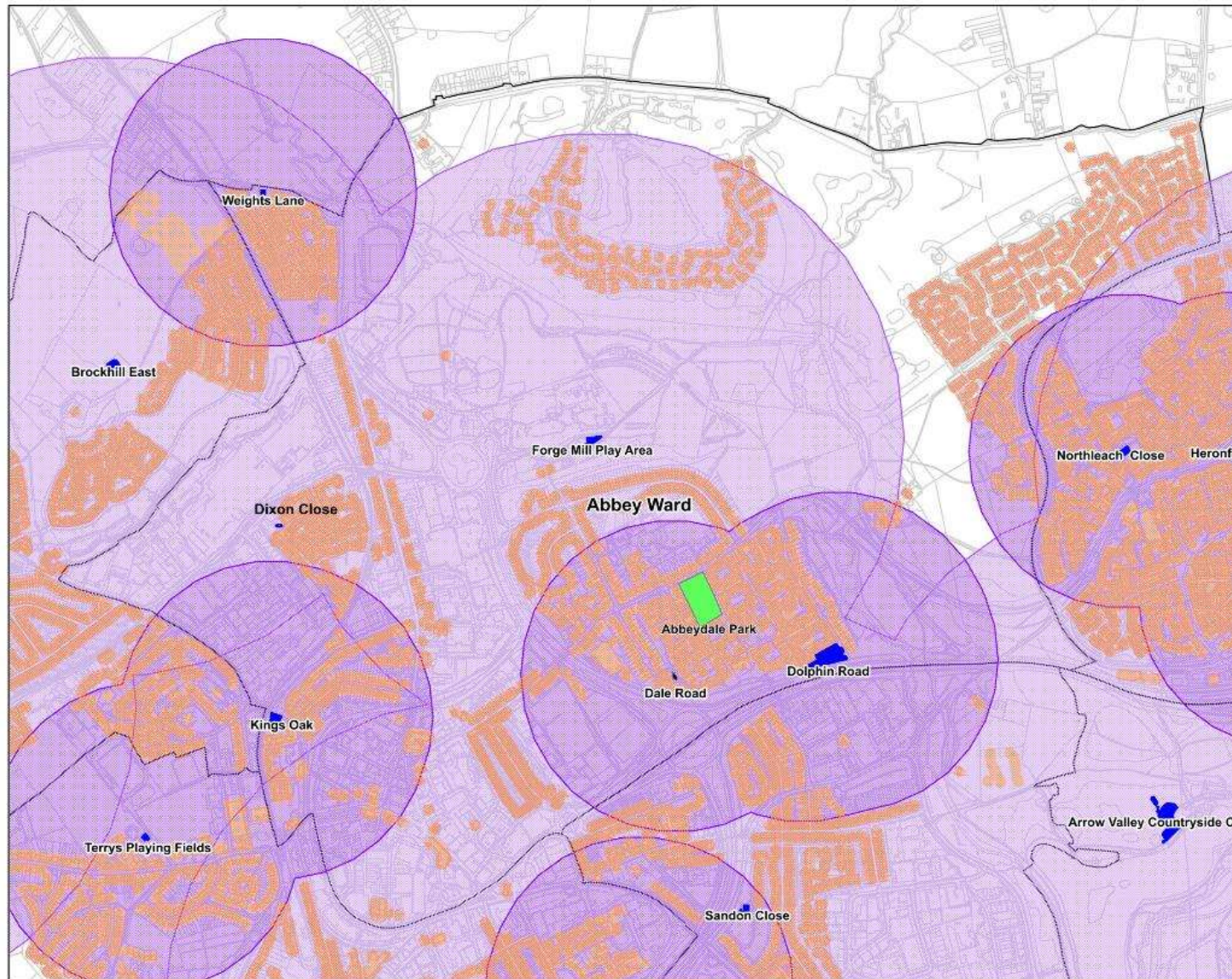


precisely © OpenStreetMap contributors

Current Accessibility



people spaces places



Redditch and Bromsgrove Play


Figure 2
Play Provision & Access Model



Legend

- Play Provision
- 400m buffer for local play
- 800m buffer for neighbourhood play
- Residential areas
- Borough & Ward Boundaries
- OS Base

Contains OS data © Crown copyright and database right 2021

Drawn by: GA	Checked by: AS	Date: 27/4/23
-----------------	-------------------	------------------

 Bromsgrove District Council
www.bromsgrove.gov.uk

Quantity



people spaces places

Ward	Provision for Children	Provision for Teenagers / Young People
Abbey	0.070	0.014
Astwood Bank and Feckenham	0.034	0.022
Batchley & Brockhill	0.013	0.003
Central	0.028	0.019
Church Hill	0.016	0.006
Crabbs Cross	0.000	0.000
Greenlands	0.020	0.014
Headless Cross and Oakenshaw	0.021	0.021
Lodge Park	0.050	0.036
Matchborough	0.010	0.010
West	0.046	0.013
Winyates	0.134	0.134
Total	0.037	0.025

- Abbey Ward has above average levels of provision for children's play.
- There is insufficient provision for teenagers & young people

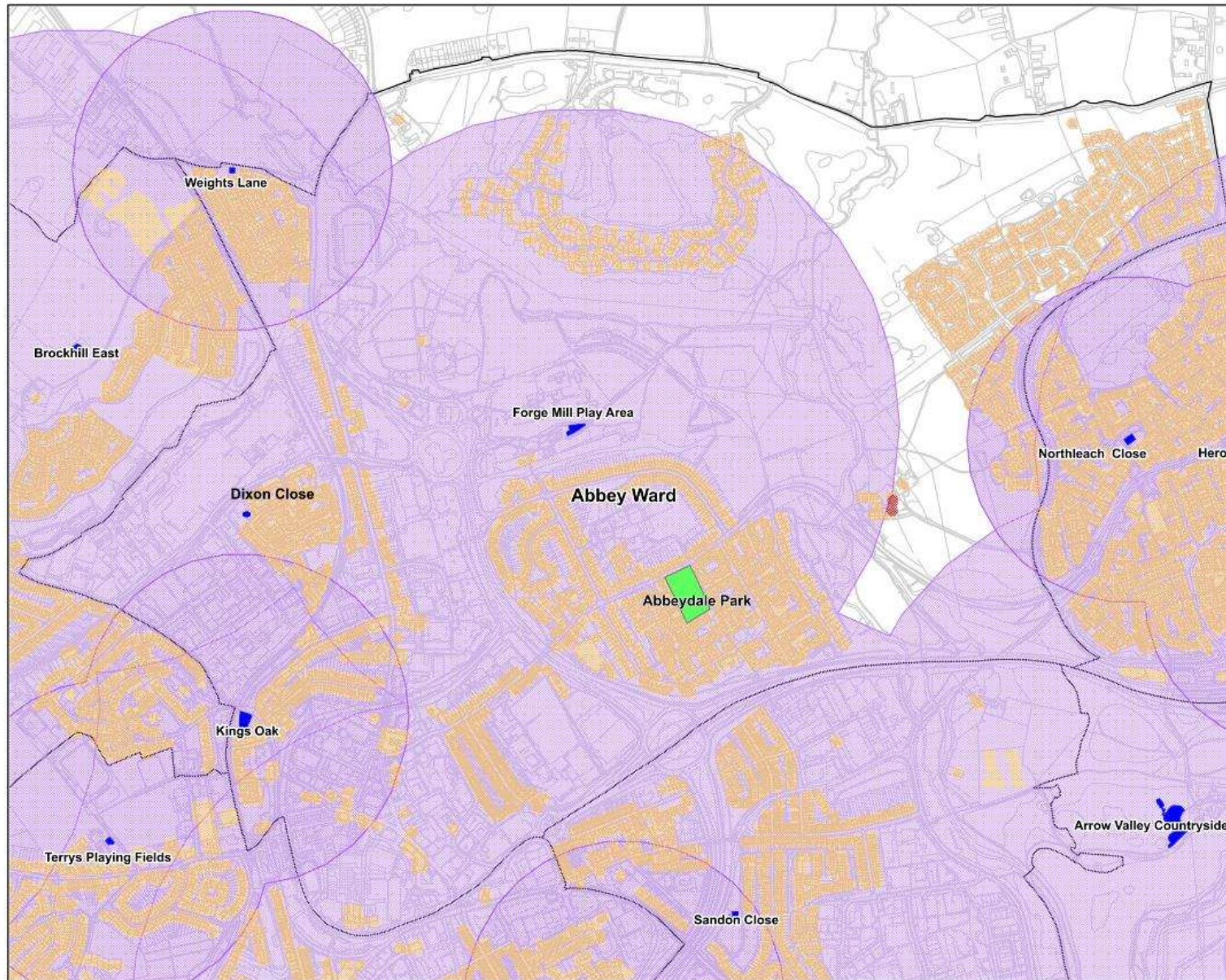
Source : Redditch Open Space Standards 2022



Impact of Removal



people spaces places



Redditch and Bromsgrove Play

Figure 3
Play Provision minus
Dale Road & Dolphin
Road

Contains OS data © Crown copyright and
database right 2021

Drawn by:	Checked by:	Date:
GA	AS	27/4/23



Analysis



people spaces places

Site Ref	Site Name	No. of houses that will lose access if site is removed	% of houses that will lose access if site is removed	Total % of houses in Abbey Ward that would be without access if removed	RBC Rating
162	Dale Road	0	0.0%	10.0%	Site identified by RBC for potential removal
161	Dolphin Road	2	0.1%	10.1%	Good for 1-3 years

Site 162 – Dale Road in Abbey Ward could be removed without affecting the overall level of access (and has been identified by RBC for potential removal)

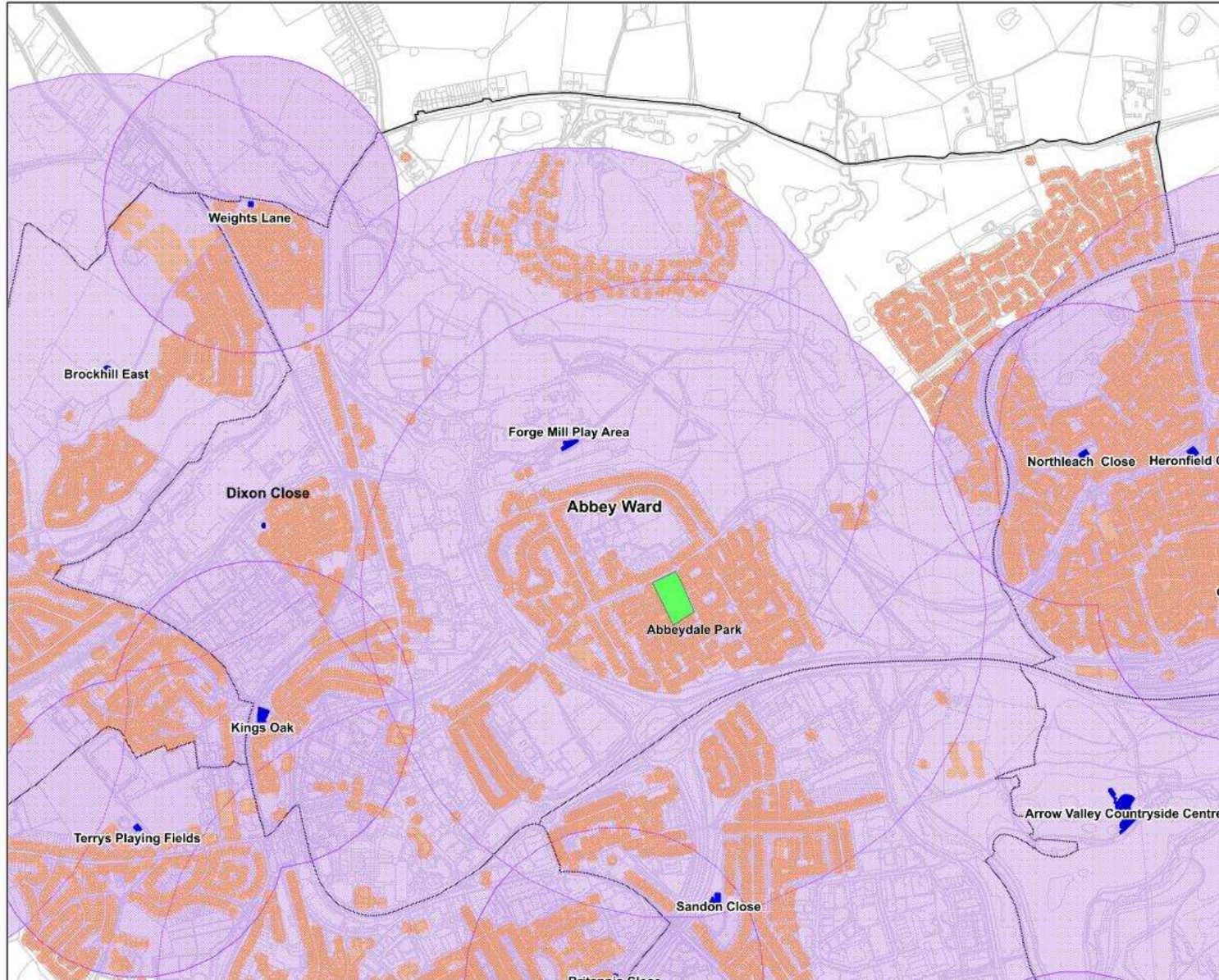
Removal of Site 161 - Dolphin Road could also be moved with minimal impact on the local accessibility of play provision within Abbey Ward (affect 2 households only).

Combined with investment at 242 Abbeydale Playing Fields to create a new Neighbourhood play space there would be a net improvement in the accessibility and quality of play provision in Abbey Ward. More details on the next slide.

Impact of Investment in Abbeydale Park



people spaces places



Redditch and Bromsgrove Play

Figure 4
Abbeydale Park
Buffered @ 800m

Contains OS data © Crown copyright and database right 2021

Drawn by:	Checked by:	Date:
GA	AS	27/4/23



Bromsgrove
District Council
www.bromsgrove.gov.uk



people spaces places